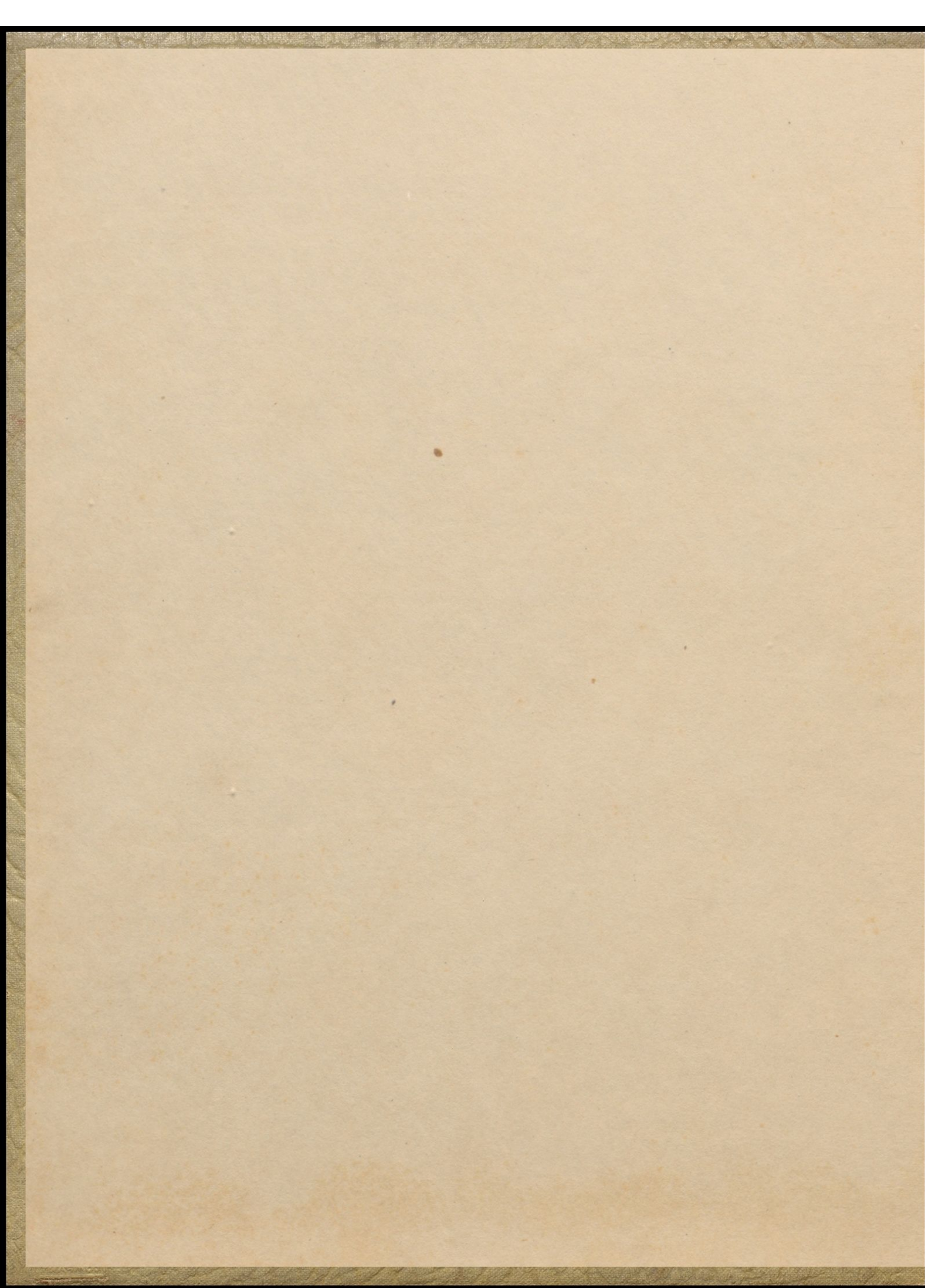
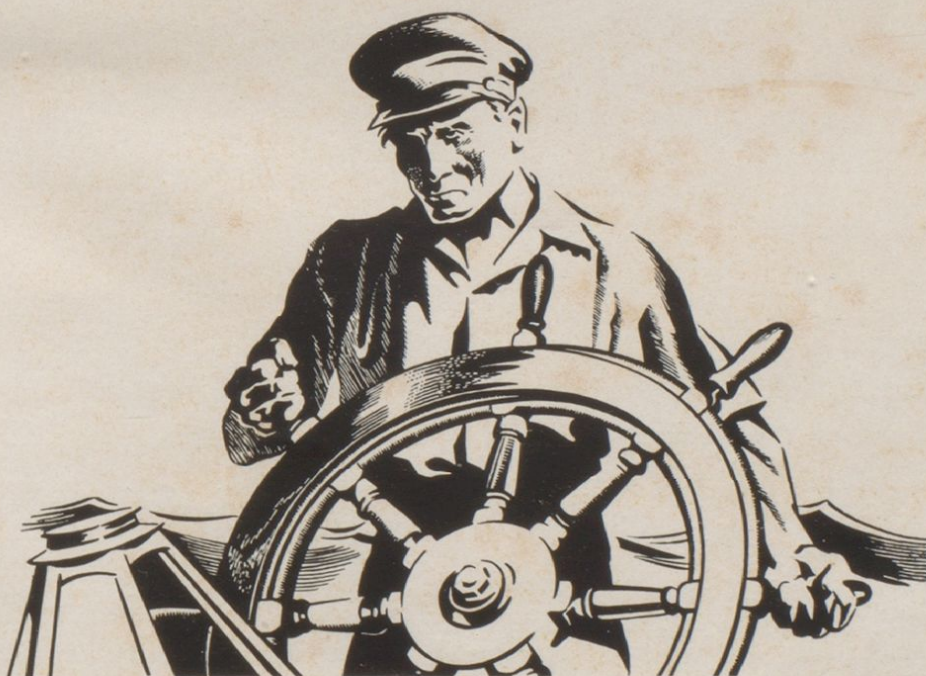


REVILONIAN



1 9 4 6





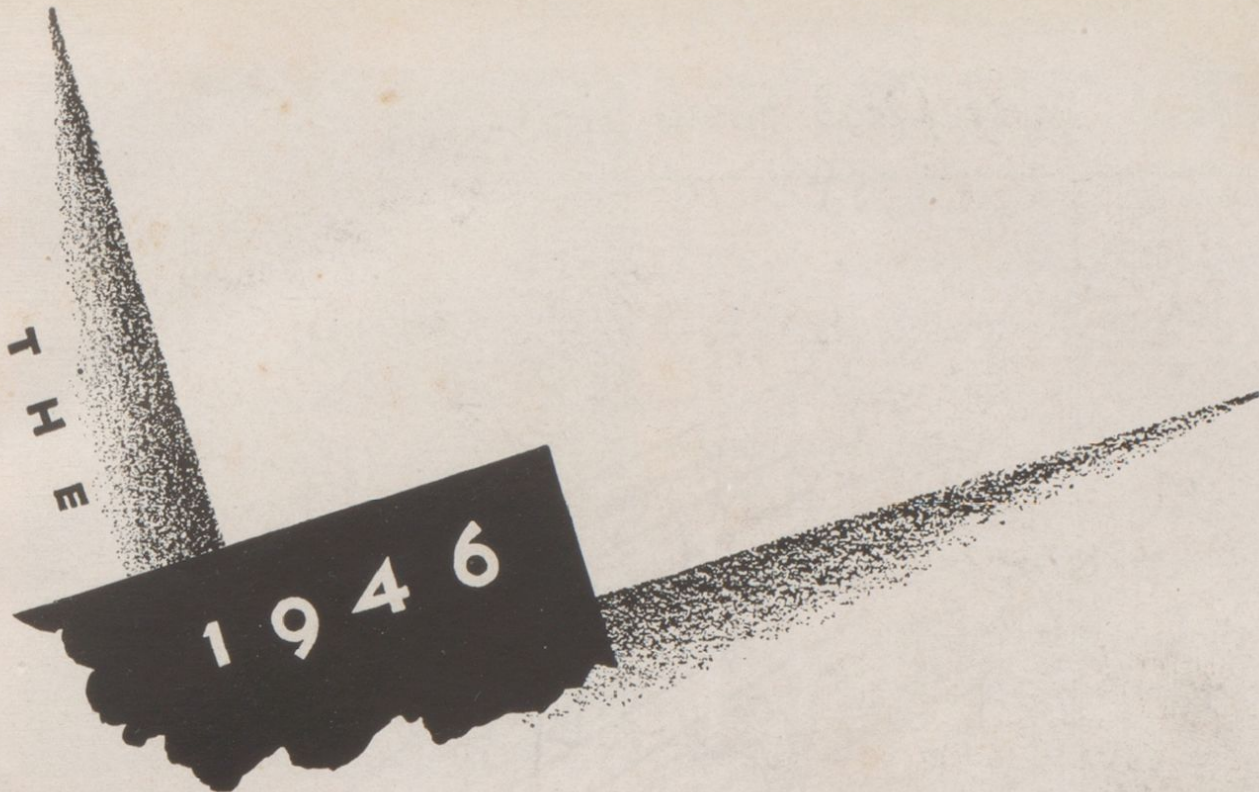
EX LIBRIS



School

The year 1945 Germany capitulates Japan is
 crushed The Atomic Age is born World War II
 ends Whistles blow Church bells ring
 Our boys come home Families reunited The Four
 Freedoms ring out for every race and nation The world grows
 smaller.

With these thoughts in mind, we must think of the grave responsibilities
 which lie ahead in maintaining a just and lasting peace. Most of our problems
 can be solved if we work together, cooperatively, to build a world order based
 on justice and freedom. Through education, we're laying the foundation for
 this world of free men—the world of the future. Russell High School is one
 of the many schools at work for Lasting Victory.

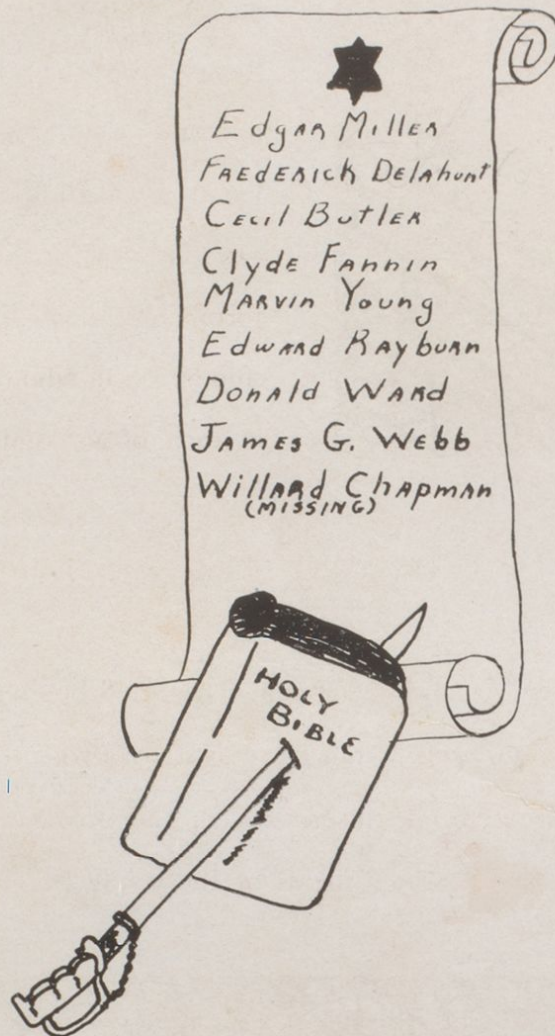


REVILONIAN



RUSSELL HIGH SCHOOL
Russell, Kentucky

That These Dead Shall Not Have Died In Vain



TO THE BOYS FROM RUSSELL HIGH SCHOOL
WHO WENT FROM CLASSROOM TO WAR;
AND TO THOSE WHO, HAVING GIVEN THEIR LIVES,
WILL NEVER RETURN;
THIS REVILONIAN . . . IN HUMBLE GRATITUDE
IS DEDICATED.



argued
**PRINCIPAL and
 SECRETARY**

A typical scene at the office. Mr. Evans is seated at his desk, while our attractive office secretary, Miss Margaret Carmichael, is answering the telephone. Mr. Evans' leadership has set high standards and established wonderful ideals in the hearts of every student at Russell High. We are fortunate, indeed, to be under the leadership of a man who takes a personal interest in each of us, and all school activities.

S
U
P
T.

Here you see Mr. B. F. Coffman, Supt. of Schools, giving instructions to his efficient secretary, Miss Sarah Hendricks. We wish to express deep appreciation and gratitude to our Superintendent and Board of Education for seeing and fulfilling the educational needs of the young people of this community.

A
N
D

S
E
C
R
E
T
A
R
Y





Faculty



Numia Lee Fouts



Pauline P. Wade

HENRY R. EVANS
B.S. Morehead
M.S., U. of Ky.
Principal

R. F. DAVIS
A.B., U. of Ky.
History and Biology
Ass't Principal

NUMIA LEE FOUTS
A.B., U. of Ky.
B.S. in L.S., U. of Ill.
Librarian and Sr. Advisor

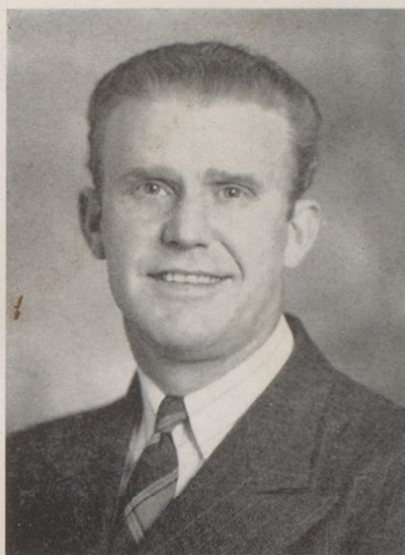
MRS. DON FARMER
A. B., Woman's College
U. of N. C.
Mathematics

MARY WASHINGTON
B.S., Eastern
English
Chemistry and Sr. Advisor

MRS. E. K. WADE
A.B., U. of Ohio
Commerce



Faculty



VENNIE CAUDILL
B.S., Morehead
Industrial Arts
Public Speaking

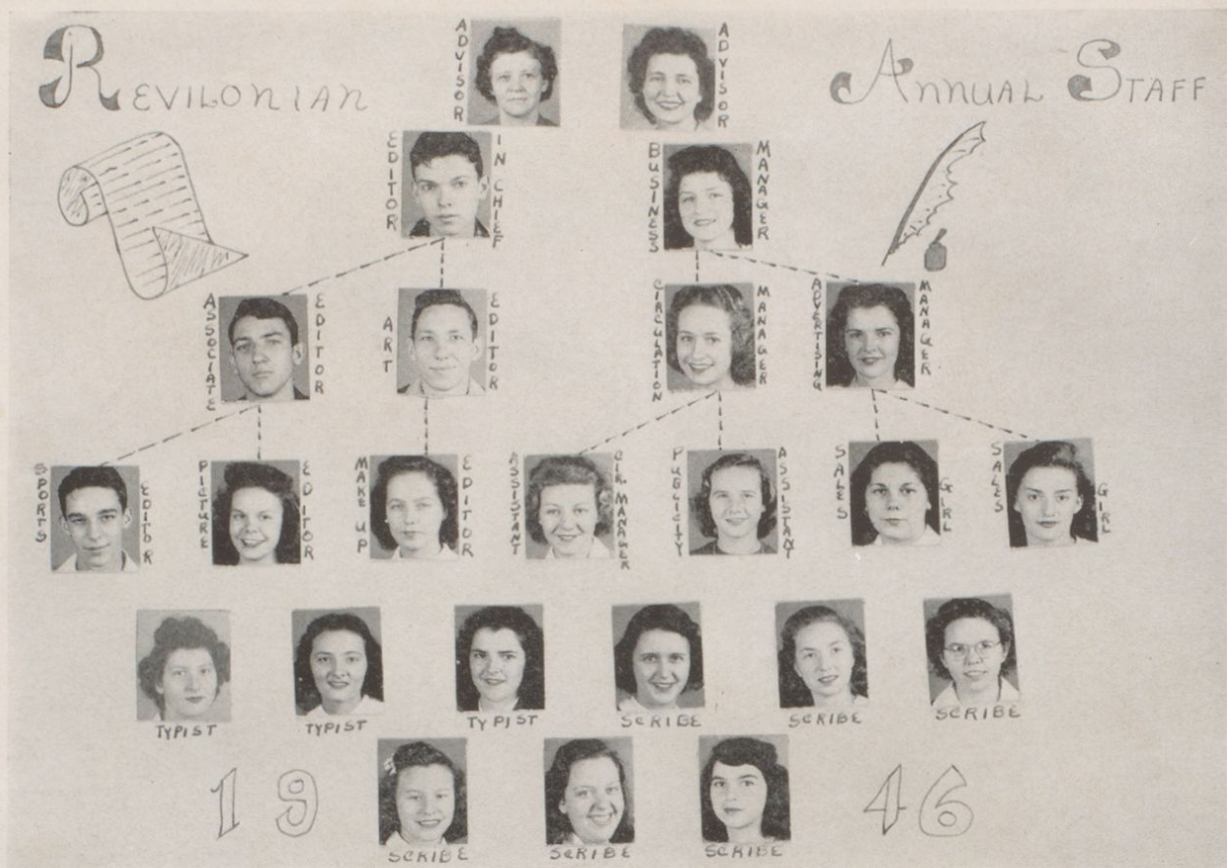
EDYTH YOAK
A.B., Morris Harvey
English and Latin

WILLIAM McDOWELL
A.B., B.C.S.,
Bowling Green
Commerce

THELMA DELL SHARP
B.S., U. of Ky.
Home Economics

E. M. TYLER
B.S., Western
Coach and General Business

EDITH FULLER
B.S., U. of Ky.
Music



The Revilonian Staff

The staff and advisors have worked hard to make this the best yearbook in the history of Russell High School. The *Revilonian* was published to record our activities and achievements, and we hope it will prove an inspiration and guidance to all future graduating classes of Russell High School. May this 1946 *Revilonian* become one of your most cherished possessions, recalling pleasant memories and happy associations of the past four years.

CONTENTS

FACULTY

GRADUATES

FAVORITES

UNDERGRADS

ATHLETICS

ADS



C L A S S E S

SENIORS



HOMER ADKINS

Hi-Y Club 2, 3, 4; Bible Study 1, 2, 3, 4; Camera Club 4.



ALMA AMIS

Bible Study 1, 2, 3, 4; Girl Reserves 4.



TONY LOU BASENBACK

Pres. Girl Reserves 4; Glee Club 1, 2, 3, 4; Sec'y-Treas. Glee Club 4; Beta Club 4; Mixed Chorus 4, Trio 3, 4; Cheerleader 2, 3, 4; *Revilonian* Staff; Sr. Play; Jr. Play; Bible Study 3, 4.



FRANCES ANN BENNETT

Glee Club 1; Girl Reserves 4; Bible Study 4; Home Ec 4.



MILDRED BROWN

Glee Club 3, 4; Attendant to Prom Queen 3; Girl Reserves 4; Camera Club 4; Bible Study 1, 2, 3, 4; *Revilonian* Staff.



PHYLLIS JEANNE BROWN

Girl Reserves 4; Beta Club 3, 4; Bible Study 2, 3.



FRANCIS "SLEEPY" BYRNE

Bible Study 2, 3, 4; Hi-Y 2, 3, 4; Science Club 4; Senior Play.



FREDA CALLIHAN

Bible Study 1, 2, 3, 4; Girl Reserves 4.



EVELYN CARPENTER

Mixed Chorus 2; Bible Study 4; Girl Reserves 4.



CARL CHAPMAN

Bible Study 2, 3, 4.

SENIORS

MILDRED CLARKE

Bible Study 2, 3,; 4-H Club; Girl Reserves 3.

OPAL JANE COLE

Girl Reserves 3, 4; Home Ec Club 4.

GAIL COLLINS

Manager football and basketball 1, 2, 3, 4; Hi-Y 4; Jr. Play:
Sr. Play; Bible Study 4.

MARY CRAWFORD

Bible Study 1; Student Congress 2; 4-H Club 2.

BOB CUNNINGHAM

Hi-Y 4; Science Club; Navy 1941-1945, Chief Petty Officer.

BEULAH DARBY

Camera Club 4; Girl Reserves 4.

ELLA MAE DEAN

Glee Club 3; Girl Reserves 4.

JUANITA DINGUS

Dramatic Club 2; Glee Club 3, 4; Mixed Chorus 4; Girl
Reserves 4; Bible Study 1, 2; Sec. and Treas. of Camera
Club 4.

VIRGINIA LEE DONEHOO

Band 1, 2, 3; Glee Club 4; Science Club 4; Girl Reserves 4;
Bible Study 3, 4; Beta Club 4.

BILL DUFF

Dramatic Club 2; Bible Study 2; Science Club 4; Mixed
Chorus 4.



SENIORS



VIRGINIA FERGUSON

Band 3, 4; Beta Club 4; Dramatic Club 3; Bible Study 3; Jr. Play.

CHRISTYNA FOSSON

Glee Club 3, Pres. 4; Mixed Chorus 4; Girl Reserves 4; Camera Club Pres. 4; Bible Study 4; Basketball Queen; Valentine Queen 4; Glee Club 4; Class Sec'y 4.



RUTH DARLENE FOSSON

Glee Club 2, 3, 4; Camera Club 4; Girl Reserves 4; Vice Pres. Bible Study; Dramatic Club 2; *Revilonian* Staff.

JULIUS "JUDY" FOUTS

Pres. of Sr. Class; Editor of *Revilonian*; Sr. Play; Jr. Play; Beta Club 3, 4; Hi-Y 3, 4; Bible Study 4; Sec'y-Treas. Science Club; Student Congress 2; Mixed Chorus 4.



ORILLA FRALEY

Student Congress 3; Bible Study 2, 3; Treas. Beta Club 3; Sec'y Beta Club 4; Girl Reserves 4; *Revilonian* Staff.

GENE FRANZ

Football 1, 2, 3, 4; Basketball 1, 2, 3, 4; Ro Club 2, 3; Hi-Y 3; Athletic Club 3; Science Club 3; Army Air Corps '42-45, 2nd Lieut.



MAXINE GAMBILL

Bible Study 2; Girl Reserves 4; Beta Club 4.

HANNAH GILLEY

Bible Study 1, 2, 3, 4; Girl Reserves 2.



LORETTA GILLIAM

Glee Club 3, 4; Dramatic Club 3; Camera Club 4; Girl Reserves 4; Jr. Play.

DALLAS GILLUM

Vice-Pres. Senior Class; Assoc. Editor *Revilonian*; Beta Club 3, 4; Vice-Pres. Beta Club 4; Hi-Y 2, 3, 4; Bible Study 4; Sr. Play; Jr. Play; Pres. of Science Club.

SENIORS

BETTY JEAN HANEY

Glee Club 4; 4-H Club; Journalism.

ILEEN HARRIS

Glee Club 2, 3, 4; Mixed Chorus 4; Trios 3, 4; Beta Club 4; Girl Reserves 4; Bible Study 4; Sec'y of Student Congress; Class Sec'y 2, 3; Prom Queen attendant; *Revilonian* Staff.

ERNESTINE HOFFMAN

Glee Club 1, 2, 3, 4; Mixed Chorus 2, 3, 4; Trios 3, 4; Mixed Quartet 3; Dramatic Club 2; Girl Reserves 3, 4; Majorette 2, 3, 4; Bible Study 3, 4; Prom Queen Attendant.

BERTHA JUSTICE

Bible Study 1, 2, 3, 4; Girl Reserves 1, 4.

BERNICE JOHNSON

Glee Club 3, 4; Mixed Chorus 4; Camera Club 4; Girl Reserves 3, 4; Bible Study 3, 4; Dramatic Club 2; Library Club 2.

BOB KIMBRELL

Beta Club 3; Treas. of Beta Club 4; Hi-Y 2, 3, 4; Science Club 4; Bible Study 2, 3, 4; Band 3; Jr. Play; Sr. Play.

FRANCES "KORKY" KOUNS

Dramatic Club 2, 3; Jr. Play; Sr. Play; Girl Reserves 4; Bible Study 4; *Revilonian* Staff.

JOHN KOUNS

Hi-Y Club 3, 4; Bible Study 2, 3, 4.

CATHERINE LECLER

Girl Reserves 3, 4; Bible Study 3, 4.

DANNY LEROY

Revilonian Staff; Sr. Class Treas. 4; Jr. Class Pres. 3; Basketball 1, 2, 3, Captain 4; Football 1, 2; Student Congress Vice-Pres. 3; Camera Club Vice-Pres. 4; Mixed Chorus 2, 4.



SENIORS



DOLORES LOWE

Band 1, 2, 3, 4; Home Ec. 4; Beta Club 4; Girl Reserves 4; Bible Study 4.

PATTY PERRY MCKENZIE

Girl Reserves 2; Glee Club 2, 3, 4; Mixed Chorus 2, 3, 4; Trio 2, 3, 4; Bible Study 4.



CLYDE McLAUGHLIN

Football 1, 2, 3, 4; Basketball 2, 3, 4; Hi-Y 4; Bible Study 4.

ANN MALLORY

Beta Club 4; Band 3, 4; Girl Reserves 4; Bible Study 3, 4; Home Ec 2.



JANICE MARSHALL

Dramatic Club 2; Glee Club 2, 3, 4; Mixed Chorus 2, 3, 4; Beta Club 4; Girl Reserves 4; *Revilonian* Staff; Sr. Play; Bible Study 2, 3, 4; Trios 4.

ALMA JEAN MASSIE

Girl Reserves 4; Bible Study 4.



GLEN MENSHOUSE

Football 4; Basketball 2, 3, 4; Jr. Play.

KATHERINE MERRITT



LOIS MILLER

Bible Study 3; Glee Club 2, 3.

RUTH MILLIS

Dramatic Club 2; Trios 2, 3, 4; Mixed Chorus 2, 3, 4; Girl Reserves 1, 4; Debate Club 4; Jr. Play.

SENIORS

DORIS MULLINS

Revilonian Staff; Girl Reserves 1, 4; Camera Club 4; Home Ec. 2, 3, 4; Dramatic Club 2.

RUTH MULLINS

Revilonian Staff; Girl Reserves 1, 4; Camera Club 4; Bible Study 1, 3, 4; Dramatic Club 2.

HELEN MULLINS

Dramatic Club 2; Girl Reserves 1, 4; Camera Club 4; Bible Study 1, 3, 4; *Revilonian* Staff; Home Ec. 2, 3, 4.

WANDA NOE

Bible Study 2, 4; Beta Club 4; Girl Reserves 1, 4.

GEORGE OSBORNE

Conservation Club 4; Hi-Y Club 4.

IMOGENE PERKINS

Girl Reserves 4; Camera Club 4; Jr. Red Cross.

JOE PORTER

Football 4; Camera Club 4; Student Congress 4; Hi-Y 4; Jr. Conservation Club; Bible Study 4.

CAROLYN PRICE

Mixed Chorus 2, 3, 4; Trio 4; Quartet 3; Girl Reserves 1, 4; Dramatic Club 2; Beta Club 2; Beta Pres. 4; Student Congress 3; *Revilonian* Staff; Sr. Play; Bible Study 2, 3, 4; Football Queen Attendant; Glee Club 1, 2, 3, 4.

POLLY PUTNAM

Glee Club 2, 3, 4; Bible Study 2, 3, 4; Student Congress 2; Girl Reserves 4; Dramatic Club 2; Football Queen 4; Cheerleader 1, 3, 4.

BETTY RENFRO

Glee Club 2, 3, 4; Vice Pres. Girl Reserves 4; Camera Club 4; *Revilonian* Staff; Library Club 2; Dramatic Club 2; Bible Study 1, 2.



SENIORS



PHYLLIS RICHARDS

Dramatic Club 2; Girl Reserves 4; Glee Club 4.

PATTY RILEY

Home Ec. Club 1; Bible Study 2.



GORDON ROFFE

Football 4; Hi-Y 4.

BETTY JEAN ROWLAND

Glee Club 2, 3, 4; Mixed Chorus 2, 3, 4; Girl Reserves 4; Camera Club 4; Bible Study 2, 3; Dramatic Club 2; *Revilonian* Staff; Trio 3, 4; Jr. Play; Sr. Play.



DORIS ROSE SCOTT

Bible Study 2, 3, 4; Girl Reserves 4; Glee Club 1.

HELEN SHORT

Glee Club 2, 3, 4; Mixed Chorus 2, 3; Dramatic Club 2; Bible Study 2, 3; Vice-Pres. Science Club 4; Girl Reserves 4; Beta Club 4; *Revilonian* Staff.

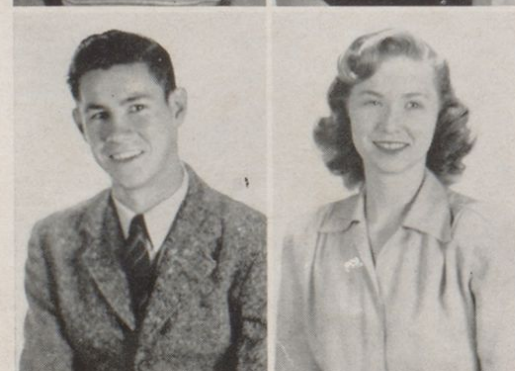


FRANCES SLUSHER

Mixed Chorus 3, 4; Trio 4; Glee Club 2, 3, 4.

ANNA JEAN SMITH

Glee Club 2; Beta Club 4; Girl Reserves 4; Bible Study 4.



JIM SPARKS

Football 2, 3, 4; Basketball 2, 3, 4; Vice-Pres. of Junior Class; Bible Study 4.

ETHELYN STULTZ

Revilonian Staff; Girl Reserves 4; Bible Study 4; Dramatic Club 2; Mixed Chorus 4.

SENIORS

FRED STULTZ

Hi-Y Club, Vice-Pres. 2; Jr. Class Vice-Pres., 1944; Ro Club 2; Basketball 2, 3; Football 2, 3; U. S. Army 1943 and 1944.

BILL VALLANCE

Revilonian Staff; Jr. Play; Sr. Play; Hi-Y Club 3; Sec'y of Hi-Y 4; Bible Study 3, 4; Mixed Chorus 4.

JENNY WALLACE

Girl Reserves 4; Bible Study 4; Dramatic Club 2; Attendant to Football Queen 4; Glee Club 1, 2, 3, 4; *Revilonian* Staff.

BETTY WILLIAMS

Trios 2, 4; Mixed Chorus 2, 4; Glee Club 1, 2, 4; Girl Reserves 4; Bible Study 2, 4; Sr. Play; *Revilonian* Staff; Band 1.

GLENNA JEAN WILSON

Girl Reserves 4; Bible Study 4; Beta Club 4; Home Ec. Club 4.

OLIVE SAVAGE YOUNG

Beta Club 4; Home Ec. Club 4; Bible Study 3, 4; Girl Reserves 4.



"Billy" Vallance



Camera Shy

ZELMA BARKER

KENNETH HAYES

DONALD MILLER

CHARLES NEWSOME

EVERETT PENNINGTON

BILL SHELTON

Called to the Service

JUNIOR CYRUS

Navy



SENIOR FAVORITES

Valedictorian

JULIUS PAUL FOUTS

Salutatorian

ORILLA FRALEY

Best Citizen

ILEEN HARRIS

"Sweetness and modesty for her
have won

A place in the heart of everyone."

We are all very proud of our
D. A. R. Good Citizenship Pilgrim
who was chosen by the faculty and
senior class on the basis of depend-
ability, service, leadership, and pa-
triotism.

Best Athlete

DANNY LEROY

"In basketball he is far above par,
In fact, as an athlete we hail him—
our star."

If you have seen Danny in action
on the hardwood, you can readily
see why he was chosen for this
honor.



Most Beautiful

ERNESTINE HOFFMAN

"Her pretty looks the cottage might
adorn—

Sweet as primrose peeps beneath the
thorn."

Besides having good looks, Er-
nestine graciously lent her vocal tal-
ents to many school programs.

Most Handsome

GLEN MENSHOUSE

"A handsomer lad you'll never
meet—

He's a fine boy and a real athlete."

"Handsome is as handsome does"
can certainly be applied to Glen.



SENIOR FAVORITES

Most Studious

ANNAJEAN SMITH

"She has a head full of sense and a friendly disposition to go with it."

Quiet and studious, Annagene has justly won the coveted honor of being our most studious girl.

Most Studious

FRANCIS BYRNE

"Work is work and must be done—Nevertheless, I have my fun."

"Sleepy" is one of our boys who has the remarkable habit of getting all his home work.



Most Versatile

TONY LOU BASENBACK

"Modest, lovable, studious, sweet, A finer girl you'll never meet."

In addition to being our Senior Cheerleader, Tony Lou has found the time to take a leading part in many activities.

Most Versatile

DALLAS GILLUM

"Describe him who can—An abridgment of all that is pleasant in man."

Best all around student aptly describes Dallas because he has participated in various activities.



Most Popular

CAROLYN PRICE

"If you hear a laugh and see a grin—You may be sure she's just come in."

Doll has won her popularity by her avid enthusiasm in many activities and her inimitable ways.

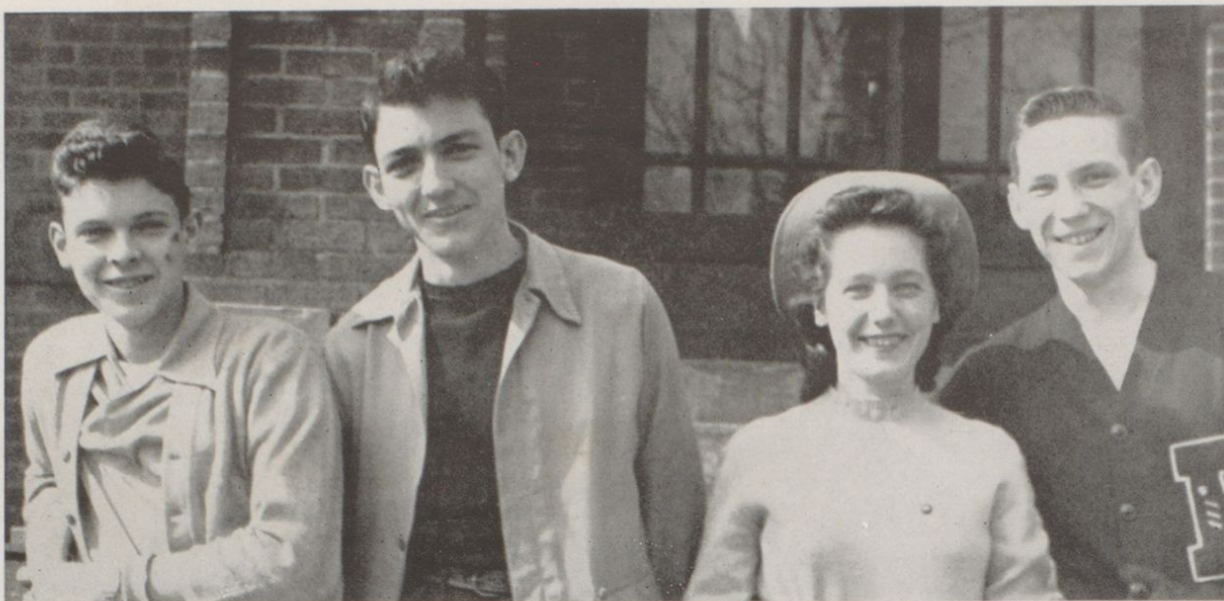
Most Popular

JUDY FOUTS

"Wherever he looked he was welcome—And he looked everywhere."

The requisite for popularity is a personality like Judy's. He is both Senior class President and Editor of the Revilonian.





President, Judy Fouts; Vice-President, Dallas Gillum; Secretary, Christyna Fosson; Treasurer, Danny LeRoy.

IN RETROSPECT

There have been six important events in the history of the world. The first was the creation of Adam and Eve. The second was the reign of King Tut. The third was the death of Julius Cæsar. The fourth was the discovery of America by Columbus. The fifth was the rise of "Swoon-King" Frank Sinatra. And the sixth was the entrance of the Class of 1946 into Russell High School.

Of these, the first five are of minor importance. Adam and Eve, I believe, are now dead. King Tut is in a museum (with his mummy). Julius Cæsar has been eclipsed by Mussolini. Columbus has moved to Ohio. And Sinatra is just a voice surrounded by a bow tie. Thus, the only one of these events which has retained its importance is the entrance of the Class of 1946 into high school. For this class not only made, but is still making history.

On September 7, 1943, over 100 sophomores, having had their last taste of the freedom of summer vacation, trudged willingly through the portals of Russell High School.

Our future mental power was revealed for the first time in the election of our officers who were: Howard Webb, President; George Carter, Treasurer; Claudine Porter, Vice President; Virginia Ferguson, Secretary.

But this first important year was mostly spent in selecting the easiest courses, acquainting ourselves with the customs of Senior High School, and learning to recite in class without advance preparation.

So we entered our Junior year. Diminished in numbers but not in mental strength.

For our officers this second year we chose: Danny LeRoy, President; Jim Sparks, Vice President; Ileen Harris, Secretary and Treasurer.

For our class colors we thought Blue and Gold an excellent combination, and the Red Rosebud as a class flower was agreeable to everyone.

Our abilities as salesmen were displayed as we triumphed over the Seniors in a magazine contest. We found that all our labor was worth while when the defeated Seniors awarded us a "super" party with refreshments and everything. We really had fun that night.

Our class plays, "Freddie Plays Cupid," which starred Gail Collins, Betty Rowland, Loretta Gillum, Glen Menshouse, Judy Fouts, Tony Basenback, and Virginia Ferguson, and "In May With June," which featured Frances Kouns, Dallas Gillum, Bob Kimbrell, Bill Vallance, Betty Callihan, Betty Brown, Ruth Millis, Danny LeRoy, and Berta Kirk, were great hits, with everyone agreeing that these Juniors really had talent.

All our activities were pointing toward one goal: an extra-special Junior-Senior Prom. In the middle of May we reached this goal. Working like beavers, we decorated the gym, not in the usual class colors, but in every shade of the rainbow. The nite club effect used in our decorations scheme was both unique and beautiful. That indirect lighting was really popular.

Betty Brown was crowned Prom Queen, and her attendants were: Ileen Harris, Ernestine Hoffman, Betty McKenzie, and Mildred Brown.

Our matchless decorations, coupled with the best orchestra available, made this prom an outstanding one—one that will long be remembered.

On this note of triumph we ended our Junior year and eagerly awaited our positions as Seniors, with all its dignity and importance, and the feeling of superiority over all the other classes.

Our minds (?) were occupied with thoughts of graduation and with choosing our class colors, Scarlet and Grey, and our class flower, a Red Rose. We chose for our officers: Judy Fouts, President; Dallas Gillum, Vice President; Christyna Fosson, Secretary, and Danny LeRoy, Treasurer.

However, we found time for many other activities; in our annual magazine sales contest, the Juniors (by fair or foul methods) managed to reach a few more prospective magazine buyers than we Seniors and, since more subscriptions mean more money, the Junior class waltzed off with the title of "champion salesmen" of Russell High School. They were officially endowed with this title of respect at a party given in their honor by the generous Seniors who didn't really mind the defeat.

Our play, "Campus Quarantine," broke box-office records and the general opinion was that it was the best play yet.

At the close of a highly successful football season the jubilant Red Devils selected Polly Putnam as their Queen. She was crowned after the last game at a dance sponsored by the Senior class.

Under the able direction of Coach E. M. Tyler our basketball team was runners-up in the 16th Regional Tournament. At the close of the regular season the team chose Christyna Fosson as their Queen for the basketball season of '45-'46.

These last four years have been happy ones. Our teachers and principal have done all that human beings could possibly have done to make our time here both profitable and pleasant. Our association with one another has been pleasant, too, and fruitful of lasting friendships that will continue for the remainder of our lives. Whatever our success and future happiness, I am sure that each one of us will be able to look back on our days at Russell High School and say, "Those were the four happiest years of my life."

By HELEN SHORT

SENIOR BABIES — GUESS WHO?

ANSWERS ON PAGE 66



1.



2.



3.



4.



5.



6.



7.



8.



9.



10.



11.



12.



13.



14.



15.



16.



17.



18.



PEPSODENT
S-M-I-L-E-S



BUS-LATE!



JUST-A-SITTIN'
AND-A-THINKIN'



RUFF-STUFF



"AUGURIES OF
INNOCENCE"



EVERYBODY'S
POSIN'



COUSINS?



CELEBRITY STORE
R.F. DAVIS AND CO.



3 STOOGES(?)



THAT'S A BOAT PEOPLE!



BILL-FRANCIS-"CHAPERON"



"BIG FEET" AND
"LITTLE FEET"

CLASS PROPHECY

Well, well! Here we are at the palatial Hotel Biltmore, owned and operated by *Bob Cunningham*, a former classmate. It certainly was nice of him to let us have our first ten years' reunion here. Ten years! My, has it really been that long since we graduated? Yes, it's 1956 now! . . . Say, look at those beautiful flowers donated especially for tonight by charming *Mildred Brown*. It's rumored she plans to open chain stores in big cities. Bet her life is just a bed of roses! . . . Listen to that dreamy music. Say, that bandleader looks familiar. Well, bless my soul, it's *Bob Kimbrell*! Music always was his dish. . . . Oh, how did our eyes escape this? Look at that dazzling beauty taking her position in front of the orchestra . . . what voice! It's our own *Ernestine Hoffman*, now a coast-to-coast favorite. . . . Let's drift over this way and see what's so awfully interesting that even our distinguished and dignified lawyers, *Gordon Rolfe*, *John Kouns*, and *Charles Newsome*, can't resist. Now we see!!! It's those captivating charms of our *Loretta Gilliam*, now a leading fashion model whose luscious curves and graceful gestures have made her one of America's No. 1 pin-ups. The crowd is gathering fast. Here comes laughing *Gail Collins*, the sports editor of a leading magazine. Remember Gail's interest in athletics? Here comes a trim little number. Why, it's *Janice Marshall*, with that smile still unchanged. She's a dietician at the hospital, and it's rumored a certain young intern has more than a professional interest in her. No wonder!! . . . Next we see happily married *Imogene Perkins*, the dark-eyed looker with the sweet smile. Imogene has a handsome husband and two children, who are her pride and joy. . . . Here is an interesting looking young woman, and what a handsome escort. It's our *Glenna Wilson*, who has the most fashionable beauty salon in the city. Her hair-do is proof of that. . . . Next we see *George Osburne*, a gallant fireman who has established quite a record for himself. . . . Approaching us now is a smiling young lady, *Tony Basenback*, sparkling eyes, and all. As you know, Tony is chief assistant to *Clyde McLaughlin*, that famous scientist who has gained his fame through atomic research. With their dynamic ability to burn, they surely could set the world on fire in a big way. . . . We learned that cute *Virginia Donehoo* is now connected with the local bank. She not only handles money, but her pay envelopes are not on the flabby side. . . . *Beulah Darby* is private secretary to the president of the local telephone company. We always knew that cheery ring to her voice would get her places! . . . Here's a sweet young woman, the former *Mary E. Carpenter*. She is the happy bride of *Donald Miller*, the local president of the Junior Chamber of

Commerce. . . . The versatile young lady with the press identification is none other than *Betty Rowland*. She is a favorite correspondent of *The Daily Chronicle*, of which our own *Jr. Cyrus* is editor. . . . A dignified group of young women catch our eye, and we are almost certain they are school teachers. They are *Anna Smith*, *Jenny Wallace*, *Betty Williams*, and *Alma Massie*. Such an array of beauty, plus grace and poise and personality, is rarely seen in members of the realm of learning. . . . My, what a stern businesslike appearance this man has. Let's get closer; perhaps we can recognize him. Why it's *Homer Adkins*. He owns and operates the city's nicest funeral home. Good business. Never a slack season. . . . Here is *Maxine Gambill*, who has attained fame as a swimmer. She finished first in the National Women's Contest and now holds the title of fastest swimmer in America. . . . The robust young gentleman with the strong hands is our own *Danny LeRoy*, who is chief mechanic at his own garage—nice chap. We hear he married that cute little *Christyna Fosson*, and they now have two little "grease-monkeys" of their own. . . . Delightful *Patty Riley* catches our eye next. Pat owns those exclusive apartments that everyone is clamoring for. . . . There's our *Virginia Ferguson* and *Olive Young*—sweet as ever. Being housewives certainly must be fun for them, as they still retain that schoolgirl charm. . . . Those unique paintings on the wall are the handiwork of *Ruthe Millis*, a famous artist. . . . Here comes that glamour boy, *Glenn Menshouse*, still the romeo type. That slick chick with him is *Ethylene Stultz*, a little beauty from school days. . . . *Frances Kouns* is sure enough walking on air. She is air hostess for Transcontinental Airlines, and it's rumored that *Jim Sparks*, a certain pilot, is doing tailspins for her. . . . *Hanna Gilley's* restaurant has drawn many a hungry couple within its portals. Her generous helpings of such dainty delicacies has sent business booming in a big way. . . . We just bumped into a blonde, *Betty Renfroe*, the gal who knows more about us than we know ourselves. Yes, Betty is very actively engaged in the Bureau of Vital Statistics in Washington, D.C. She surely has all the "low-down" about the "higher-ups." . . . Short, dark, and dimpled—that's our own *Wanda Lee Noe*. She's really a picture in her nurse's uniform, with her contrasting dark hair. No wonder her patients don't want to get well. . . . Have you ever visited that hat shop of *Betty Jean Haney's*? Her New York and Paris creations would put Hedda Hopper's collection to shame. . . . Could that smiling young woman coming this way be *Phyllis Brown*? Yes, and have you heard she's the town's only woman doctor? . . . Now we see attractive *Lois Miller*,

CLASS PROPHECY (Continued)

who is the National Women's Tennis champ. It's easy to understand where she got that beautiful tan. . . . *Bertha Justice* is that kind-hearted lady who keeps other people's unruly children—yes, she operates one of the town's nicest kindergartens. . . . Approaching us now is *Ruth Fosson*, the vivacious gal with the nice personality who is employed by a famous architect. . . . Here comes rosy, dimpled *Helen Short*, now a dean of women at city high school. She is working wonders with the bobby-sox crowd and, with her unspoiled personality, we can understand why. . . . The orchestra has swung into a fast number—wonder what? Oh, it's those dancing *Mullins* twins—*Ruth* and *Doris*. What trim figures, and such graceful maneuvering. . . . Over this way we see a nice young married couple. It's the former *Bernice Johnson* and *Joe Porter*. As you know, they own and operate the city's largest skating rink. Life is just one big whirl! . . . The hawk-eyed gentleman in the dark suit is *Bill Vallance*, the town's foremost detective. He can crack any case. . . . Here's a nice couple. It's the former *Doris Scott* and *Everett Pennington*. They are happily married, and have two little girls and an *Everett Jr.* . . . Wow! Get a load of this! It's *Gene Franz*, the heavy-weight boxer. He's put more men to sleep than the sandman. . . . Next, our eyes drift to a dashing young romeo, *Francis Byrnes*. As usual, he's surrounded by a chorus of beauties. . . . To "Sleepy" life is three things: wine, women, and song! . . . *Delores Lowe* surely looks stunning in that outfit. As we remember, she was always neat and sweet. She's a happily married housewife and mother now. . . . The dark-haired young woman near the window is *Polly Putnam*, the gym teacher of State University. You remember *Polly's* versatility, don't you? . . . Sweet *Mary Crawford* creates quite an excitement with her chic outfit, direct from Paris. *Mary* travels extensively, as her husband is an International Correspondent. . . . Mr. and Mrs. *Bill Shelton* just arrived. She is the former *Frances Slusher*, you remember. *Bill* is Superintendent of the city power company. He always was a live wire, anyhow. . . . We see friendly *Freda Callihan*, smiling just as in days of old. *Freda* is a happily married woman, with a beautiful home and a talented child. . . . Witty *Alma Amis* creeps into our view now. She's grown more mature but still retains that youthful charm that makes her such a success as a photographer's assistant. . . . Here's our famous *Bill Duff*, announcer at the local radio station. His voice is recognized by millions. . . . *Zelma Barker* looks on interestedly at the crowd of old classmates. *Zelma* has distinguished herself in the field of dramatics. . . . Here comes dynamic *Mildred Clarke*, and the very picture of health. *Millie* lives on a luxurious dairy farm

with her jovial husband and children. . . . Wonder what the excitement is over this way? Umm, now I see. It's that out-of-this-world dress *Orilla Fraley* is wearing. She designed it herself for, as you probably know, *Orilla* has her own exclusive shop where her own creations are sought after—by the town's elite, of course. . . . The smooth little number over this way is *Opal Cole*. She owns the popular little confectionery shop where all the young crowd hangs out. . . . There can be no mistake about *Ileen Harris*, private secretary to *Freddie Stultz*, who owns *Stultz's* Construction Company. His motto is: "We build 'em to stay built!" . . . *Ella Mae Dean* sweeps by with an air of dignity and importance. No wonder—*Ella* has an important secretarial position in the offices of the F.B.I. She's definitely in the arms of the law! . . . *Catherine LeCler* and *Ann Mallory* are busily conversing—probably on matters concerning world affairs, as both girls married news commentators. . . . *Patty McKenzie* looks as young as ever, even if she is the mother of lovely twin daughters. Her husband certainly looks proud of her, and justifiably so! . . . *Phyllis Richards* has the true grace and sweetness of a minister's wife. Her husband has brought comfort to the souls of many, and smiles to her face. . . . *Helen Mullins* owns quite a chain of classy restaurants and has become quite an expert in the business world. She isn't so bad in the "personality" department, either. . . . *Katheryn Merritt* flits about agilely (?) snapping photos for the local paper where she is star photographer. *Katy* is always first with the latest, as usual. . . . *Juanita Dingus* greets us cheerily as she swirls around among her classmates. *Juanita* is the nice receptionist at the offices of *Dr. Dallas Gillum*, the famous bone surgeon. . . . Looks as if we're going to have dinner now. But wait, there's *Frances Bennet*. I must say hello at least—but definitely! *Frances* is program director at a radio station in Cincinnati. . . . At last we have found our place at the table. Did you ever see such a lovely arrangement? And such tasty food! Looks as if the speeches are in order now. Here's the first lady. Why it's *Carolyn Price*! She is president of the local woman's club. Quite a talker, too. Just goes to show you—brains can accompany beauty, too! . . . Gee, everyone seems to be having a good time. This reunion business was a wonderful idea. It's amazing to learn what takes place in one decade. But—sh-h-h-h—another speech, and oh, look who it is! It's *Judy Fouts*, rather, I should say, the Honorable *Julius Fouts*, as he is now Governor of our State. . . . Yes, we as the Class of 1946, have made quite a name for ourselves in this brief time. Just give us another few years and you'll see smoke as we onwardly blaze a trail of glory.

By ORILLA FRALEY.

CLASS WILL

We, the members of the Senior Class of Russell High School, State of Kentucky, being physically incapacitated and mentally more so, do make, publish, and declare this, our last will and testament, in manner and form as follows:

To Mr. Evans, we leave all the headaches and responsibility of caring for all the Senior classes yet to come.

To Miss Fouts, we bestow the so lovely job of getting out all future yearbooks.

To all the Faculty, we wish to leave the gift of all our chewing gum, paper wads, and all the homework which we did not do.

The following Seniors wish to bequeath upon the unsuspecting undergraduates the miscellaneous talents, habits, and possessions which are theirs, to-wit:

Clyde McLaughlin wills his *dweat bid* muscles to the mirror in the shop so that everyone who looks in will think he is a man . . . *Tony Lou Basenback* leaves her position as Senior Cheerleader to *Virginia Strictland* . . . *Jim Sparks* wills all his height over six feet to *Willie Blevins* . . . *Ruth Fosson's* love goes to a CERTAIN Merchant Marine . . . *Judy Fouts'* curly locks to *Mr. McDowell* . . . *Helen Short, George Osborne, and Bill Shelton* leave their Physics books to those brave Juniors who will use them next year . . . *Bob Kimbrell* leaves his "jumping jive" to *Poncho Prince* . . . *Wanda Noe and Betty Jane Haney* bequeath their height to *Johnny Thomas* . . . *Frances Slusher and Bill Vallance* will their love to *Bill Shelton and Mary Lou Lundsford* . . . *Gene Franz* wills his brawn to someone with a brain to make a perfect combination . . . *Janice Marshall* leaves her liking for the Carter County boys to anyone who wants it . . . *Doris Mullins* bequeaths her usual booth in the corner by the jukebox in Scott's to *Joan Barbour* . . . *Ella Mae Dean* leaves her cute and engaging grin to *Anne Kretzer* . . . *John Kouns'* good conduct in study hall goes to *Eugene McClurg* . . . *Anna Jean Smith* bestows her easy smile upon *Lois Blevins* . . . *Carl Chapman* endows *Gay Price* with his respectful attitude . . . *Juanita Dingus* leaves her aptitude for bookkeeping to *Dorothy Hillman* . . . *Bob Cunningham and Freddie Stultz* leave their bus tokens for the Ironton Beer Loop to *Charley Perry* . . . *Alma Massie and Betty Lou Renfro* will their quiet ways to *Lorene Jones and Barbara Stephens* . . . *Glen Menshouse* leaves his dazzling smile to the lucky Senior, Junior, and Sophomore girls . . . *Betty Williams* requests that her hair-dos go to *Anna Lou Conley* . . . *Homer Adkins* endows *Jim Parker* with his way of getting along with *Miss Fouts* . . . *Phyllis Richards* leaves her knack of losing things, period . . . *Francis Byrnes* wishes to bestow upon *Tom Beasley* his title of *Casanova of Russell High* . . . *Evelyn Carpenter* wills her gay mood and witty remarks to *Mr. Caudill* . . . *Danny LeRoy* leaves his basketball captaincy to some lucky Devil . . . *Betty Jean Rowland* wills her big blue eyes to *Bobbie Scott* . . . *Joe Porter* leaves his love to the prettiest girl in the Sophomore class (don't rush, girls) . . . *Maxine Gambill* leaves her attractiveness to *Virginia Dollar* . . . *Gordon Roffe* leaves his fondness for girls to *Bob Greenslate* . . . *Ernestine Hoffman* wills her curves to *Jeannine Warnick* . . . *Jr. Cyrus* laeves his nickname of *PREACHER* to *Jimmie Conley* . . . *Lucky Jackie Johnson* gets *Patty McKenzie's* place in the Alto section of the Glee Club . . . *Ethelyn Stultz* bequeaths her sweet personality to *Mary Ellen Stephens* . . . *Bill Duff* leaves his regular (?)

CLASS WILL (Continued)

attendance to Edgar Foster . . . To Marilyn Millis, Polly Putnam leaves her bow legs . . . Bernice Johnson desires that her natural curly hair go to her sister Joann . . . Delores Lowe leaves her musical ability to Coleen Moore . . . Loretta Gilliam leaves a foot of her hair to make moustaches for the Jr. boys . . . Lois Miller wills her love for popping gum to Betty LeMasters . . . Olive Young leaves her ability for getting a husband early in life to Theresa Huffman . . . Virginia Ferguson wills her dark beauty to Juanita Ratliff . . . Orilla Fraley wills her love for Mathematics to her brother Roger . . . Donald Miller leaves his ability to graduate at the half to Bob Justice . . . Phyllis Brown's position as secretary to Mr. McDowell in fourth period to "Doc" Cantrell . . . Charles Newsome wills his place as center on the "B" team to Jackie Pat Riggs . . . Christyna Fosson leaves her ability to sew to Marjorie Adams . . . Everett Pennington's good-driving methods to Miss Fuller . . . Catherine LeCler leaves her wavy hair to Mr. Davis . . . Alma Amis's ability to impersonate the faculty goes to Helen Thompson . . . Ileen Harris leaves her capability of getting the good-citizenship award to anybody that deserves it . . . Doll Price bequeaths her turned up nose to Gene Moore . . . Zelma Barker bestows her lipstick to Joann Ramey . . . Freda Callihan's skill in typing goes to her sister, Lethea . . . Mildred Clarke wills her long hair to Nilda Dunn . . . Opal Jane Cole leaves her skating ability to Helen Franz . . . Mary Crawford bestows her good grades in Mr. McDowell's class to Ruth Anne Smith . . . Dallas Gillum bestows upon Delmar Little his ability to impersonate women . . .

Hannah Gilley wills her seat on the 8:45 bus from Flatwoods to Clotine Dillow . . . Bertha Justice leaves her locker full of papers to a Junior . . . Ann Mallory leaves her hot licks on the clarinet to Jackie Rece . . . Kathryn Merritt wills her ability to work and to go to school at the same time to Irene Ison . . . Helen Mullins leaves her jovial manner to Peggy Tuttle . . . Ruth Mullins bestows her ability to sell ads upon Wilma Blevins . . . Frances Kouns leaves her acting ability to Anna Hill . . . Ruthe Millis bequeaths her high C range to Thelma Scott . . . Jenny Wallace leaves her fickle love affairs to Winnie Myers . . . Imogene Perkins gives to Betty Williamson her soft voice . . . Patty Riley wishes Juanita Ratliff to receive her love for the Navy . . . Mildred Brown wills to Ruby Miles her position as a typist on the Revilonian . . . Doris Rose Scott gives to Virginia Green her place in Home Economics Class.

To the Juniors, we leave our home room, our seats in chapel, our dignified (?) manner, our place in the hearts of the faculty, and our school spirit.

And for the Sophomores, we have nothing left but a lot of good (?) advice. Do not study too hard (do not even study) for it does not pay. It will make you sick and unhealthy. If you would obtain good grades without study, then you should always laugh at the teacher's jokes, even though you may have heard them hundreds of times, bring the teacher a nice shiny apple every morning and be always willing to run here and there as a messenger boy or girl.

Besides these gifts of an ordinary nature, we leave of our own free will this school in which we have spent a pleasant four years and in testimony whereof, we hereunto set our hand and seal, and declare this to be our last Will and Testament, this 23rd day of May, in the year of our Lord, one thousand nine hundred and forty-six.

Signed:

BETTY JEAN ROWLAND, JANICE MARSHALL.



First row—Edgar Foster, Junior Stevens, Doris Jean Roark, Irene Ison, John Gilpin, Winnie Myers, Gene Moore, Colleen Moore, Gloria Jean McAllister, Dorothy Short, Anna Hill, Joan Ramey.

Second row—Patsy Grossl, Jim Roberts, Ruth Hamilton, Tom Beasley, Norma Roadcup, Jim Parker, Stella Offil, Peggy Tuttle, Virginia Dollar, Margaret Riggs, Betty Huband, Lorene Jones.

Third row—Richard Lewis, Vivian Hyler, Wilma Blevins, Addie Blevins, Dollwinna Lewis, Betty Lemaster, Anna Lou Conley, Betty Jo Pavey, Dorothy Abrams, Jeannine Warnick, Lorene Blair, Sarah Jane Barber.

Fourth row—Juanita Ratliff, Jim Conley, Boyd Fannin, John Sampson, Buford Cantrell, Jim Snyder, Dorothy Williams, Gaylord Price, Emma Jean Morgan, Ruby Miles, Jackie Johnson, Thelma Clarke.

Fifth row—Kathleen Jones, Catherine Worthington, Helen Thompson, Virginia Strickland, Ruth Burgess, Amandalee Rowe, Joan Barbour, Leana Vanderhoof, Dorothy Hillman, Helen Franz, Gloria Tackett, Mary Lou Lunsford.

Sixth row—Clotine Dillow, Lois Blevins, Josephine Riggle, Charles Horn, Ruth McKenzie, Elmer Rowland, Bernice Whitt, Carl Johnson, Molly Bawsel, Ruth Porter, Clotine Vanderpool, Bill England.

Class Officers

President.....	Virginia Boyd
Vice President	Jack Riggs
Secretary.....	Mildred Fosson
Treasurer.....	Betty Ruth Porter



JUNIOR JOTTINGS

In September, 1944, some 75 young hopefuls, as green as the Isle of Old Erin, entered the portals of Russell High School. We rapidly became a part of the school and began making our contribution to its activities. Saucy Sophomores they called us, and this year, some of the high and mighty seniors have labelled us "jerky Juniors." We are prone to think that some of the Seniors have a tendency to "prevaricate" (you may consult your dictionary!). There is still the little matter of the Seniors entertaining the Juniors to be cleared up. After all, we did win the Magazine Contest, didn't we? And too, the Seniors wouldn't want to miss that long awaited Junior-Senior Prom, would they? So when this yearbook goes to press, we imagine the dignified Seniors will be changing their attitude toward us "jerky Juniors" and treat us as their equals, if not their superiors. Everyone agreed that our Junior Play, "The Red Headed Step-Child," was a big success. We have had the honor of taking a leading part in most of the school athletics and activities. Our members hold offices of honor in practically all of the clubs. Our sponsors, Mr. Davis, Mrs. Farmer, and Mrs. Wade, have been very patient with us and we appreciate all the kindly advice and assistance which they have given. We are eagerly looking forward to next year when we will be Seniors—and then, just you watch us!

Sunny

Gophers

19

46



SOPHOMORES

In September, 1944, a large class of Freshmen met and elected officers. We managed to glide nicely through our first year even though we "were what Seniors used to be before they grew up to be Important Persons and put on Airs." Our class officers were: President, Jimmy Williams; Joyce Carman, Vice-President, and Betty Flocker, Secretary-Treasurer. It wasn't told to us, but we heard that we overran the halls, produced much noise unnecessarily, and annoyed the faculty to no end. We were determined to let nothing stand in our way—even the "sneers" from the superior sophomores, jeers from the Juvenile Juniors, and scorns from the Senile Seniors, failed to daunt the enthusiasm of the "funny Freshmen" who were really on their way up in the world . . . Well, you can't deny that our famous "John" was on his way up—and that meant us!

Then came 1945—and we came into the sophomore class. We were so thrilled to get out of that Freshmen stage—'cause we're almost all grown up . . . Our class number slightly increased and what do you think??? The Sophomore Class has the distinction of being the largest class in the school this year. . . . That in itself is a great inspiration to us . . . after all, there's safety in numbers! We again chose most capable officers, they being, Jimmy Williams, President; Leondas Holbrook, Vice-President; Joyce Carman, Secretary, and John Thomas, Treasurer. Our class has not been found wanting in the school activities. We have been well represented in various clubs and in the band. We have the distinctive honor of having John Thomas in our class and that fact alone makes our heads go up in the air a little higher. John was chosen on the All-District and All-Regional Basketball Team. Just you wait, you'll be hearing more about us later.

Pictured on the opposite page are:

First row—President Jim Williams, Vice-President Leondas Holbrook, Secretary Joyce Carman, Treasurer John Thomas.

Second row—Ruth Scott, Sonny Creech, Delores Clark, Jim McKenzie, Marjorie Adams, Bob Phipps, Marilyn Millis, Robert Greenslate, Bill Kingery, Virginia Greene.

Third row—Fenton Wyant, Helen Milligan, Charles Burch, Ruth Ann Smith, Sam Simpson, Mary Mayse, Ed Putnam, Barbara Stevens, Willie Blevins, Peggy Poole, Louise Kretzer, Bob Scott, Wanda Menshouse, Bill Fraley, Mary Stevens.

Fourth row—Sarah O'Brien, Lawrence LeBrun, Delores Sloan, Elwood Daniels, Aileen Giar, Jim Menshouse, Lucille Horsley, Johnny Nuchols, Cleo Tackett, Bob Justice, Darlene Willis, Eugene McClurg, Lois Mackabee, Bob Queen, Bill Broughton.

Fifth row—Jack Brown, Virginia Boyd, Charles Gayheart, Doris Bowe, Bob Anderson, Mary Perkins, Luther Lester, Alice Collins, Charles Roark, Beatrice Kelley, Charles Clarke, Loretta Gilliam, John Vice, Betty Williamson, Juanita Stevens.

Sixth row—Beulah Clark, Maurice Webber, Nadine Frizzell, Doris Riggs, Bill Clark, Edith Adkins, Lou Fugate, David Franz, Freda Jarrells, Delmer Little, Ruth Horne, James Prince, Theresa Hoffman, Carl Bradley, Herbert McIntyre.

Seventh row—Donald Mills, Virginia Nolan, Donald Adkins, Mildred Downs, Lois Lycans, Hobert Dillon, Garnet Francis, Betty Jo Cox, Nelson Walker, Clara Offil, Imogene Cox, Gwendolyn Williams, Bob Broughton, Letha Callihan, Helen Snoddy.

Eighth row—Ava Weis, Emily Rice, Ralph Hoy, Dorothy Clarke, Jean Lycan, Warren Evans, Helen Stanley, Ellen Cochran, Bob Leabee, Joan Johnson, Genevieve Morriss, Willie Blevins, Betty Flocker, Betty Jo Bennett, Loretta Massie.



OUR GANG



"BIG JIM"



(DREAM GIRL)
(MODIFIED NIGHTMARE)



How 'D. "Doc" GET IN
HERE ???



BOSOM BUDDIES



WHO'S THE CHARACTER
IN BACK ???



NOTICE THE SCENERY



"TWO-OF-A-KIND"



"NUTS TO YOU,
TOO !!!"



AND ONLY SEVENTEEN



"FRANK SINATRA FAN CLUB"



JUST
PALS
!!!



READING BATMAN AGAIN FOUTS!



IN FRONT OF THE DOLLHOUSE



HAPPY THREE



WILD BILL



HAPPY US



MAN WITH THE HOE



LOOK GUYS!!



SOME PAIR



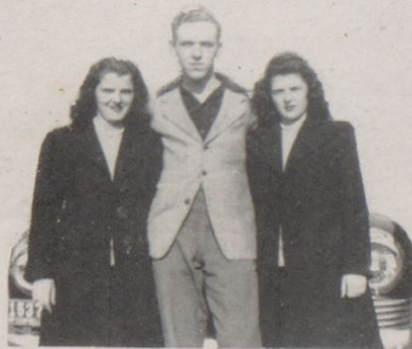
JUST RELAXING



HUBBA!!
HUBBA!!



HAPPY GIRLS?



SURROUNDED BY TWINS!



CUTE!!

CLASS POEM

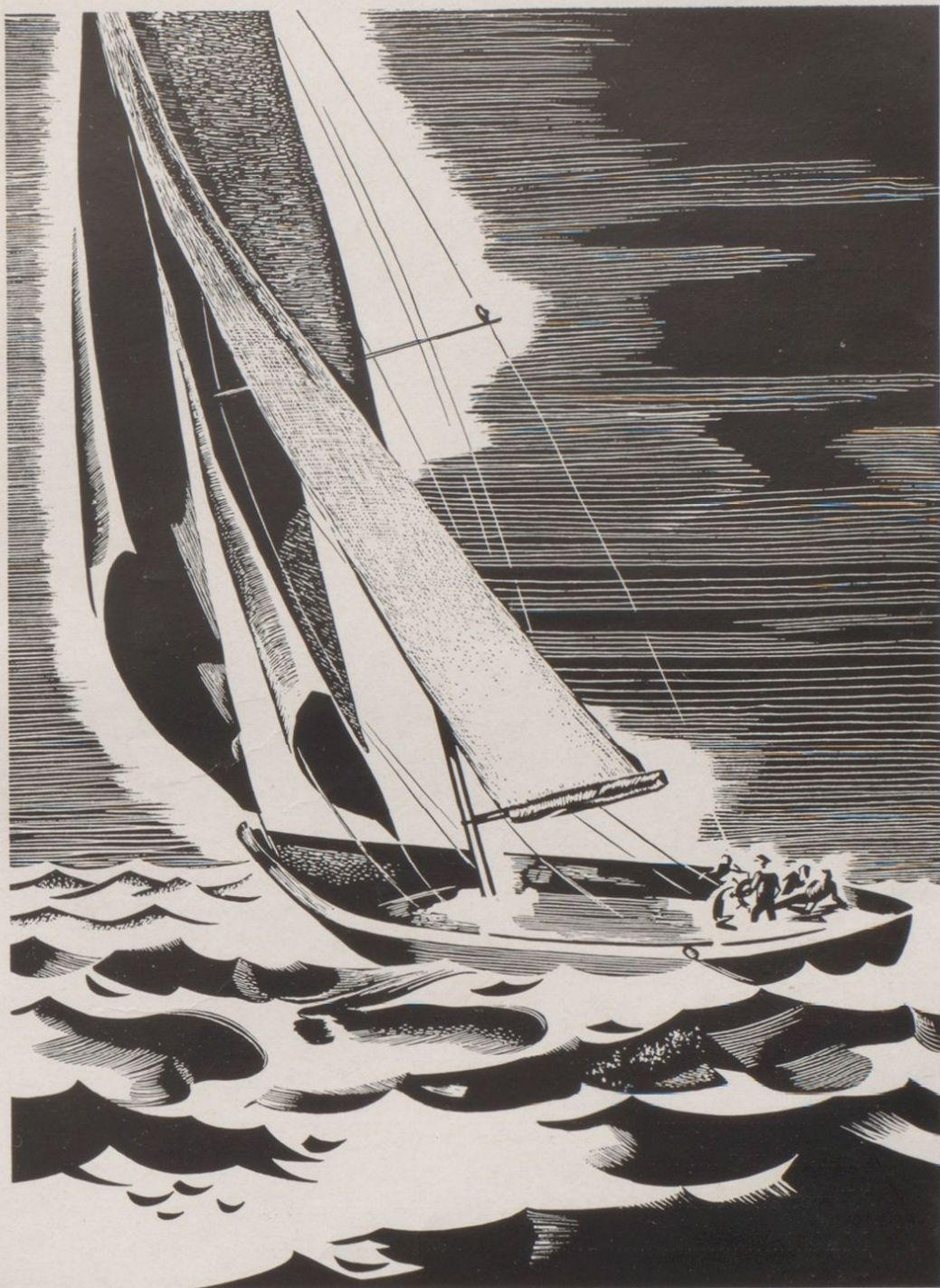
THE FUTURE'S MESSAGE TO YOUTH

By ORILLA FRALEY

Though short has been our journey
On the winding Road of Life,
And we've tasted only briefly
Of its pleasures and its strife,
We pause upon Life's Threshold
As we hear the Future say:
"You must face the World bravely
After Graduation Day."

You must meet Life's challenge squarely,
Never try to dodge or shirk;
If you're to be a true success,
You first must learn to work.
Life smiles on those who pass her door
With head and shoulders high,
Though they may meet with failure—
They're not afraid to try!

So as you reach the milestones
Of your journey through the years,
You will find that oft the sunshine
Hides behind a veil of tears.
Whatever be your chosen field—
Enter it with zest,
You'll find that labor's dividends
Are nothing but the best!



A T H L E T I C S

Football

The Russell High School Red Devil Football team had a very successful season this year under the leadership of Coach Gene Tyler.

Their regular schedule consisted of eight games, of which they won five and lost three. All eight games were played at home.

The season opened with the invasion of Pikeville, Russell losing by a score of 12 to 0. The next week Russell staged a comeback and won from Catlettsburg 12 to 6.

The Red Devils went on to win from Vinson of Huntington 19 to 6, and from McKell 25 to 0.

The following week Russell played the Raceland Ramblers, and it was another victory for Russell, 39 to 7, which was an upset, as the score was expected to be much closer.

Our last win of the season was from Louisa. Then the Red Devils suffered two defeats, first from South Point, and then from the Paintsville team.

At the close of the regular season the Red Devils accepted an invitation to play Manual High of Louisville, and while the boys lost 56 to 0, the team all enjoyed their trip to Louisville.

Clyde McLaughlin was chosen to be captain by his fellow teammates.

Six boys have played their last game for the Red Devils this year. They are: Captain Clyde McLaughlin, Glen Menshouse, Billy Joe Shelton, Jim Sparks, Charles Perry and Gordon Rolfe.

	We	They
Pikeville.....	0	12
Catlettsburg.....	12	6
Vinson.....	19	6
McKell.....	25	0
Raceland.....	39	7
Louisa.....	20	6
South Point.....	7	26
Paintsville.....	0	7
Louisville Manual.....	0	56



QUARTERBACK



WINGBACK



BLOCKINGBACK

FULLBACK



RIGHT END

THE GRIDIRON

1 JIM SPARKS - SIGNAL CALLING - QUARTERBACK

2 "RED" CREECH - HARD HITTING - WINGBACK

3 BOB PHIPPS - OUR BLOCKING BACK

4 "CHARLIE" BUCK PERRY - PLUNGER - PASSER - FULLBACK

5 GLEN MENSHOUSE - A DOWN FIELD RECEIVER - RIGHT END

6 CLYDE McLAVALIN - CAPTAIN - GOOD LINEMAN - RIGHT TACKLE

7 BILL KINGERY - HARD DRIVING GUARD - RIGHT GUARD

8 GENE TYLER - OUR FRESHMAN WHIZ - CENTER

9 CHARLIE BILL ROARK - OUR TOBACCO CHEWING MAN - LEFT GUARD

10 BILL SHELTON - A GREAT DEFENSIVE PLAYER - LEFT TACKLE

11 "BIG JOHN" THOMAS - OUTSTANDING PASS RECEIVER - LEFT END

12 "GUM" WYANT - OUR INJURED WINGBACK

LEFT END



RIGHT TACKLE

LEFT TACKLE



RIGHT GUARD

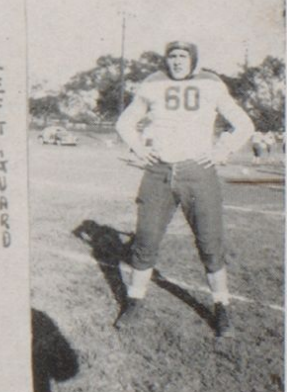


CENTER

WINGBACK



LEFT GUARD



*Santer
"Gum"
Wyant*



SIXTY-FOURTH DISTRICT CHAMPIONS

First row—Glen Menshouse, Gene Franz, Clyde McLaughlin, John Thomas, Jim Sparks, Danny LeRoy.

Second row—Charles Newsome, Jim McKinzie, John Gilpin, Bob Phipps, Bill Adams.

Third row—Jim Williams, Tom Beasley, Jack Riggs, Coach Tyler.

Last row—Managers, Luther Lester, Gail Collins.

Basketball

The Russell Red Devils opened the 1945-46 basketball season with a smashing victory from Vanceburg to the tune of 62-18!! After winning twelve games, there came one of those ever surprising defeats, this time from Catlettsburg. But the Red Devils proved that they were not to be discouraged by scoring overwhelming victories in the next few games. They lost only three games in the regular season play, the one to Catlettsburg, and the other two to Maysville and Olive Hill.

The Red Devils played great ball during the Eastern Kentucky Conference tournament, but they were finally defeated by Olive Hill 37-33.

Then came the district tournament. In the finals for the tournament the Red Devils met the Ashland Tomcats in a never-to-be-forgotten game as Russell romped to a 40-29 victory and the district Crown.

In the first round of the Regional tournament, the Devils defeated Mt. Sterling, but in the finals were defeated only five points by Breckenridge, Kentucky state Champions.

Receiving an invitation to play an exhibition game for charity at Lexington, the Red Devils defeated Dixie Heights of Covington 34-26.

Gene Franz, who has proved a very valuable asset to the team this year, returned from the armed services only shortly before the beginning of the bas-

BASKETBALL (Continued)

ketball season. Gene and "Big John" Thomas were chosen on both all-district and all-regional teams.

The boys who are Red Devils for the last time this year are: Capt. Danny LeRoy, Glen Menshouse, Clyde McLaughlin, Gene Franz, and Jim Sparks.

John Thomas, six feet and ten inches center, was high scorer for the season with a total of 415 points! Some going, John!

SEASON'S RECORD

1945-46 Russell Basketball Scores

	We	They
Vanceburg.....	62	18
Tollesboro.....	52	16
South Point.....	63	34
Greenup.....	50	40
Mt. Sterling.....	41	34
Oil Springs.....	55	40
Inez.....	50	49
Louisa.....	58	17
Dayton.....	49	47
Olive Hill.....	47	37
South Point.....	47	17
Raceland.....	41	31
Catlettsburg.....	34	41
McKell.....	52	18
Ashland.....	47	24
Fleming.....	43	32
Maysville.....	36	45
Louisa.....	43	16
Raceland.....	40	35
Greenup.....	60	39
Oil Springs.....	66	39
Ashland.....	55	28
Olive Hill.....	36	51
McKell.....	29	25
Dixie Heights.....	34	26

E. K. C.

Tollesboro.....	54	28
South Portsmouth.....	38	9
Raceland.....	55	20
Boyd County.....	54	22
Olive Hill.....	37	33

District Tournament

Catlettsburg.....	51	30
South Portsmouth.....	43	23
Ashland.....	40	29

Regional

Mt. Sterling.....	45	35
Breckinridge.....	44	39



First row—Virginia Strickland, Polly Putnam.

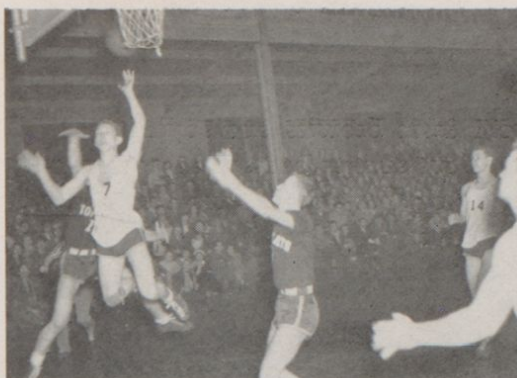
Second row—Dolores Clark, Tony Lou Basenback.

CHEERLEADERS

Above is an action view of the Russell High "Cheering Champs" for our Red Devils. These cheerleaders in their attractive maroon and white sweaters and skirts, led the ball teams of Russell High School on to glorious victories. In pep meetings, at the football and basketball games, they inspired vim, vigor and vitality to the team and student body. They have done a magnificent job in helping us to maintain a high reputation in athletic circles. We are very proud, indeed, of our Red Devil Girls, whose fine cheering and sportsmanlike conduct have endeared them to Russell High School and to our many Russell ball fans.

DANNY LeROY

Our Captain and the boy with the "never quit spirit."



"CHIP SHOT BY LeROY"



GLEN MENSHOUSE

A forward who always played his heart out in every game.



"THOMAS - FRANZ - REBOUNDERS"



JOHN THOMAS

Our 6'10" sophomore center, the highest scorer and All Regional center.



GENE FRANZ

Spark plug of the team, steady guard, selected for All Regional Team.



"JUMP BALL - MENSHOUSE + COLE"

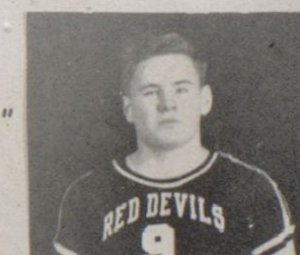


CLYDE McLAUGHLIN

A dependable guard who always gave his best.

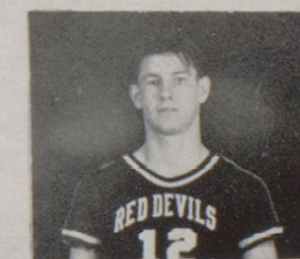


"FOUL SHOT" - BY "BIG JOHN"



JIM SPARKS

Our genial replacement who played well in any position.



David Evans

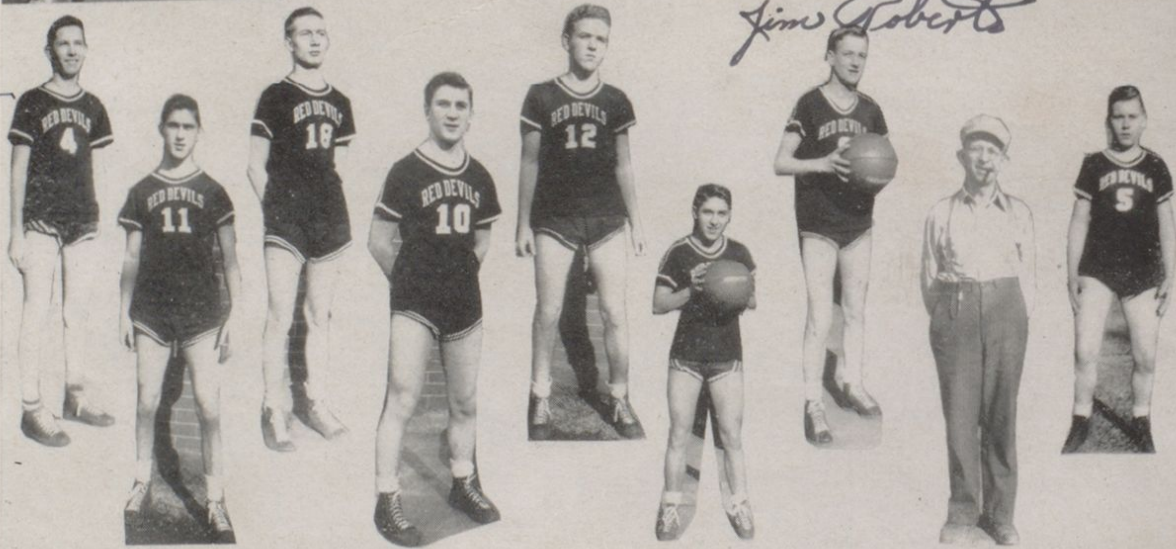
Bruce Taylor



Ernest Taylor

Jim Roberts

"Tom"





F E A T U R E S



Front row, left to right—Maxine Gambill, Glenna Wilson, Delores Lowe, Orilla Fraley (secretary), Dallas Gillum (vice-president), Lona C. Price (president), Bob Kimbrell (treasurer).

Second row—Phyllis Brown, Helen Short, Betty Rowland, Olive Young, Catherine LeCler, Annagean Smith, Ileen Harris, Tony Basenback, Ann Mallory, Wanda Noe, Emma Jean Morgan, Betty Porter, Janice Marshall, Judy Fouts.

Last row—Jackie Johnson.

Beta Club

The Beta Club of Russell High School is one of the numerous chapters scattered throughout the United States. It is indeed an honor to belong to this organization which is composed of students with an average of B or better. Our Beta Club was organized last year under the sponsorship of Miss Numia Lee Fouts. Its purpose is the promotion of Honesty, Service and Leadership, and to exert that type of influence upon the student body which will result in higher scholastic standards among the students.

They have achieved their main project for the year in that a scholarship fund has been started to aid worthy students to further their education.



First row—Senior Representatives: Joe Porter, Orilla Fraley, Ilene Harris, Clyde McLaughlin.
Second row—Junior Representatives: Jim Roberts, Betty Porter, Emma Gene Morgan, Jack Riggs.
Third row—Sophomore Representatives: Jim Williams, Betty Williamson, Maurice Webber, Bobby Scott.

Student Congress

Our student congress was organized to give the students of Russell High School a chance to govern themselves. Each class is represented by four members who were elected by class vote. These students were chosen for their outstanding qualities of leadership, cooperation, and honesty.

Through them, the students may present their opinions, criticisms and ideas on various subjects concerning school life. The Student Congress supplies not only a chance for the students to think for themselves, but it helps to relieve the administration of a few of the simpler problems. In our democracy, it is very important that we let our youth train for the leadership which will ultimately be theirs.



Girl Reserves

OFFICERS: President, Tony Lou Basenback; Vice-president, Betty Lou Renfroe; Secretary-Treasurer, Betty Ruth Porter.

SLOGAN: To Face Life Squarely

PURPOSE: To Find and Give the Best

Girls, girls, and more girls! Tall, short, smart, and dumb girls comprise one of the most active girls' organizations at Russell High School.

The Girl Reserves was organized in order to develop in the members of the club a well-rounded personality; to aid the school and community; to develop good citizens; and to be sympathetic with the unfortunate in the school and community.

In years to come, members of the club will remember with great joy, their many parties and their beautiful candlelight initiation.

We all live up to our code:

Gracious in manner;
Impartial in judgment;
Ready for service;
Loyal to friends;

Reaching toward the best;
Earnest in purpose;
Seeing the beautiful;
Eager for knowledge;

Reverent to God;
Victorious over self;
Ever dependable;
Sincere at all times.



The Hi-Y Club

Officers

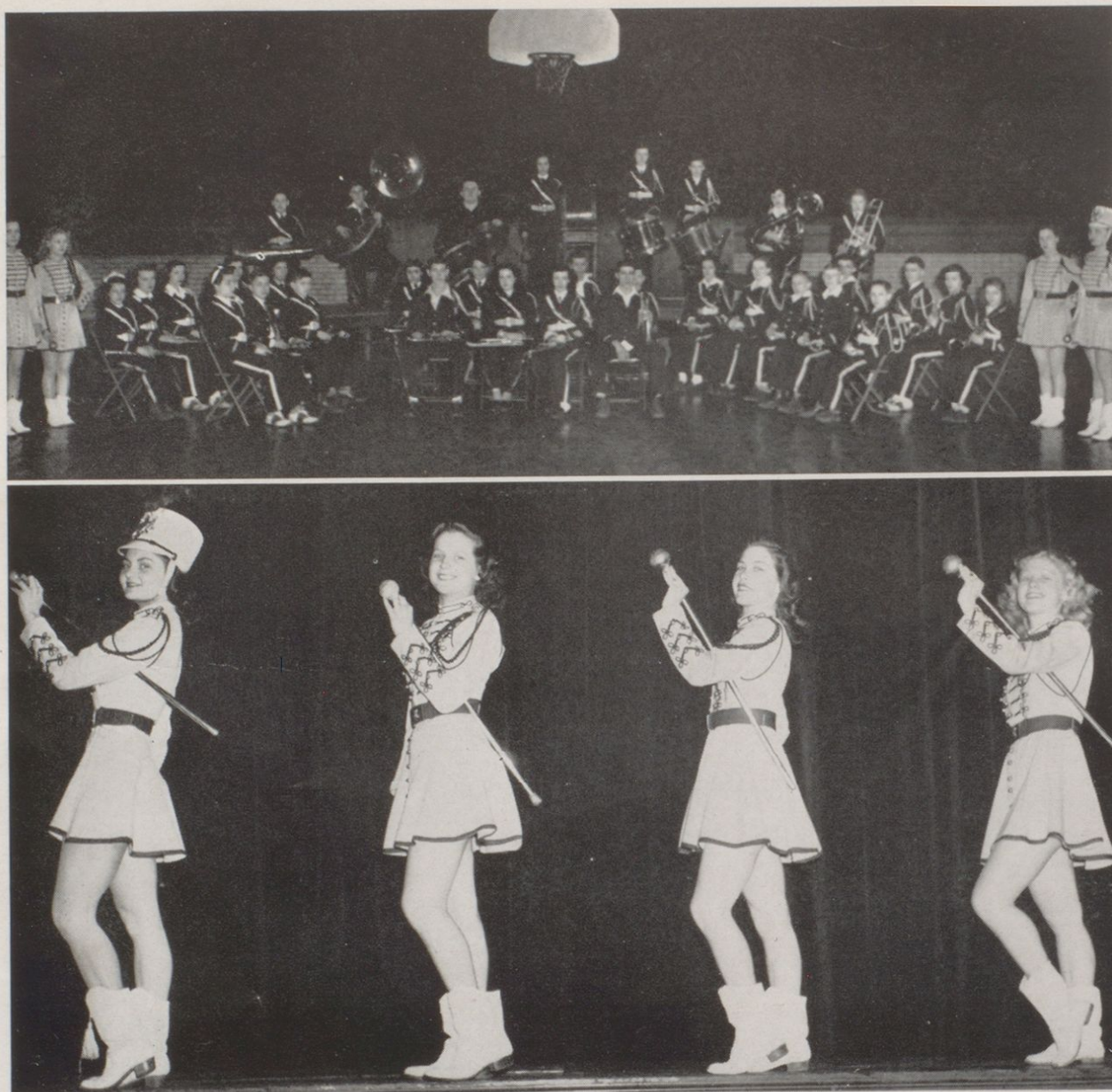
Jim Roberts	President
Joe Porter	Vice-President
Bill Vallance	Secretary and Treasurer

The purpose of the Hi-Y Club is to promote Christian Fellowship. It is, perhaps, one of the best High School Clubs for boys. Under the sponsorship of Mr. Wooten, secretary of the Y. M. C. A., and Mr. Caudill it has had a very successful year. One of its most important events was the Hi-Y Rally, which was held at Russell on January 19th. Some sixty boys from Raceland, South Portsmouth and Russell high schools attended this banquet. The Girl Reserves of Russell High School were invited to attend the social hour immediately following.

A Bible Study Class was organized with Mr. Wooten as one of the directors. Basketball teams were formed with Joe Porter, Gail Collins, Fenton Wyant and David Franz as captains of the four teams.

BAND

Rolling Drums . . . Blaring Trumpets . . . Marching Feet . . . Yes, here it comes! . . . The Russell School Band. This snappy group of students who have donned maroon and white uniforms are indeed an asset to any school. No home game would be complete without their martial airs which have helped to keep our spirits high and spur us on to victory. Mr. Claire Broce is the capable director of the R. H. S. Band. So we say, Hats Off! Our Band is Marching by!



MAJORETTES

More charming majorettes, we think that you will agree, can not be found in any school. Besides their grace and beauty, these girls can really twirl a baton. Ernestine Hoffman, the senior majorette, demonstrated her ability to lead the band between the halves of our home football games. Juanita Ratliff, our little blonde majorette, was chosen by the American Legion of Ironton to lead its band in the annual pageant at Columbus, Ohio. Midge Fosson and Ruth McKensie are new, but show great promise and ability.



Glee Club

Seeing is believing, and in the above picture you can see the array of pulchritude found in our popular Girls' Glee Club. This year we have sixty-four members with ultra-feminine voices, from the most lyric soprano to the lowest alto. We are learning all the fundamentals of music such as correct posture, diaphragmatic breathing, notes, and time. Our "warblers" have learned several different types of music—classicals, religious anthems, and a few popular songs. At present, we are busily engaged in perfecting our voices for our annual spring concert to be presented in April. Following the concert a formal dance is being planned for members and their dates. Several delightful and entertaining programs have been presented by the Girls' Glee Club which is under the able direction of Miss Edith Fuller.