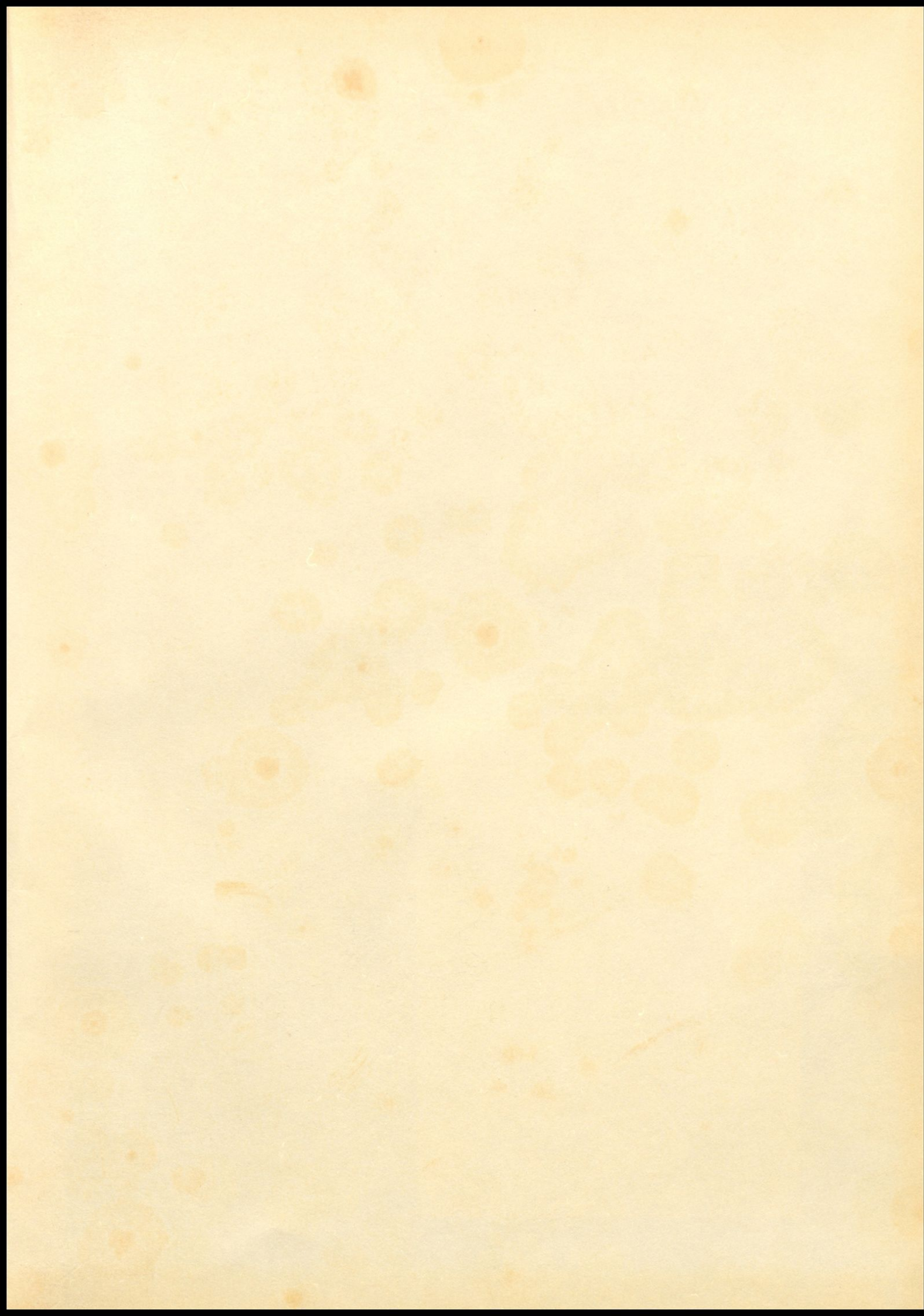
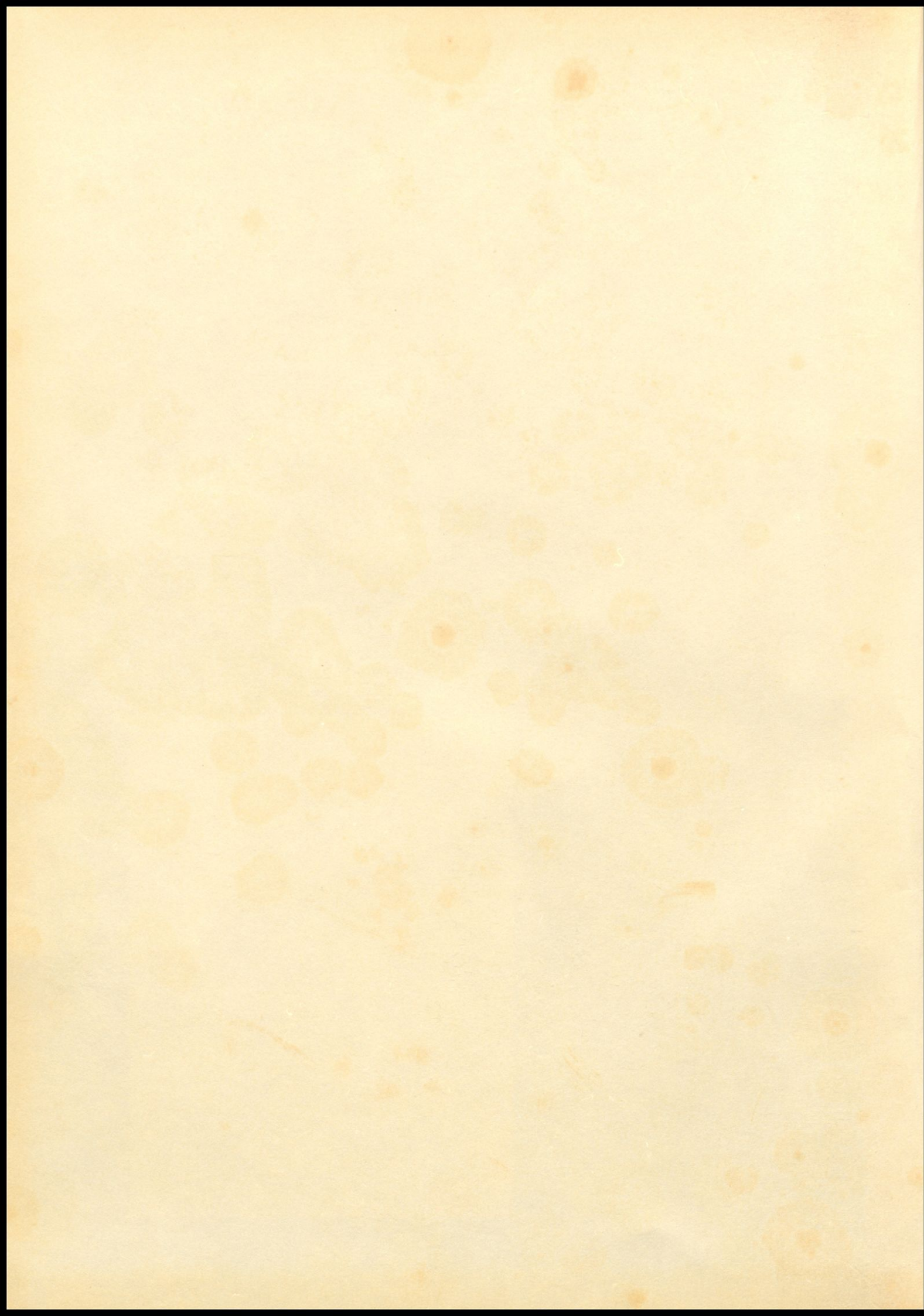


1964



THE PIONEER





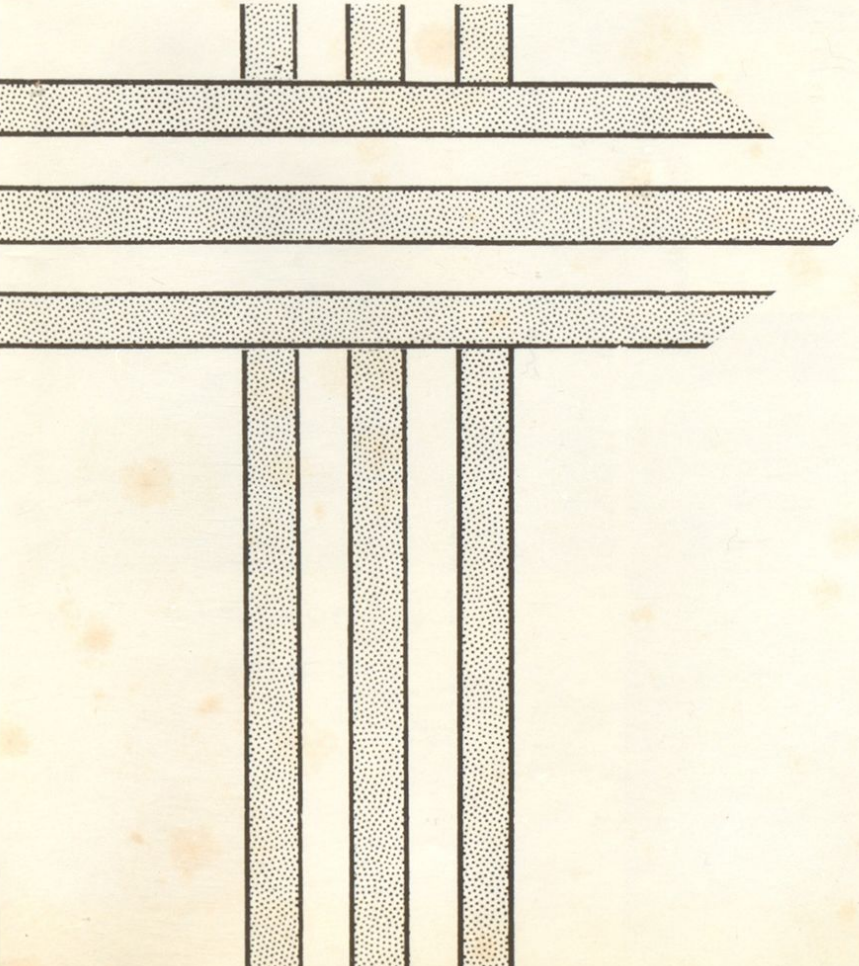
The Pioneer

1964

of

Wurtland High School

Wurtland, Kentucky



Presented by

THE PIONEER STAFF

Editor - Nyoka Palmer

Assistant Editor - Mary Grubb

Business Manager - Janice Madden

Subscription Editor - Grace Adams

Advisor - Mrs. Thelma Justice

The doorways to the stage of the high school years are memorable ones. Our yearbook staff hopes that through this book, it has portrayed some of the pathways that lead to the desired goals of all the students of Wurtland High School.

Education is not obtained by an easy method. There are many exits and entrances to the main stage - each leading to the goals set by those who are on the scene or by those just entering.

Through the scholastic, athletic, and the social activities Wurtland High School is dedicated to developing each and every individual to his potential - if such growth is occurring, he will be happy and remain until the end of the production.

The faculty serves as the guideposts along the pathways which leads to the stage. Without them, the students of Wurtland would be unable to enter the doorway which leads them to a successful future.



"ARE WE GLAD FOR THE BELL TO RING?"



"GOING HOME"



"COMING TO SCHOOL IS
SUCH FUN"

All the world's a stage,
And all the men and women merely players;
They have their exits and their entrances;
And one man in his time plays many parts . . .

AS YOU LIKE IT . . . Act II, Scene VII

William Shakespeare

The Program

ACT I	ACADEMIC
ACT II	FEATURES
ACT III	ORGANIZATIONS
ACT IV	ATHLETICS
ACT V	ADVERTISEMENTS
	AND ACTIVITIES
ACT VI	GRADUATION

Stage - - - - - Buildings
Cast

Stars - - - - -	Seniors
Understudies - - - - -	Juniors
Bit Players - - - - -	Sophomores
Tryouts - - - - -	Freshmen

Producers

Board of Education, Superintendent
and Principal.

Directors

The School Faculty

Artist and Technicians

Secretaries, Director of Pupil Personnel,
Custodian, Cooks, Bus Drivers, and the
Mail Carrier.



Dedication

We, the yearbook staff of 1964, express our appreciation and gratitude to Mrs. Lutie Nickel, who has been working with our English and speech department at the Wurtland High School for the past two years. Mrs. Nickel has devoted her entire life to guiding and aiding students in Kentucky and West Virginia. Because of her devotion to her work in helping to develop the minds and characters of the pupils, we dedicate the 1964 Pioneer to her, in her last year of teaching.

We sincerely thank you, Mrs. Nickel, for your patience and kind understanding. Good luck and best wishes wherever you may go.



Wurtland High School
Building



Wurtland High School
Building

The offices of the County
Superintendent and the
Director of Pupil Personnel.



The Producers —

Board of Education



CHAIRMAN OF THE BOARD

Wayne Traylor



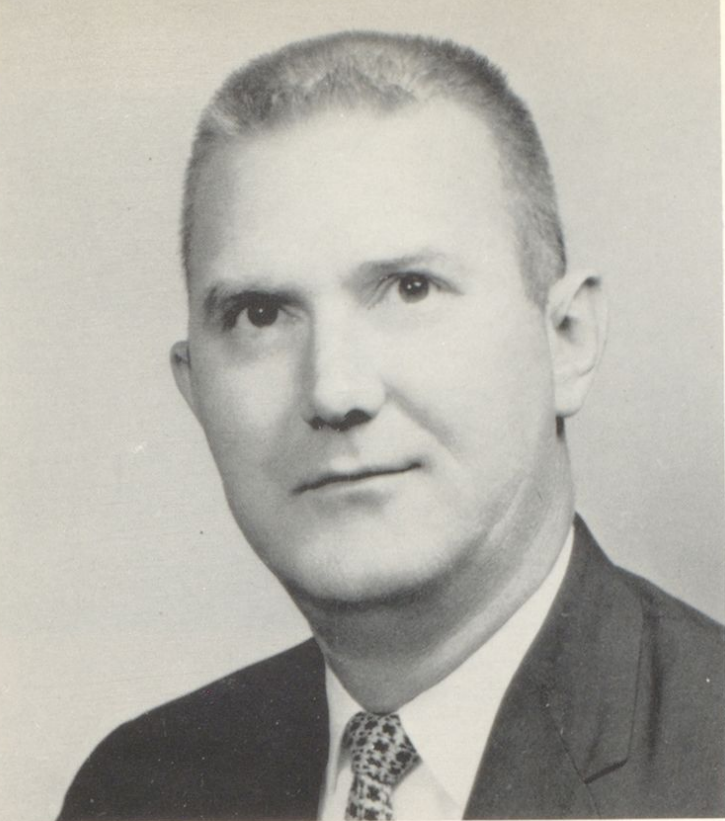
Frank Secrest



Edgar Hammond



Lewis Claxon



MR. BEN WEBB, Principal

Mr. Webb came to WHS in 1961. He is well equipped for his job as principal. He has experience as a teacher, a coach, and an elementary principal. Mr. Webb attended Ohio University, where he received his B.S. and M.Ed. Degrees. Each and every day he deals with student problems, supervises school activities, and maintains strict discipline in a fitting blend of authority and understanding.

The Producers

MR. ROSCOE STEPHENS, Superintendent

The smooth operation of the Greenup County Schools is the responsibility of Mr. Roscoe Stephens, our superintendent of schools. Mr. Stephens has served this county for many years as teacher and superintendent. In spite of his crowded schedule, he can always find time to help those who are in need.



Directors

"To stimulate, encourage, and direct learning is the soul and substance of the art of teaching."



DAVID ADAMS, Russell, Kentucky . . . wife, Chris . . . B.S. in Physics and Mathematics, Eastern Kentucky State College . . . Teaches Physics, Mathematics, and Chemistry.

CLATA BAKER, Greenup, Kentucky, Route 2 . . . B.S. in Commerce, Morehead State College . . . teaches Commerce and English.

PAUL BAKER, Greenup, Kentucky . . . wife, Elizabeth . . . children: Danny, Barbara, Kathryn, and Kenneth . . . A.B. in Social Studies, Morehead State College . . . teaches American Government and Civics.

ETHEL BUSH, Greenup, Kentucky . . . husband, Maynard . . . A.B. in Art, University of Kentucky . . . M.A. in Home Economics, Marshall University . . . teaches Home Economics.



DONALD COUNTS, Ashland, Kentucky . . . wife, Dotty . . . B.S. in Mathematics, Eastern Kentucky State College . . . teaches Algebra and Mathematics.

PHYLLIS EASTHAM, Wurtland, Kentucky . . . husband, Clarence . . . daughters, Toni and Sherry . . . B.S. in Commerce, Morehead State College . . . teaches Commerce.



Picture
Not
Available

BURMA FLETCHER, Raceland, Kentucky
. . . husband, James . . . Sons, Gary and
Tony . . . B.S. in Commerce, Morehead
State College . . . Teaches Commerce.

JIM FLETCHER, Raceland, Kentucky . . .
Wife, Burma . . . Sons, Gary and Tony
. . . A.B. in Physical Education . . .
teaches World History and World Geography.

ROBERT HAIGHT, Greenup, Kentucky . . .
wife, Edna . . . Children, David, Roy,
Dusty, Becky, and Carol . . . B.S., Agri-
culture, Berea . . . teaches Agriculture.

LARRY JORDAN, Greenup, Kentucky . . .
A.B. in Physical Education, Cumberland
College . . . teaches Science and Coach.



THELMA JUSTICE, Raceland, Kentucky
. . . husband, James . . . daughter, Linda
. . . B.S., Commerce, Eastern Kentucky
State College . . . M.A. in Guidance and
Counseling, University of Kentucky . . .
Special Degree, Marshall University in
Guidance . . . Counselor.

DIANA KIDWELL, Greenup, Kentucky,
Route 2 . . . Son, Billy . . . A.B. in Ele-
mentary Education, Morehead State College
. . . teaches health and Physical Education.

"Nothing is really impossible, teacher, except some
of the pupils you encounter."

Directors

"The world seldom notices who teachers are, but civilization depends on what they do."

Directors



CATHERINE McDANIEL, Greenup, Kentucky . . . husband, George . . . sons, George and Jerry . . . A.B. in Elementary Education, Morehead State College . . . teaches Biology and English.

LOUISE NELSON, Greenup, Kentucky . . . husband, Walter . . . children, Carol, Marvin, and Randall . . . Attended Ashland Center and Ohio University . . . librarian.

GLENNIS LILES, Greenup, Kentucky . . . husband, Herbert . . . daughters, Ethel Ann and Melissa . . . B.S. in Home Economics, Lincoln Memorial . . . M.A. in Education and English, Morehead State College . . . teaches English and Speech.

GEORGIA MAY, Lloyd, Kentucky, U.S. 23 . . . children, Bill and Hope . . . A.B. in Social Studies, Morehead State College . . . teaches American History.



MARY NELSON, Greenup, Kentucky, Route 1 . . . husband, Orin . . . children, Sandy, Stacy, Regina, and Mitchel . . . A.B., Elementary Education, Morehead . . . teaches English.

LUTIE NICKEL, Greenup, Kentucky . . . A.B., Education, Morehead . . . M.A., Administration, University of Kentucky . . . post-graduate work Peabody . . . teaches English.





LEONARD O'BRYAN, Greenup, Kentucky
 . . . Wife, Lucille . . . Daughter, Carol
 . . . A.B. in Social Studies, Morehead
 State College . . . teaches Mathematics
 and World Geography.

EDDIE JOE ROBINSON, Flatwoods, Kentucky
 . . . Wife, Pat . . . Son, Scotty . . .
 A.B. in Physical Education, Morehead State
 College . . . teaches Health, Physical Edu-
 cation and Coach.

JIM SPEAR, Ashland, Kentucky . . . B.S.
 in Mathematics, University of Kentucky
 . . . teaches Algebra I, Algebra II and
 Coach.

JOANNA WASHINGTON, Ashland, Kentucky
 . . . Husband, Jack . . . daughter, Sharon
 . . . B.S. in Home Economics, Berea . . .
 Teaches Science.



BILLY WATSON, Wurtland, Kentucky . . .
 Wife, Janice . . . daughter, Jujuana Dawn
 . . . B.S. in Music, Morehead State Col-
 lege . . . M.A. in Education, Morehead
 State College . . . teaches music and Band
 Director.

FERRELL WHITE, Russell, Kentucky . . .
 husband, Mitchel . . . Daughter, Susie
 . . . A.B. in Languages, Morehead State
 College . . . teaches English and Latin.

"To the average teacher, getting the very most out
 of her students is just about as difficult as trying to
 smuggle daylight past a rooster."

Directors



SECRETARY TO THE PRINCIPAL

Cynthia Holt



SECRETARY-TREASURER

Alta Schmidt

Makeup Artist



DIRECTOR OF PUPIL PERSONNEL

Robert Baker



SECRETARY

Betty Hardin

Stage Hands



BUS DRIVERS

STANDING: Jerry Traylor, Virgil Burke, Homer Allen, Homer Crisp and Kenny Skeens. SEATED: Claybert Boyles.

"Brightly smile and sweetly sing."

---Charles Wolfe



CUSTODIAN

Otis Oney

"They may rest from their labours; and their works do follow them."

PETER I



COOKS

Laura Belle Stafford, Maude Enyart, and Alberta Hale.

"Nothing to eat but food. . ."

---Benjamin F. King, Jr.

Mails from the North - the East - the West - the South - whence, according to some curious etymologists, comes the magical word NEWS.

---Knowles

MAIL CARRIER

James Archey



Senior Academic

STEVE HOLT - O'DONNA FRALEY



The Production

We, the graduating class of nineteen hundred and sixty-four, have at last won a hard earned oscar; a task which has taken many hours of rehearsing and study--a four-year production. At last we linger to look at our success.

ACTION!

This was the signal for 153 freshmen to have tryouts in their beginning roles. Royalty for the year was Beth Counts, as FFA Sweetheart. Directors for the year were: Mrs. Mary Lou Rose, Mr. Charles Banks, Mr. Leonard O'Bryan, and Mr. Edwin Hedgepath. The play cast consisted of: Steve Holt as President; Eddie Maddox as Vice President; Ethel Johnson as Secretary-Treasurer; Zelma Forbes as Reporter; and Linda Roark as Song Leader.

Characters who proved they possessed acting ability were on stage in the second year of production. The 132 bit players continued with their acting careers. The cast selected Shirley Holsinger and Gale Virgin as the Prettiest and the Most Handsome. The directors were: Ruth Cordell, Georgia May, Wade Womack, and Leo Floyd. The cast consisted of: James Brown, President; Teddy Stafford, Vice President; Richard Witten, Treasurer; and Eddie Maddox, Secretary.

Working hard to attain the final goal, we entered our third year of production with 110 understudies. Royalties for the year were Karleen Sexton and Gale Virgin as the Prettiest and the Most Handsome; Ellen Foster and James Brown as the Most Popular; and Karleen Sexton was crowned queen of the Junior-Senior Prom. During the year a class play entitled, "Fire Away" was presented. The directors were: Mrs. Diana Kidwell, Mrs. Georgia May and Mr. Bobby Lucas. Jimmy Bradford, President; Debbie Maggard, Vice President; Curtis Fletcher, Secretary; and Tracy Howard, Treasurer, were the cast chosen to guide us over a rough year.

A play cast of 77 stars reached their goal as the fourth year of the production was started. Royalties selected were: Nancy Reffett, Beta Sweetheart; Miss Pioneer and Miss Touch-down as Debbie Maggard; Basketball Queen and Betty Crocker Award went to Ellen Foster; and DAR Award was presented to Lucille Riley. "The Thread That Runs so True," by Jesse Stuart was presented by the class. The directors which guided the way were Mrs. Diana Kidwell and Mrs. Georgia May. The leading cast were: Frank Bostick, President; Ellen Foster, Vice President; and Mary Grubb, Secretary-Treasurer.

As we look back on our successful production, we feel depressed, for we know we must leave our beloved studio, WURLAND HIGH SCHOOL. Having our future planned and ahead of us, we say farewell to the, "school of our success."

Mamie Kouns--Mary Grubb



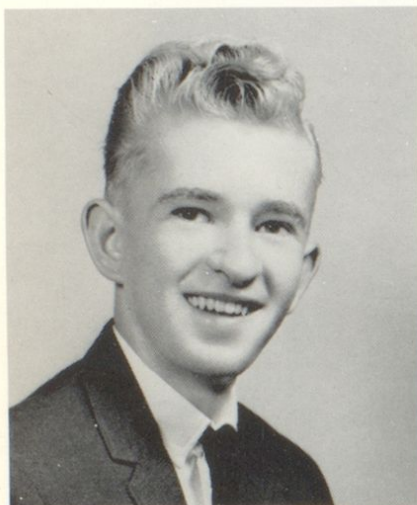
The Stars

ESTELLA ADAMS

Flatwoods, Kentucky . . . Tri-Hi-Y . . .
4-H Club

JULIA GRACE ADAMS

Greenup, Kentucky . . . Commerce Club
1, 4 . . . Junior Play . . . Annual Staff
Journalism Club

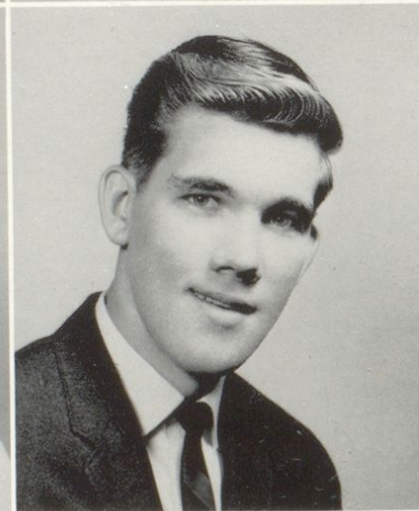


WILLIAM CURTIS ADKINS

Garrison, Kentucky . . . Drama Club . . .
Senior Play . . . FFA Vice President

JENNIE BALDRIDGE

Argillite, Kentucky . . . Library Club . . .
Commerce Club



SHARON KAY BARNEY

Wurtland, Kentucky . . . 4-H Club . . .
Pep Club . . . Tri-Hi-Y Club

CLEMONT BAYS

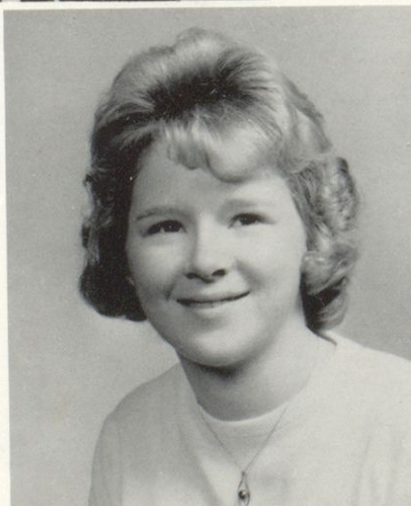
Greenup, Kentucky . . . Pep Club . . .
Drama Club . . . Senior Play

CAROLYN BAYS

Oldtown, Kentucky . . . Science Club . . .
Drama Club . . . Tri-Hi-Y Club . . . FHA

PAMELA BEAR

Garrison, Kentucky . . . Journalism Club
. . . President, Commerce Club





JUDITH BLANKENSHIP

Ashland, Kentucky . . . Drama Club . . .
Newspaper Staff . . . Senior Play

MARY SUE BLEVINS

Garrison, Kentucky . . . Commerce Club
. . . Annual Staff . . . Science Club

FRANK BOSTICK

Wurtland, Kentucky . . . Beta Club . . .
President 4 . . . Senior Play . . . Junior
Play . . . Student Council . . . Co-Ed-Y
Club

MACK BOWLING

Greenup, Kentucky . . . Drama Club . . .
Senior Play . . . FFA Club

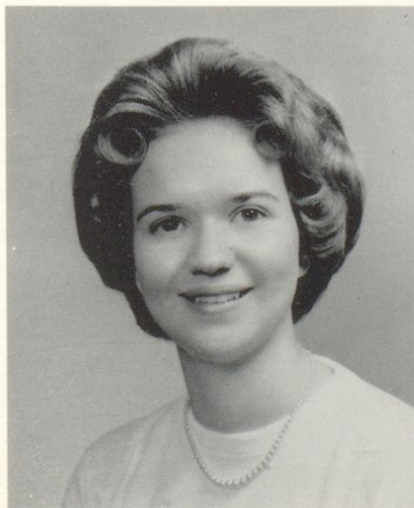


BARBARA BOYLES

Greenup, Kentucky . . . Senior Play . . .
Commerce Club . . . FTA Club

BESSIE BOYLES

Greenup, Kentucky . . . FTA Club . . .
Beta Club . . . Commerce Club



DREMA BROWN

Oldtown, Kentucky . . . Tri-Hi-Y Club .
. . . Science Club . . . Commerce Club
. . . Annual Staff

JAMES BROWN

Grayson, Kentucky . . . FFA Club . . .
Senior Play . . . Student Council Presi-
dent

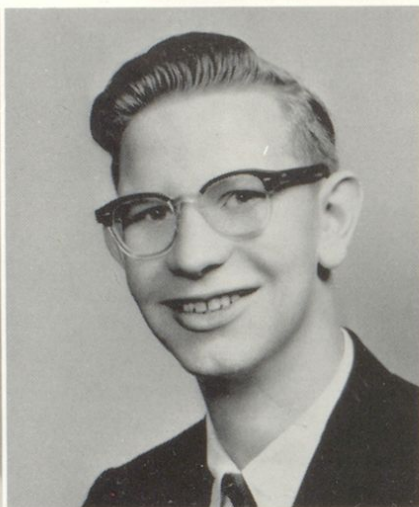
The Stars

MINNIE BROWN

Greenup, Kentucky

SHARON KAYE CARROL

Route 3, Grayson, Kentucky . . . Tri-Hi-Y
Club . . . Commerce Club . . . Annual
Staff

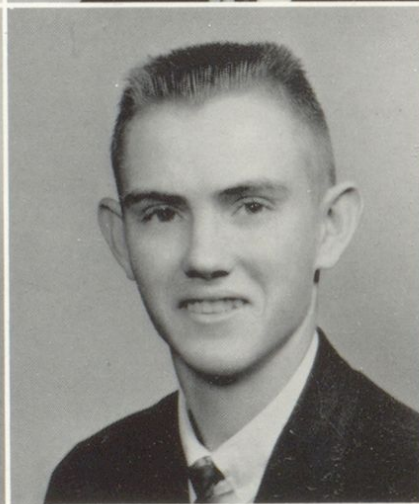


ELIZABETH ANN COUNTS

Wurtland, Kentucky . . . Beta Club . . .
Drama Club . . . Annual Staff . . . FFA
Sweetheart

JAMES LESLIE CRAFT

Wurtland, Kentucky . . . Senior Play . . .
Paper Staff . . . Dramatics Club . . . FTA
Club . . . Physical Education Club



CAROL DANIELS

Flatwoods, Kentucky . . . Senior Play . . .
Annual Staff . . . Paper Staff . . . Pep
Club

CARL FELTY

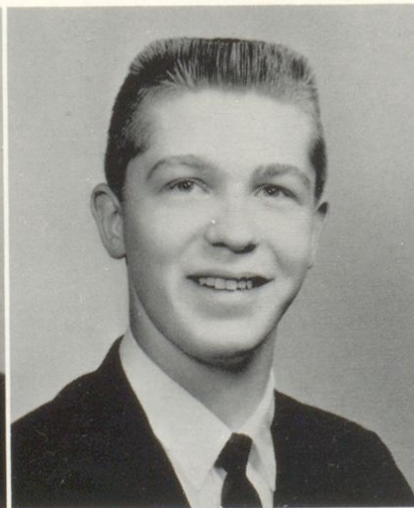
Oldtown, Kentucky . . . FFA

FLOYD FELTY

Grayson, Kentucky . . . FFA

LLOYD FELTY

Oldtown, Kentucky . . . FFA



The Stars

The Stars

CARLOS FLANNERY

Oldtown, Kentucky . . . FTA Club . . .
Conservation Club . . . 4-H Club

BARBARA FLANNERY

Oldtown, Kentucky . . . Commerce Club
. . . Annual Staff . . . Co-Ed-Y Club



CURTIS FLETCHER

Lynn, Kentucky . . . Football . . . Track
. . . Basketball . . . Drama Club . . .
Junior and Senior Play . . . Varsity Club

ELLEN FOSTER

Wurtland, Kentucky . . . Basketball Queen
. . . Cheerleader . . . Junior and Senior
Play . . . 4-H Club . . . Annual Staff . . .
Vice-President 4 . . . Pep Club . . . Drama
Club



O'DONNA FRALEY

Ashland, Kentucky . . . Beta Club . . .
Tri-Hi-Y Club . . . Junior Play Usherette

MARY GRUBB

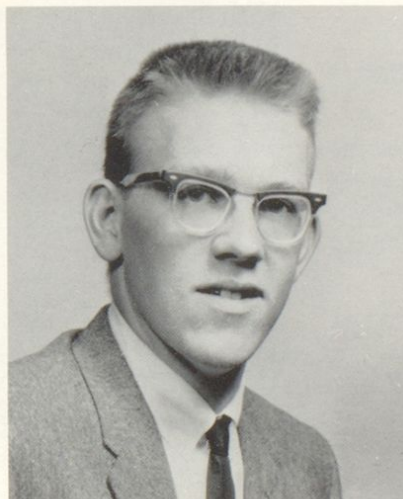
Wurtland, Kentucky . . . Beta Club . . .
Pep Club . . . Student Council . . . Tri-
Hi-Y Club. . . Library Club . . . Secretary-
Treasurer, 4 . . . Annual Staff

PAUL HAGER

Greenup, Kentucky . . . FFA Club . . .
Science Club

GLENN HALL

Greenup, Kentucky . . . Drama Club . . .
FTA Club . . . 4-H Club



The Stars

LINDA KAY HAMILTON

Greenup, Kentucky . . . 4-H Club . . .
Commerce Club . . . FTA Club

NORA HAMILTON

Wurtland, Kentucky

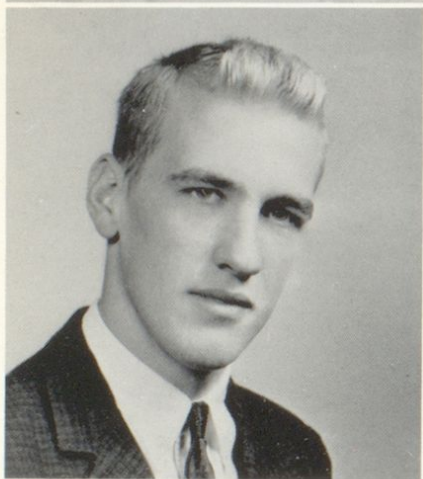


VIRGINIA HAMILTON

Wurtland, Kentucky . . . Office Helper

RAMONA HANSHAW

Wurtland, Kentucky . . . Commerce Club
. . . Senior Play . . . Drama Club . . .
Annual Staff



DAVID HARRIS

Greenup, Kentucky . . . Football . . .
Track . . . Pep Club . . . Varsity Club

NORMA JEAN HEABERLIN

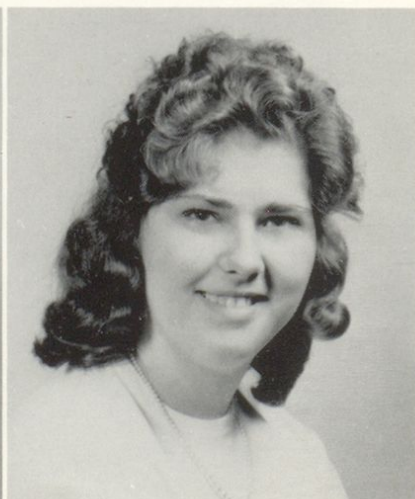
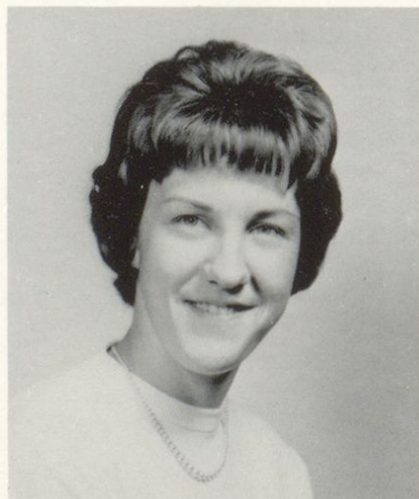
Greenup, Kentucky . . . FTA Club . . .
Annual Staff . . . Historical Club

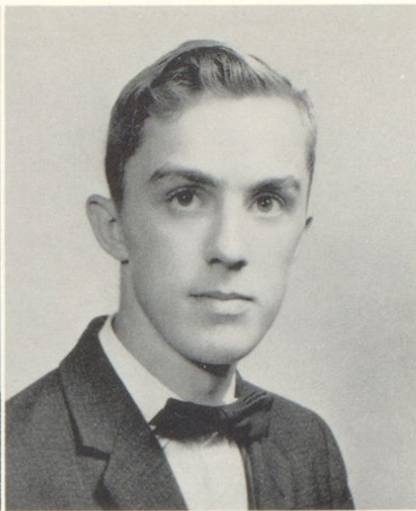
ALICE HENNECKE

Argillite, Kentucky . . . Commerce Club
Co-Ed-Y Club

LAWONA HICKS

Greenup, Kentucky . . . Tri-Hi-Y Club . . .
Pep Club . . . Library Club





STEVE HOLT

Wurtland, Kentucky . . . Co-Ed-Y Club
 . . . Drama Club . . . Beta Club . . .
 Junior and Senior Play . . . Band . . .
 Student Council

DAVID JOHNSON

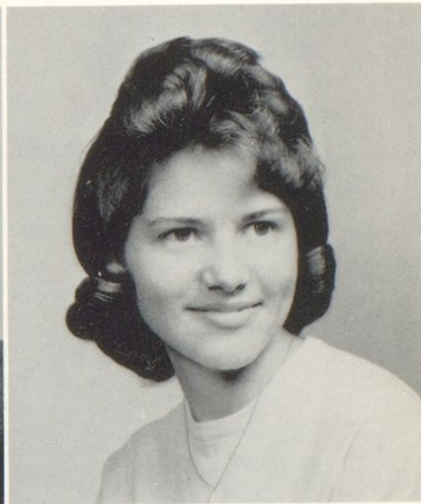
Greenup, Kentucky . . . Historical Club
 . . . Mathematics Club

FRED JOHNSON

Flatwoods, Kentucky . . . Historical Club

JUDY JOHNSON

Ashland, Kentucky . . . Commerce Club
 . . . Co-Ed-Y Club



LINDA KIRK

Flatwoods, Kentucky . . . Tri-Hi-Y Club
 . . . Pep Club . . . Library Club

LUCILLE KIRK

Argillite, Kentucky . . . Library Club . . .
 Commerce Club

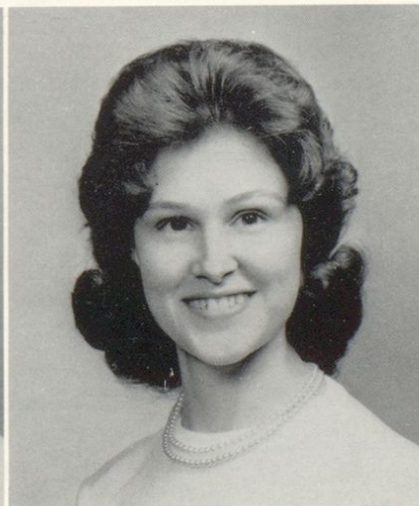


MAMIE KOUNS

Ashland, Kentucky . . . Co-Ed-Y Club . . .
 Commerce Club . . . Drama Club . . . Pep
 Club Junior and Senior Play . . . Annual
 Staff

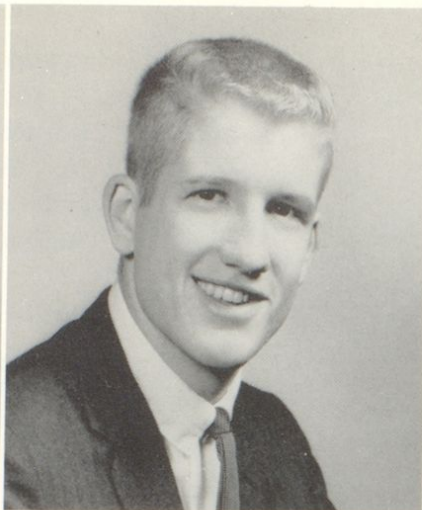
BETTY LARGE

Wurtland, Kentucky . . . Commerce Club
 . . . Annual Staff



The Stars

The Stars



JANICE MADDEN

Garrison, Kentucky . . . Junior and Senior
Play . . . Annual Staff . . . Science Club
. . . Drama Club . . . Journalism Club

EDDIE MADDOX

Wurtland, Kentucky . . . Football . . .
Basketball . . . Track . . . Pep Club . . .
FTA Club . . . Beta Club . . . Vice Presi-
dent 3 . . . Science Club

DEBBIE MAGGARD

Wurtland, Kentucky . . . Annual Staff . . .
Drama Club . . . Pep Club . . . Beta Club
. . . Majorette . . . Band . . . Senior
Play . . . Miss Pioneer

PHYLLIS MARTIN

Argillite, Kentucky . . . Library Club . . .
Commerce Club

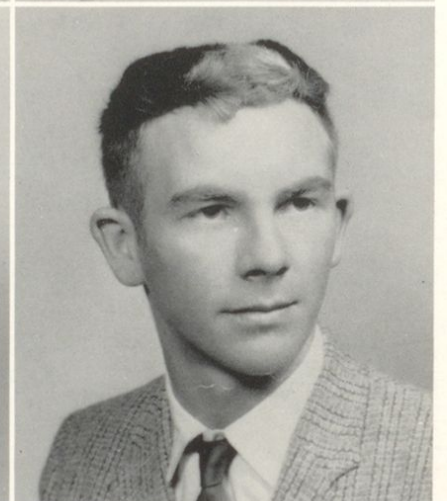
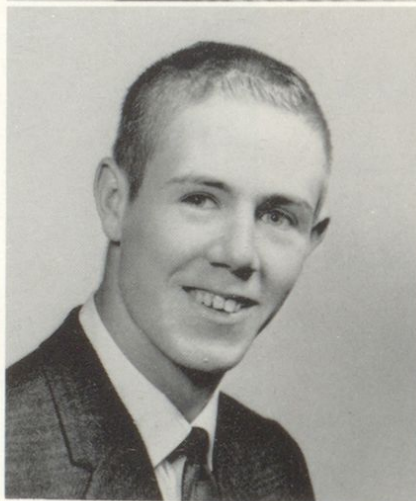


RAY McCLANAHAN

Oldtown, Kentucky . . . FFA Club . . .
Track . . . Football

DANNY MELVIN

Wurtland, Kentucky . . . FTA Club



KITTY MELVIN

Wurtland, Kentucky . . . Beta Club . . .
Band . . . Annual Staff . . . Junior and
Senior Play . . . Student Council

JOSEPH MESSER

Greenup, Kentucky . . . FFA Club . . .
Senior Play





PAUL MORMAN

Argillite, Kentucky . . . FFA Club . . .
Drama Club

FLOYD NEACE

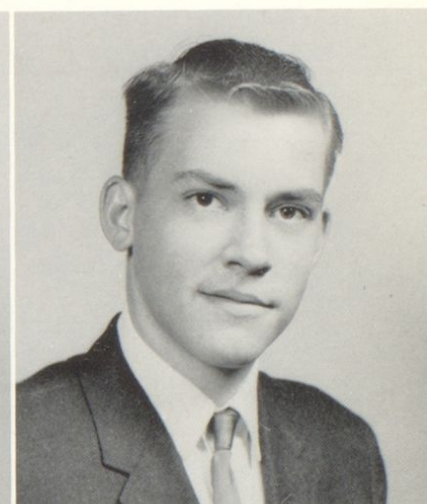
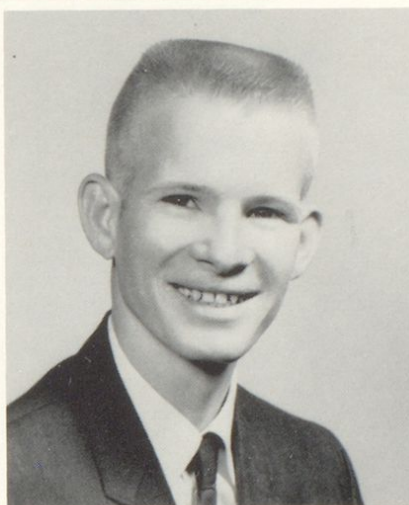
Oldtown, Kentucky . . . FFA Club . . .
Drama Club

RONALD NICHOLS

Greenup, Kentucky

ROGER OSBORNE

Load, Kentucky . . . Junior and Senior
Play . . . Drama Club . . . Science Club
FTA Club

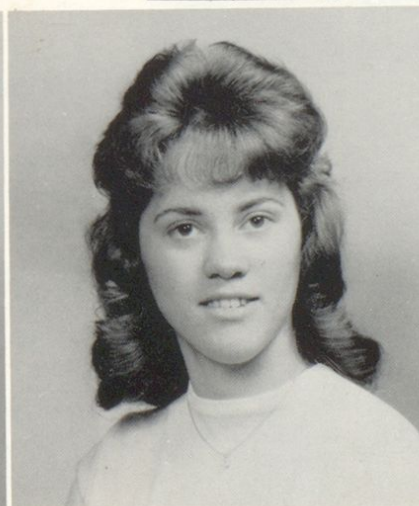
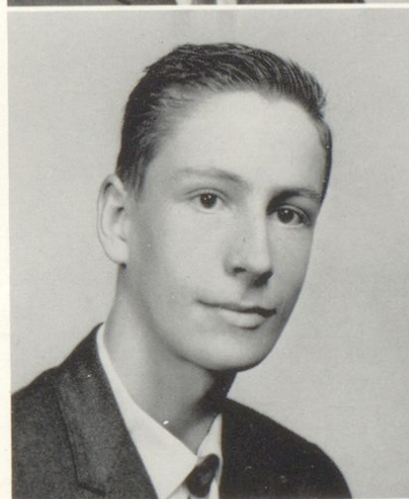


CLARENCE PALMER

Greenup, Kentucky . . . Science Club . . .
Journalism Club

NYOKA PALMER

Greenup, Kentucky . . . Beta Club . . .
Drama Club . . . Senior Play . . . Annual
Staff



RALPH POPLIN

Argillite, Kentucky . . . Pep Club . . .
4-H Club

WYNEMA PRINCE

Greenup, Kentucky . . . Drama Club . . .
Senior Play . . . Science Club . . . Library
Club . . . Annual Staff

The Stars



AMANDA REFFETT

Greenup, Kentucky . . . Senior Play . . .
Drama Club

NANCY REFFETT

Greenup, Kentucky . . . Annual Staff

LUCILLE RILEY

Wurtland, Kentucky . . . Beta Club . . .
DAR Award . . . Co-Ed-Y Club . . . Tri-
Hi-Y Club

LINDA LOU ROARK

Wurtland, Kentucky . . . 4-H Club . . .
Pep Club . . . Tri-Hi-Y Club



RUTH SARGENT (CONLEY)

Oldtown, Kentucky . . . Commerce Club
. . . Tri-Hi-Y Club . . . Drama Club . . .
Senior Play

KARLENE SEXTON

Wurtland, Kentucky . . . Senior Play . . .
Drama Club . . . Prom Queen . . . Annual
Staff . . . Library Club . . . Music Club

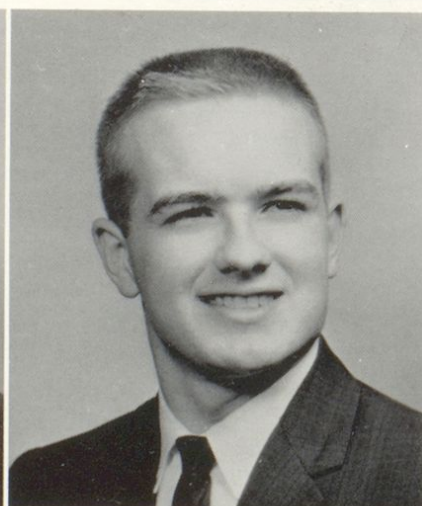
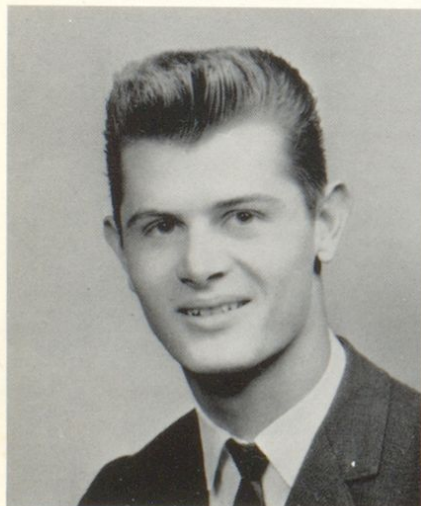


THEODORE STAFFORD

Wurtland, Kentucky . . . Beta Club . . .
Pep Club . . . Student Council . . . Science
Club . . . Football . . . Basketball . . .
Track

DAVID STAPP

Greenup, Kentucky . . . Football . . .
Basketball . . . Varsity Club





HASSEL TACKETT

Argillite, Kentucky

GALE VIRGIN

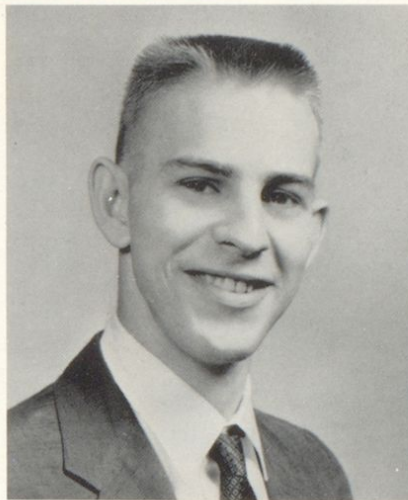
Greenup, Kentucky . . . Co-Ed-Y Club
 . . . 4-H . . . Basketball . . . Football
 . . . Track . . . Speech Play . . . Varsity
 Club

LARRY WICKER

Wurtland, Kentucky . . . Beta Club . . .
 Junior and Senior Play . . . Basketball . . .
 Track . . . Drama Club . . . FTA Club

NANCY WRIGHT

Wurtland, Kentucky . . . Paper Staff . . .
 Science Club . . . Tri-Hi-Y Club

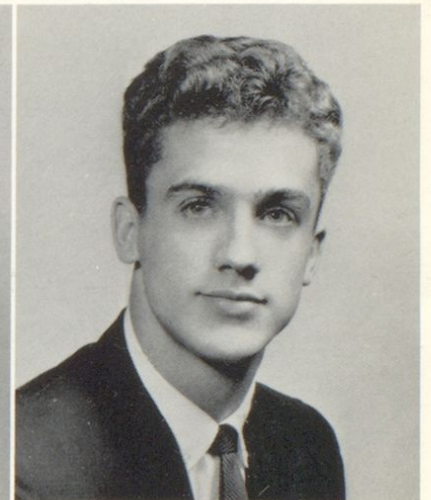


DANNY STEPHENS

Greenup, Kentucky . . . Senior Play . . .
 Drama Club . . . FFA . . . 4-H Club

ERCEL STEPHENS

Grayson, Kentucky



RICHARD WITTEN

Wurtland, Kentucky . . . Basketball . . .
 Football . . . Track . . . Beta Club . . .
 Senior Play . . . Drama Club . . . Science
 Club





SUMMER SCHOOL GRADUATES

DOUGLAS ADKINS

Greenup, Kentucky

KAYE ADKINS

Greenup, Kentucky

LLOYD BONZO

Greenup, Kentucky . . . Football

LOWELL DUNCAN

Greenup, Kentucky

LARRY MELVIN

Greenup, Kentucky . . . Football

ANNA McDANIELS

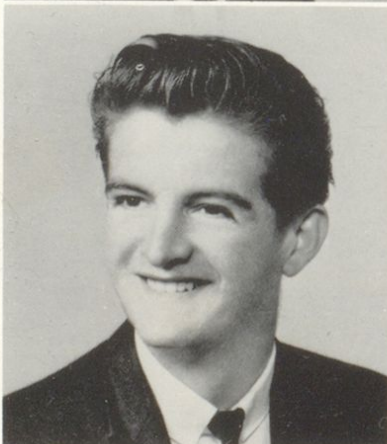
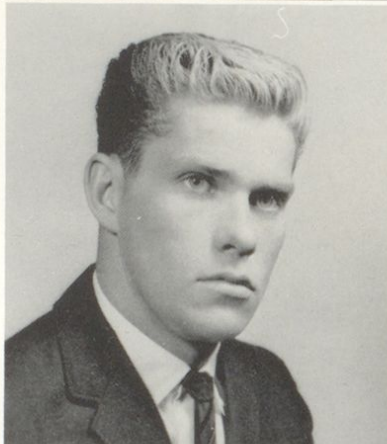
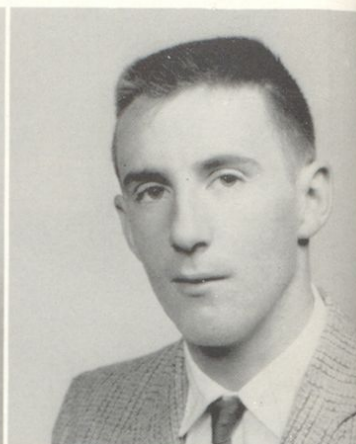
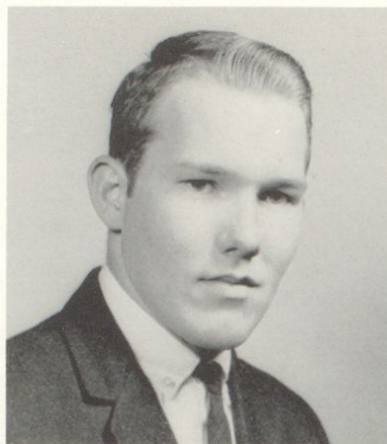
Oldtown, Kentucky

JOHNNY SPARKS

Flatwoods, Kentucky

LARRY TACKETT

Wurtland, Kentucky

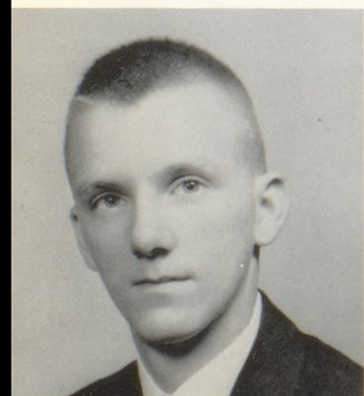


TERRY TACKETT

Wurtland, Kentucky

RALPH VIRGIN

Oldtown, Kentucky . . . Basketball



Beauty as we see it is indescribable; what it is or what it means can never be said.

George Santayana

MOST BEAUTIFUL - MOST HANDSOME

Karleen Sexton

Gale Virgin



Kitty Melvin

Richard Witten

NEATEST



CLASS OFFICERS

President - - - - - FRANK BOSTICK
Vice President - - - - - ELLEN FOSTER
Secretary-Treasurer - - - - - MARY GRUBB

To famous men all the
earth is a sepulchre.

Simplicius



Promise is most
given when the
least is said

Sir John
Harrington

BEST ALL AROUND

Debbie Maggard
Eddie Maddox

The greater man the greater
courtesy

Samuel Johnson

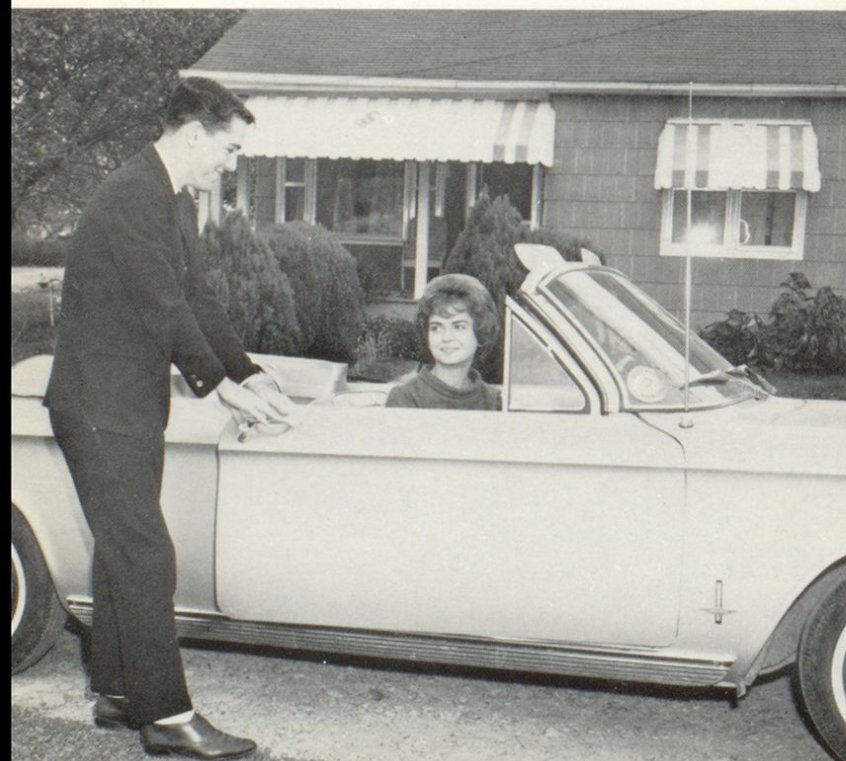
MOST COURTEOUS

Sue Blevins James Brown

Popularity is a crime from the
moment it is sought: it is only
a virtue where men have it
whether they will or no.

MOST POPULAR

Richard Witten Debbie Maggard





Donna Fraley Steve Holt

MOST STUDIOUS

Studious to please, yet not ashamed to fail.
Samuel Johnson



Nancy Reffett James Brown

FRIENDLIEST

There is no greater bane to friendship than
adulation; fawn and flattery.
Cicero



"D. A. R."
Lucille Riley



VALEDICTORIAN - Steve Holt
SALUTATORIAN - O'Donna Fraley



WITTIEST

Though this may be play to you, 'Tis death to us.

Roger L'Estrange

Ellen Foster
Curt Fletcher

MOST DEPENDABLE

. . . we are all dependant
on one another . . .

George Bernard Shaw

Mary Grubb
James Brown



MOST LIKELY TO SUCCEED

Success depends on three things: who says it, what it says, how he says it; and of these three things, what he says is the least important.

John Morley

Donna Fraley
Steve Holt



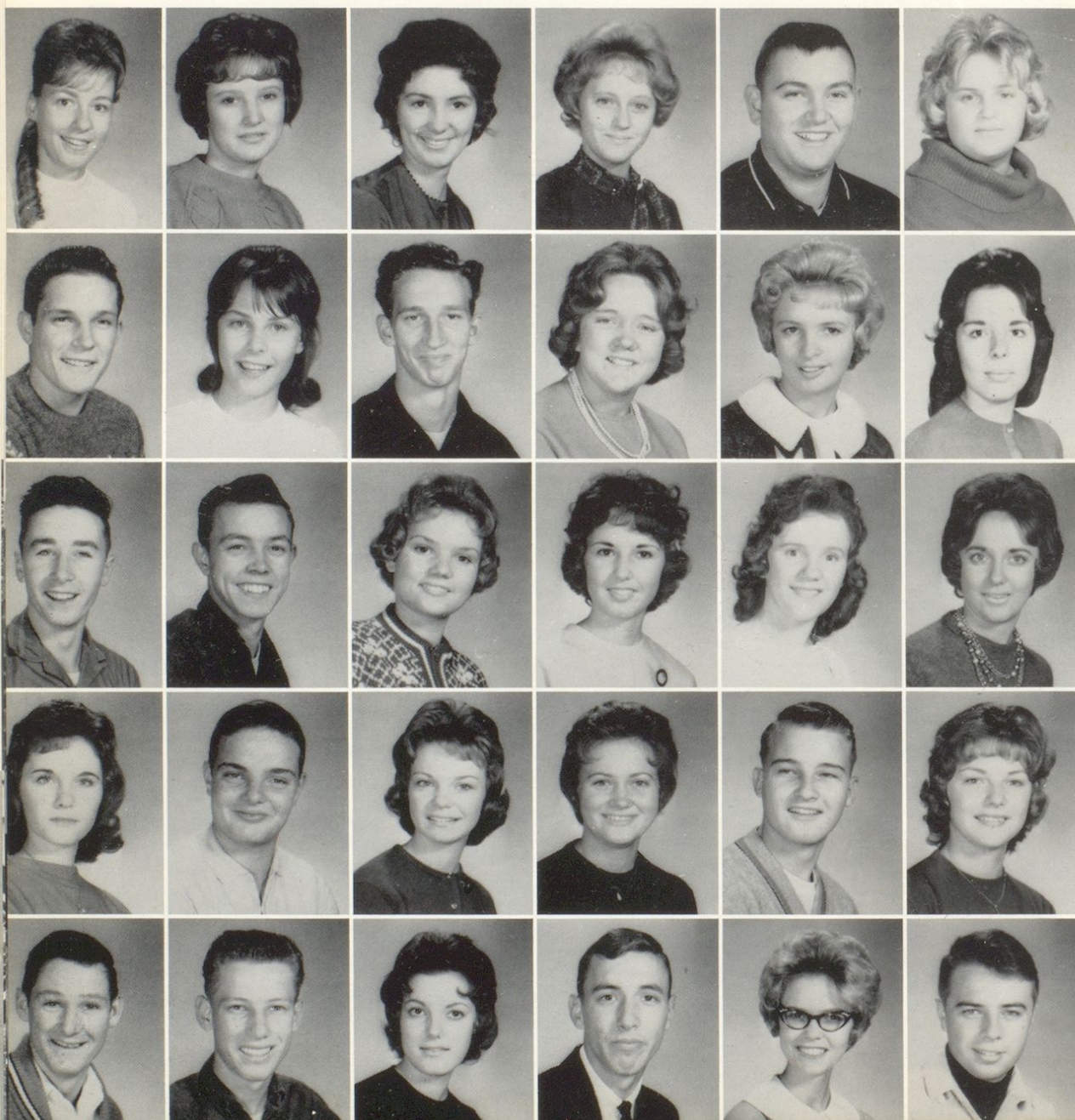


Junior Academic

WAYNE ROSE - SANDRA ADAMS

President -
 Pat Crum
 Vice President -
 Gayle Carpenter
 Secretary -
 Bernice Boyles
 Treasurer -
 Larry Melvin

The Understudies



Abey, Marilyn Sue
 Adams, Sandra
 Adkins, Carolyn
 Adkins, Doretha
 Adkins, Michal
 Baldrige, Neita

Bear, Phillip
 Belford, Doretha
 Billups, Carl
 Blythe, Laura
 Bradley, Janet
 Boyles, Bernice

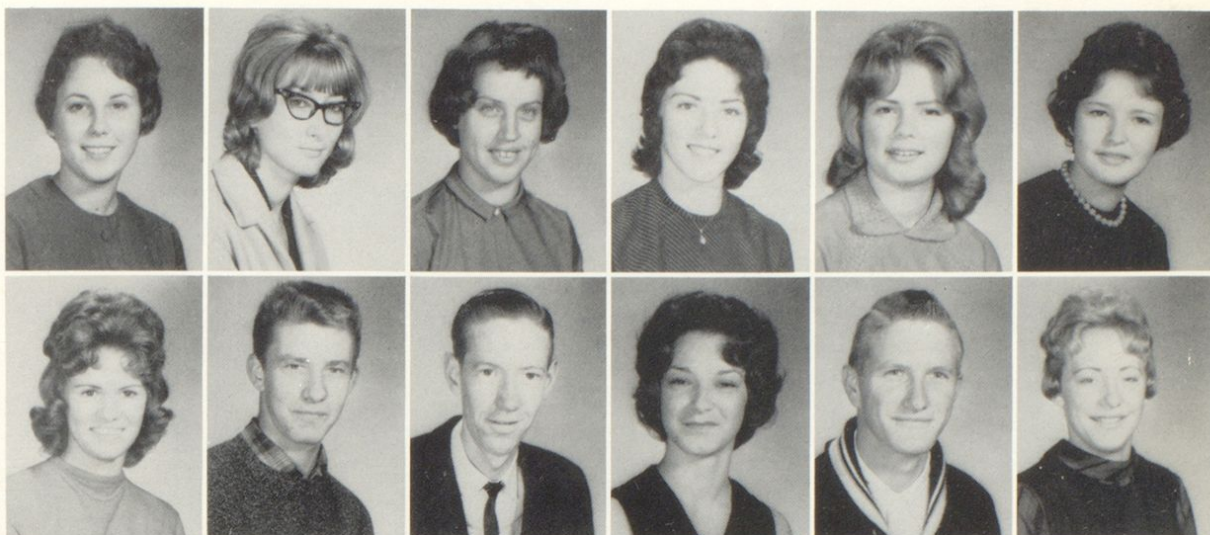
Brown, Bobby
 Brown, Danny
 Brown, Priscilla
 Brown, Tuenica
 Burton, Sybil
 Bush, Ann

Byrd, Rosa
 Callehan, Tommy
 Carpenter, Gayle
 Carr, Andrea
 Carr, Larry
 Carter, Mary

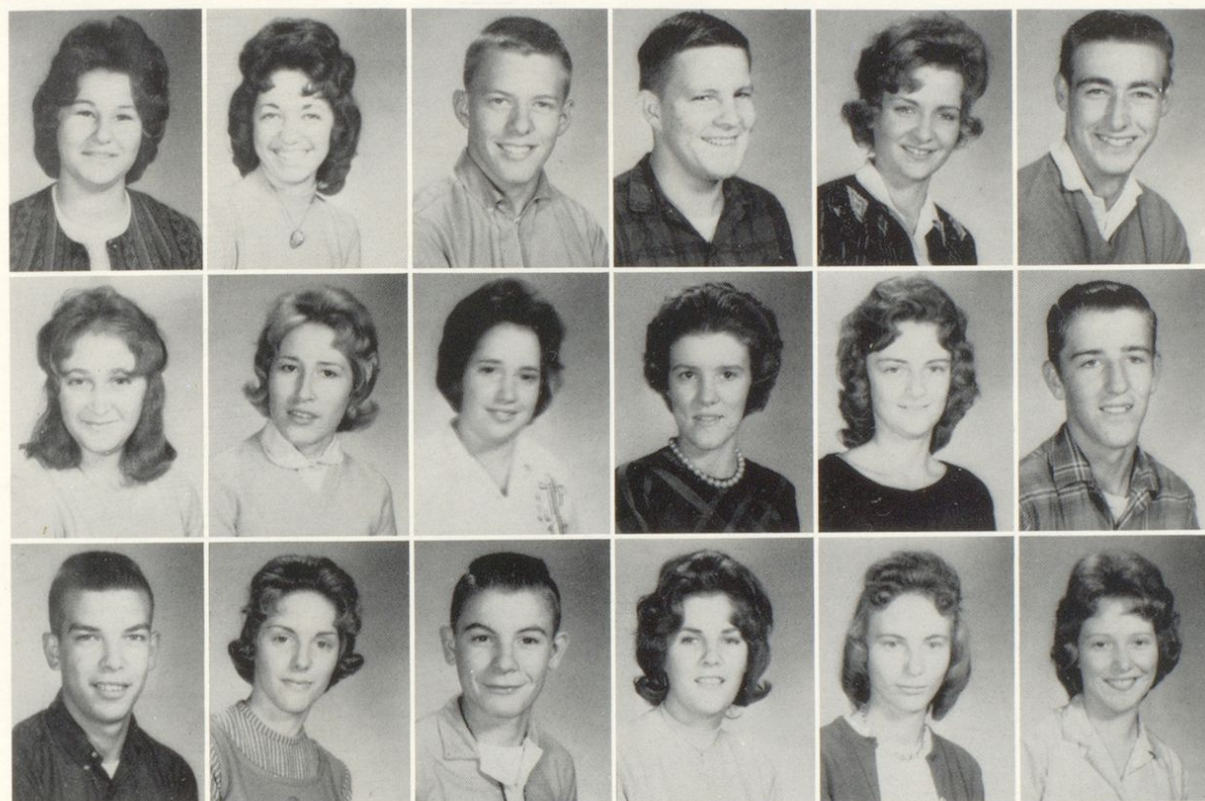
Coburn, Roger
 Cochran, Tommy
 Collins, Rosemary
 Conley, Charles
 Crisp, Pamela
 Crum, Pat

Understudies

Davis, Carolyn
Dillow, Sandra
Dillow, Nora
Enyart, Donna
Enyart, Paula
Flannery, Louise



Floyd, Carolyn
Foster, Alex
Gibson, Thomas
Gillispie, Evelyn
Gillum, Edgar
Greene, Diane

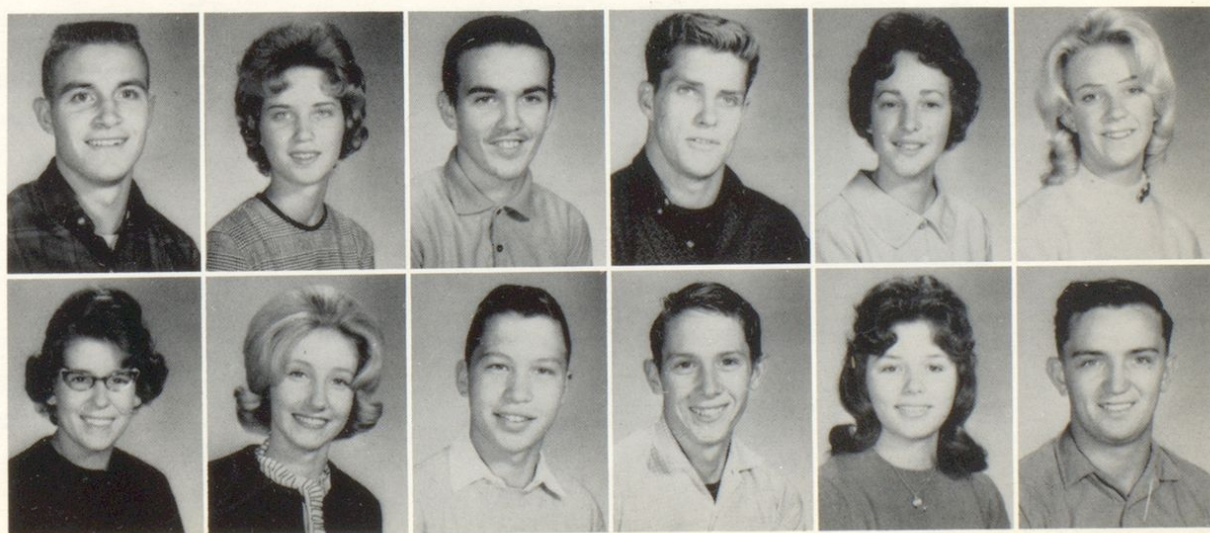


Gullett, Betty
Hammond, Carolyn
Hayes, Bobby
Hogge, Michael
Hopson, Laura
Horsely, Craig

Huffman, Linda
Ingles, Mary M.
Jones, Ellen
Justice, Molly
Keeton, Anita
Lefebura, Marvin

Logan, Bronston
McBrayer, Linda
Marshall, Robert
May, Sandra
Meadows, Nora
Meadows, Linda

Meadows, Oscar
Meeks, Connie
Melvin, Jesse
Melvin, Larry
Messer, Annette
Mowery, Sherry



Mullins, Linda
Nelson, Sandra
Nethercutt, Ronnie
Nichols, Clifford
Oliver, Judy
Osborne, Eddie

Understudies



Poplin, David
Ramey, Zola
Reed, Dick
Reffett, Alice
Rister, Melvin
Roar, Beverly

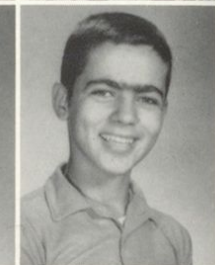


Roark, Lora
Rose, Wayne
Salyers, Doretha
Sargent, Vera
Sizemore, Mack
Sizemore, Sammy

Sloan, Joann
Smith, Evelyn
Smith, Karen
Sparks, Johnny
Spears, Terry
Spradlin, Kenneth



Stephens, Johnny
Stephens, Ricca
Stephens, Joe
Stiltner, Wayne
Taylor, Robert
Temple, Roger



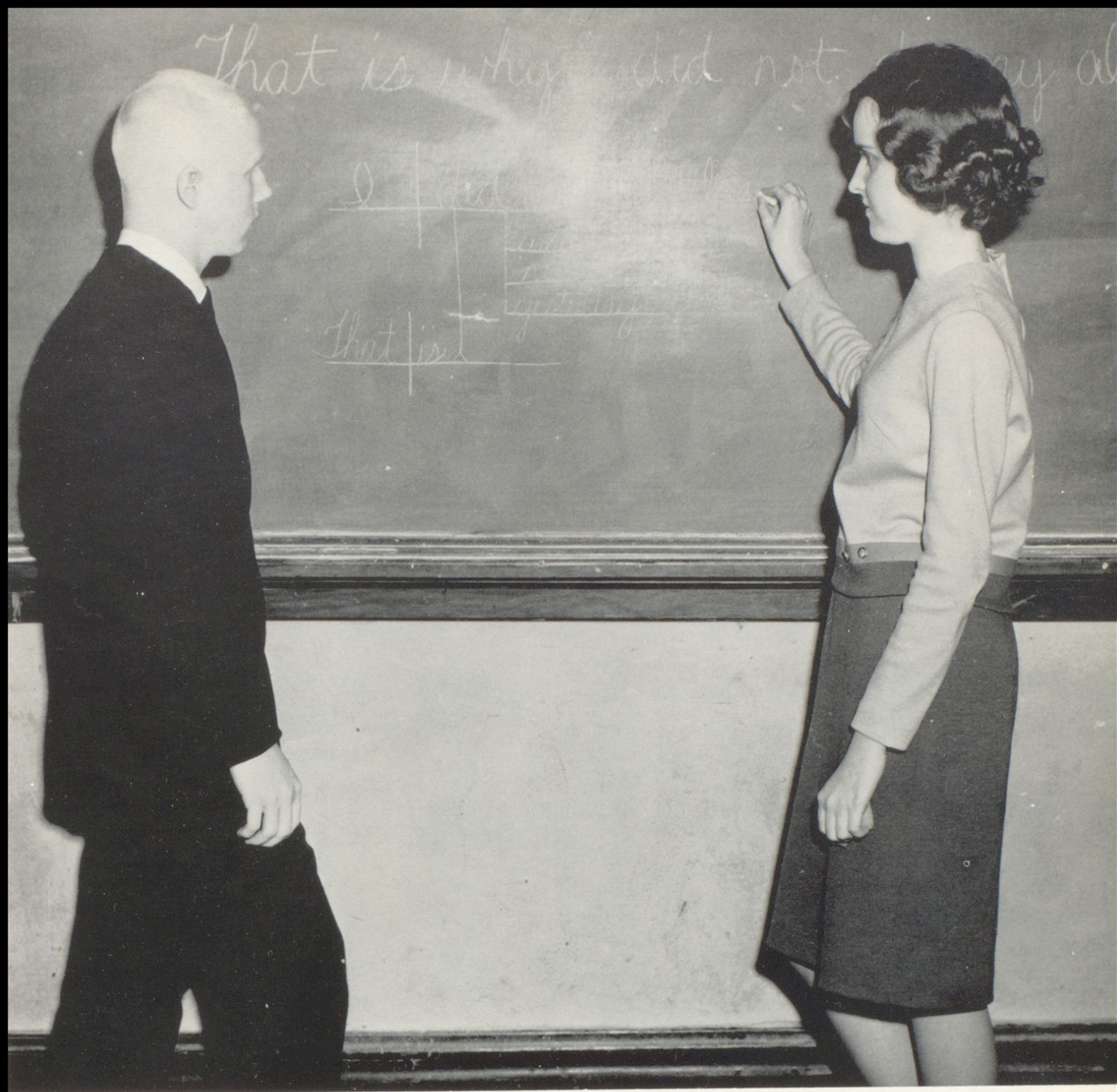
Traylor, Carol
Triplett, Harold
Virgin, Linda
Virgin, Ralph
Walker, Ralph
Warren, Virginia



Wells, Glenn
Wells, Russell
Waddell, Kaye



Yates, Joyce
Yates, Roger
Young, Judy



. . . all men desire happiness, and happiness is gained by a use of the things of life,
and the right use of them, and good fortune in the use of them, is given knowledge. . .

Plato

Sophomore Academic

MIKE BARTRAM - RITA BUSH

President -
Doris Evans

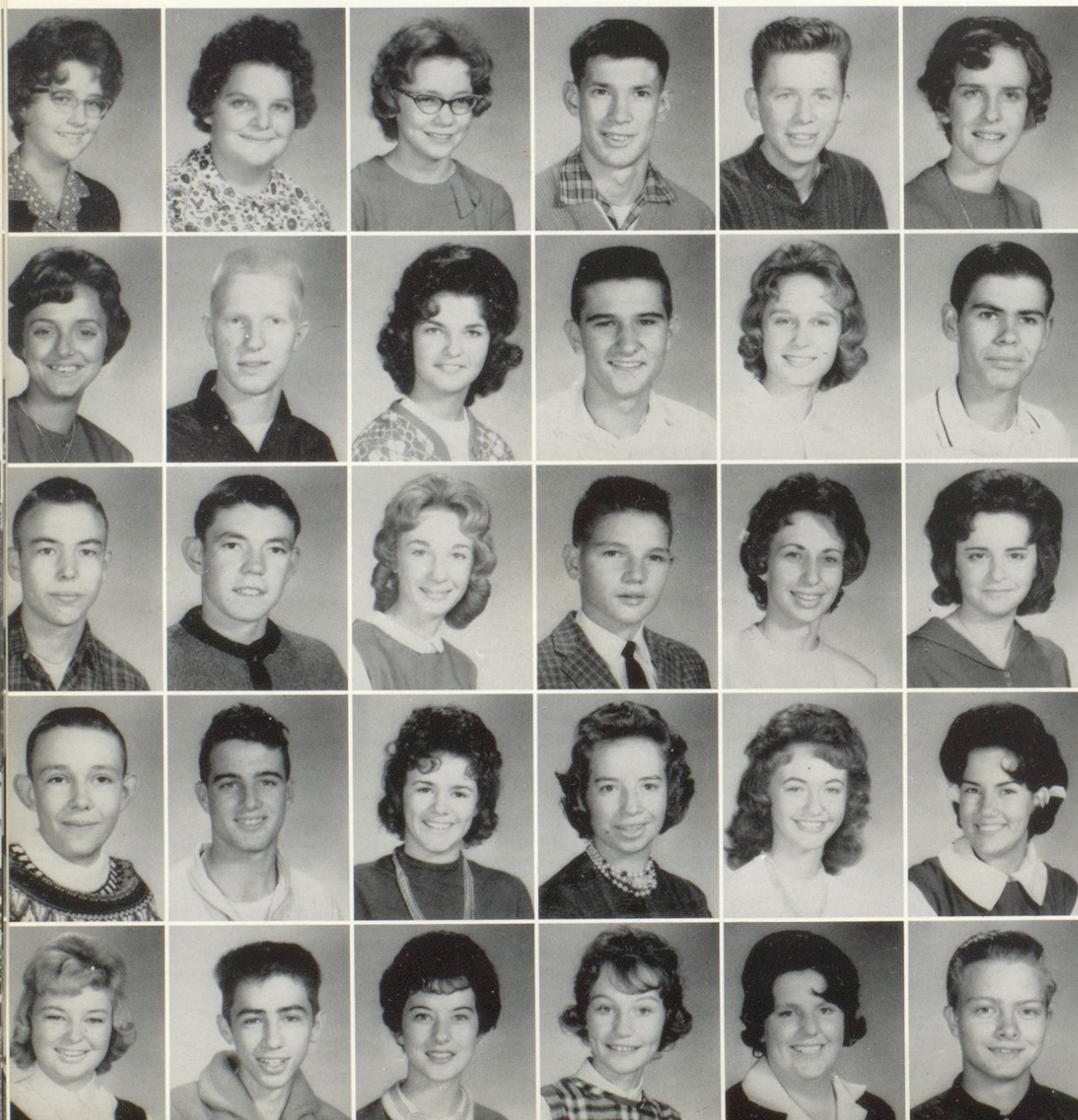
Vice President -
Joe Harris

Secretary-Treasurer -
Pamela Moore

Reporter -
Charles Grizzle



Bit Players



Deborah Adams
Elna Adams
Ida Adams
Charles Adkins
Amos Allen
Rita Bush

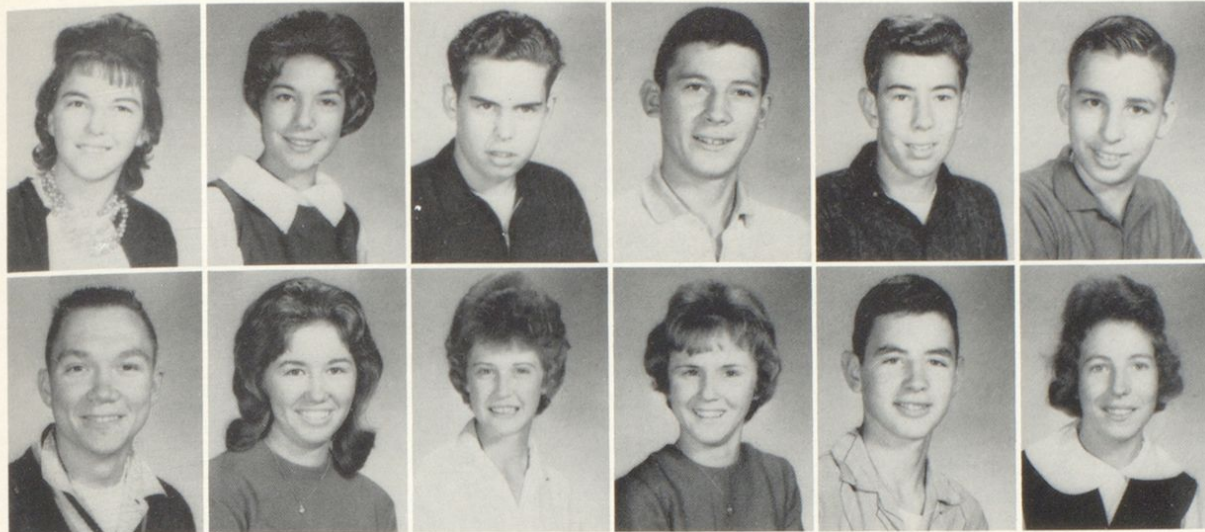
Pam Ball
Mike Bartrom
Sharon Bartrom
David Bays
Patricia Bear
Harry Boggs

Russell Bowling
Danny Boyd
Reva Brewer
Marvin Brown
Connie Burchwell
Connie Crum

Jerry Callihan
Robert Callihan
Sandra Callihan
Betty Campbell
Bonnie Caudill
Carla Cavin

Ethel Clark
Gerald Claxon
Kay Claxon
Carla Coburn
Loretta Coburn
William Cochran

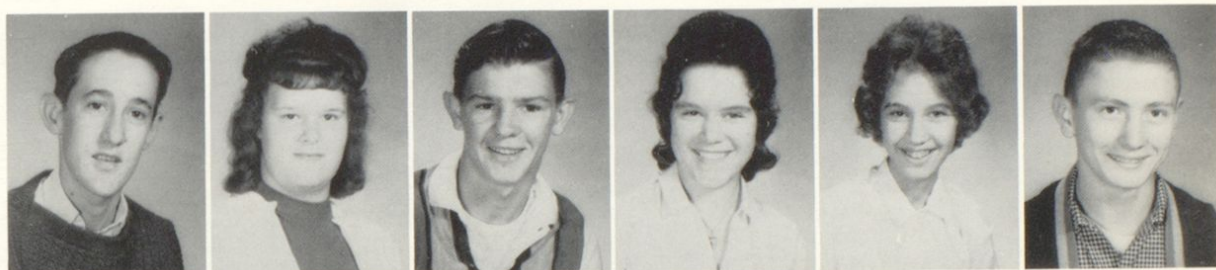
Bit Players



Lena Coffey
Linda Collier
Johnny Conley
William Cox
Mike Cremeans
John Duty

Dehart, Hubert
Evans, Doris
Evans, Joan
Felty, Judy
Fletcher, Robert
Garvin, Mary

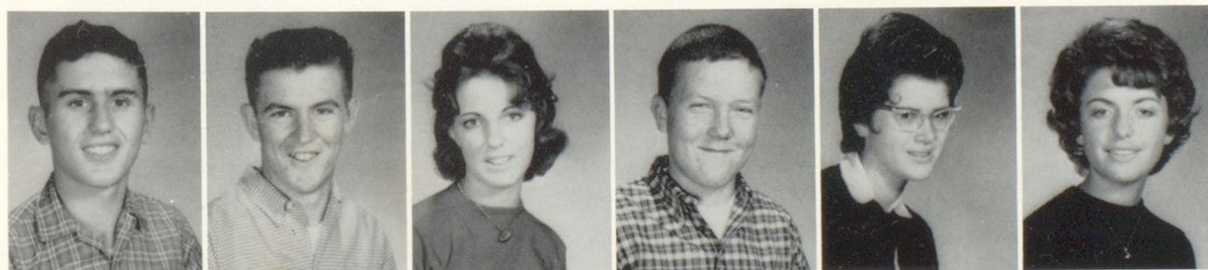
James Gibson
Gloria Gillum
Charles Griffith
Shirley Griffith
Wanda Griffith
Charles Grizzle



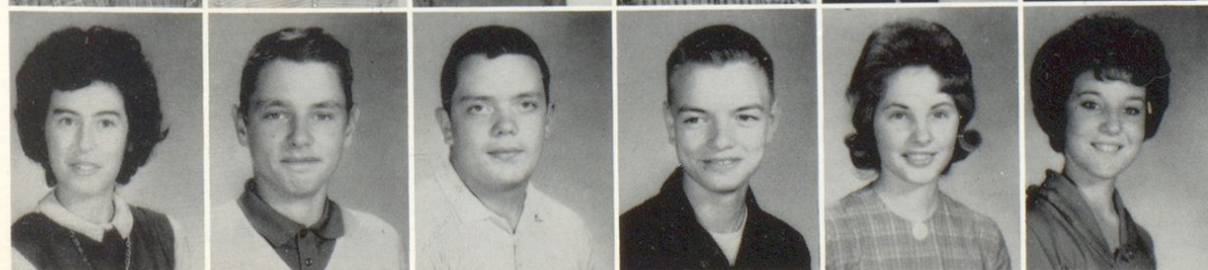
Donita Grubb
Brenda Hall
Norene Hamilton
Mary Hancock
Esther Harris
Joseph Harris



Patrica Harris
Linda Heaberlin
Gene Hern
Ramona Jacobs
John Jenkins
Charles Johnson

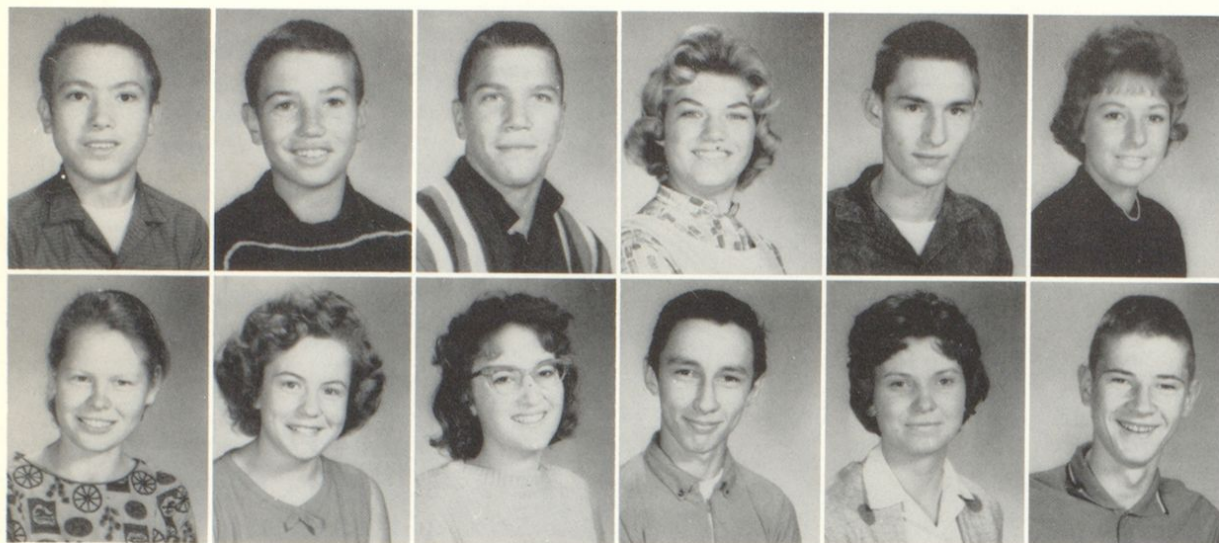


Jonathan Johnson
Michael Johnson
Allene Justice
Jerry Kitchen
Charlotte Leonhart
Rebecca Little



Vicki Lowe
Kenneth Madden
Norman Maggard
Tim Maynard
Regina McBrayer
Ada Sue McComas

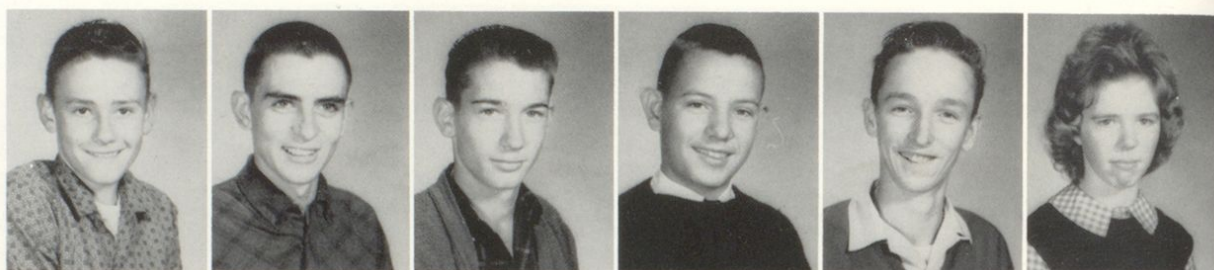
Bit Players



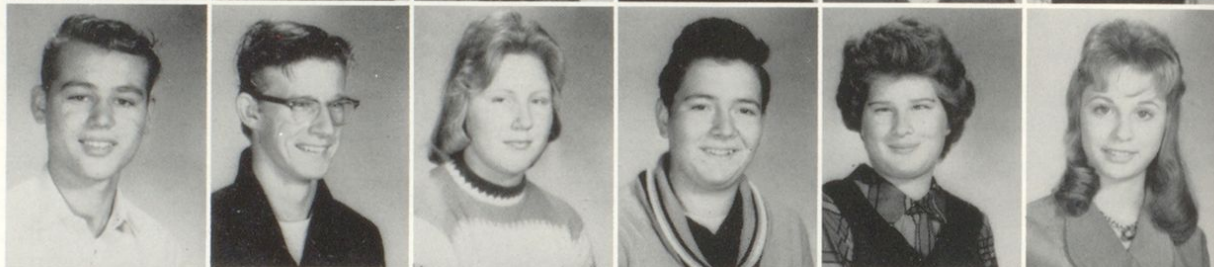
Hubert McDaniels
James McReynolds
David Meeks
Brenda Melvin
Philip Montgomery
Pamela Moore

Minnie Morgan
Betty Morman
Marilyn Musser
James Palmer
Linda Pennington
John Price

Raymond Prince
Raymond Redmond
Donald Rister
James Roark
Lindsey Robinson
Angela Ross



Herman Salyers
Oscar Sigler
Hazel Smith
John Smith
Pamela Smith
Patricia Stephens



Donna Stevens
Chris Stewart
Charlene Sturgill
Donald Sullivan
Wilma Sullivan
Jessica Tackett



Martha Taylor
Karen Thornsbury
Wyvetta Todd
Brenda Toney
Glenn Watson
Kay Welch



Roger Whitehead
Timothy Wilson
Paul Witten
Nancy Womack
Joe Woods
Judy Young

Tryouts



*Freshman
Academic*

BOBBIE ROSS and GARY CHAFINS

Tryouts



CLASS OFFICERS

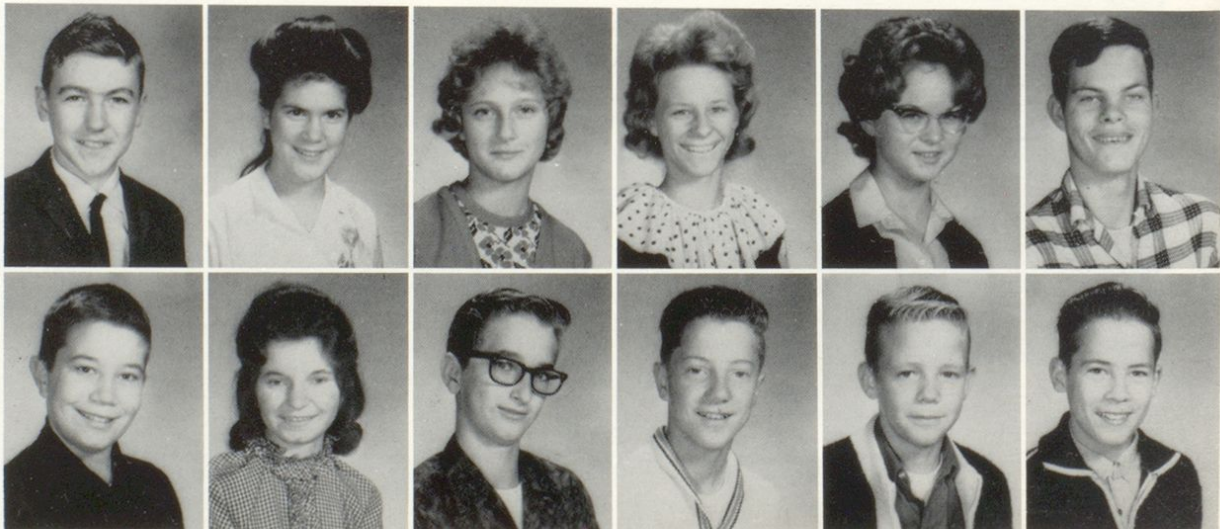
Johnny Johnson - - - - - President
 Carolyn Oliver - - - - - Secretary-Treasurer
 Toni Eastham - - - - - Vice President

CLASS MOTTO

Just as the twig is bent the tree's inclined.

Alexander Pope

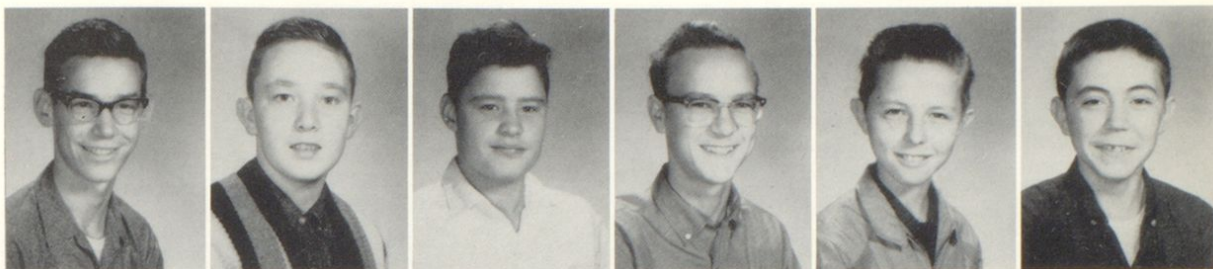
Abdon, Marshall
 Adkins, Alice
 Adkins, Bonita
 Adkins, Sandy
 Akers, Anita
 Baldrige, Emory



Baldrige, James
 Baldrige, Louise
 Ball, David
 Ball, Kenny
 Barney, Roger
 Bates, Mike

Tryouts

Belford, Dallas
Belew, Gary
Bently, James
Binion, Gary
Blevins, Roy
Boyd, Harry



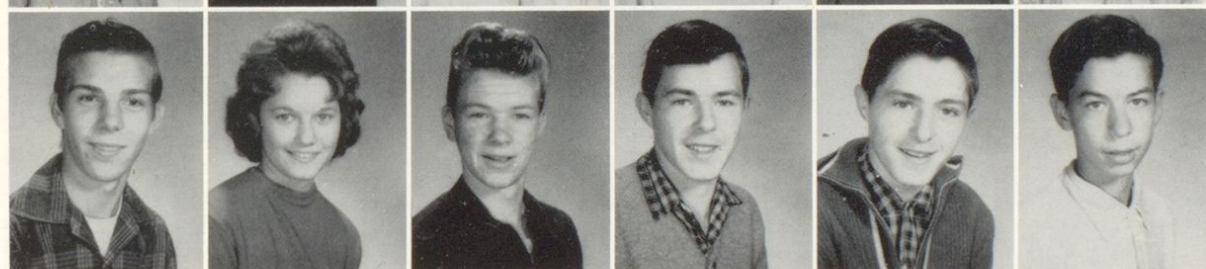
Bradbury, David
Bradley, Julia
Barber, Brenda
Brown, Darrell
Brown, Janice
Brown, Tommy



Bucsh, Glenn Ann
Burks, Bonnie
Burns, Sandra
Burton, Eldean
Byers, Jerry
Callihan, Mack



Cantrell, Versa
Clark, Carol
Carter, Terry
Carver, Sharon
Chaffins, Wanda
Chafins, Gary



Chapman, Bassel
Church, Ruth
Clark, Billy
Claxon, Charles
Claxon, James
Coffee, David

Coffey, Curtis
Colegrove, Beulah
Collins, Delbert
Collins, Kelley
Collins, Ruby
Corns, Gayle



Conley, Delbert
Conley, Shelia
Craft, Danny
Cross, Douglas
Crum, Ruth
Curry, Betty



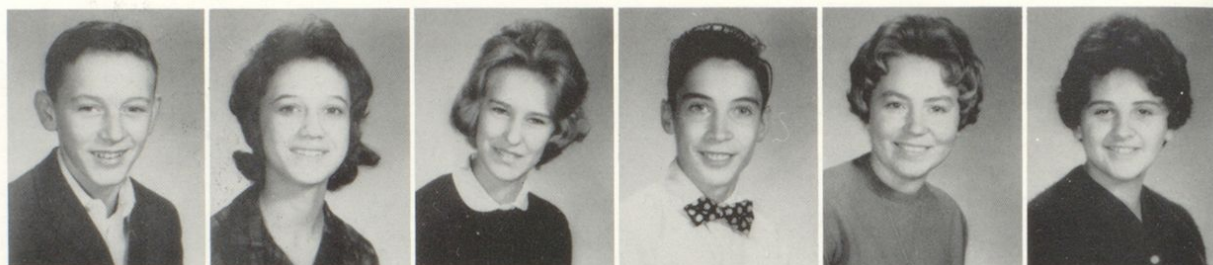
Tryouts



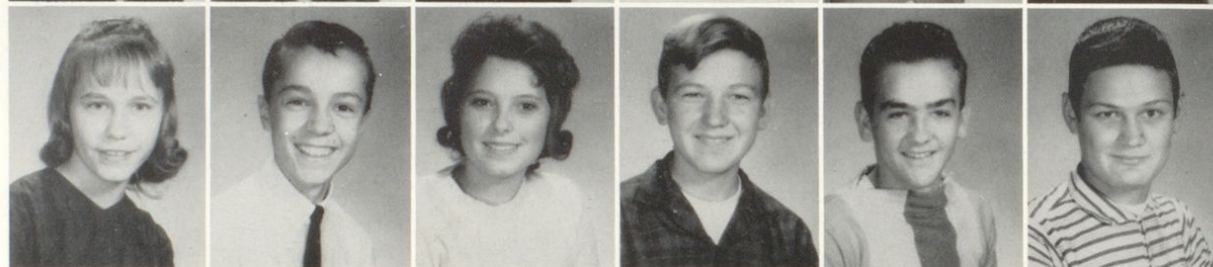
Dalton, David
DeHart, MaDonna
Dillow, Steve
Douglas, Connie
Douglas, Joyce
Dummitt, Pamela

Eastham, Steve
Eastham, Toni
Fraley, Danny
Fraley, Lanny
Gambol, Glenn
Grayhouse, Robert

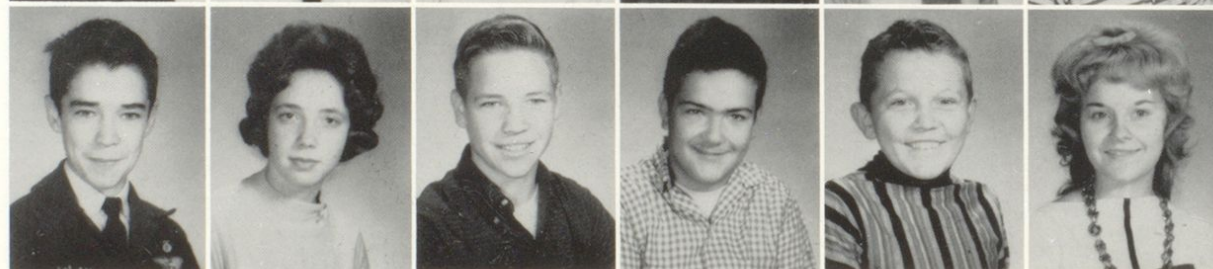
Griffith, Elmer
Griffith, Kay
Gullett, Bessie
Hackworth, Ralph
Haight, Linda
Hamilton, Veldean



Hall, Imogene
Hall, James
Hall, Ruby
Hamilton, Emmitt
Hamilton, Evener
Hamilton, Leonard



Hamilton, Paul
Hamilton, Rae
Hembrick, Roger
Hancock, Mike
Harris, Jimmy
Harris, Mary



Hennecke, Paul
Hern, Gladys
Hicks, Roger
Holt, Paula
Howard, Jerry
Horsley, Cathleen



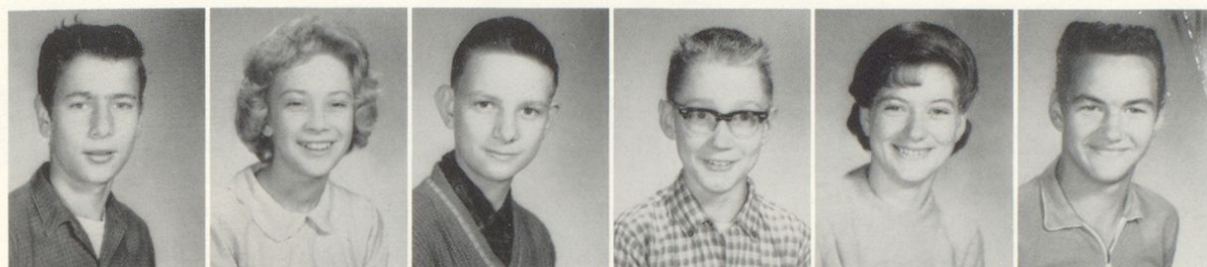
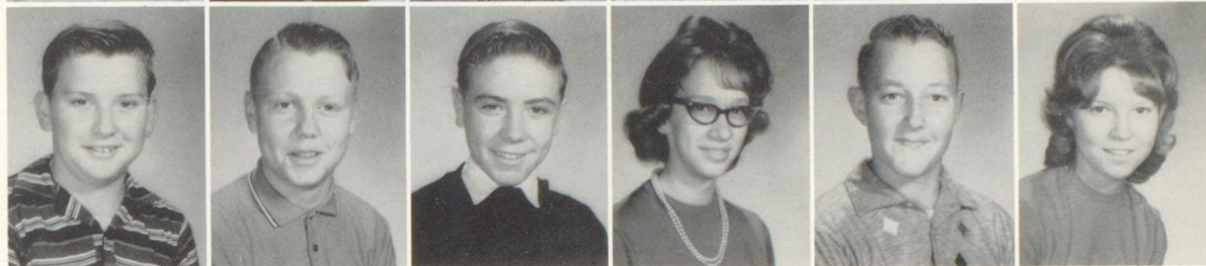
Horsley, Helen
Horsley, Ronald
Jacobs, Sandra
Johnson, Mike
Johnson, Tommy
Justice, Jimmy

Tryouts

Justice, Johnna
Justice Phyllis
Kee, Patsy
Kitchen, Carl
Kiser, Glenora
Large, Cecil



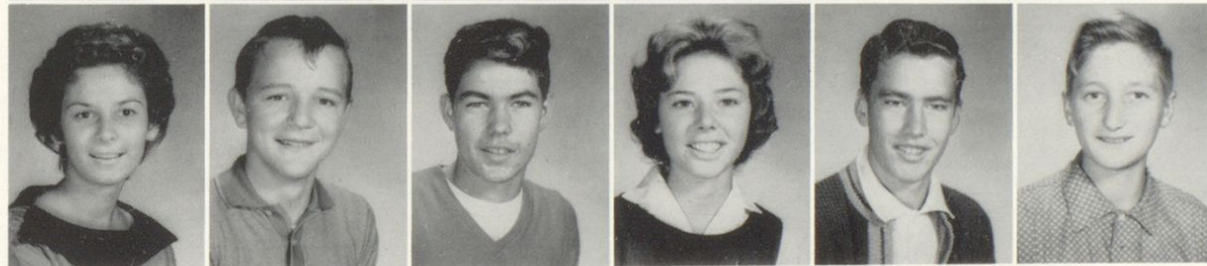
Leadingham, Danny
Lilly, David
Litteral, Jim
Madden, Ruth
Martin, Earnest
Marshall, Leona



May, Danny
McAllister, Claudia
McCarty, Ronald
McCarty, Sheran
McDowell, Bobbi
Meade, Jeff

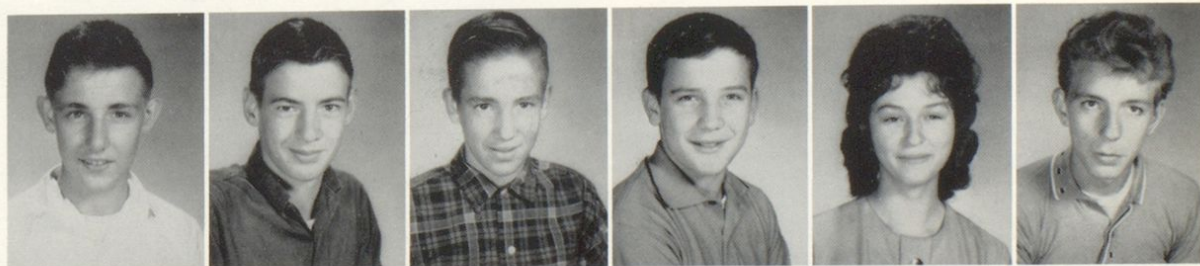


Melvin, Lawrence
Melvin, Regina
Messer, Jewell
Miller, John
Mullins, Kenny
Moore, Jimmy



Moore, Pamela
Morgan, Raymond
Morris, Danny
Morrison, Linda
Neace, Jerry
Neace, Arlis

Nelson, Stacy
Nickols, Gary
Nickols, Glenn
Oakes, Billy
Oliver, Carolyn
Osborne, Paul



Osborne, Roy
Osborne, Ronnie
Patton, Jimmy
Pennington, Ann
Pierce, Connie
Potter, Robert



Tryouts

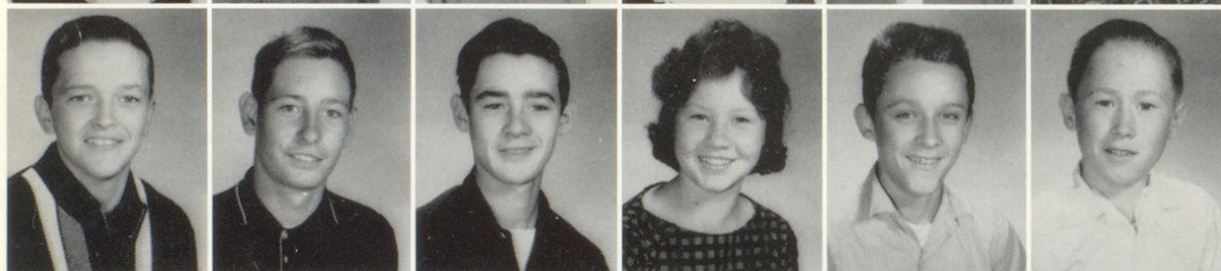
Price, James
Ramey, Edna
Rayburn, Bobby
Redmond, Ruth Ann
Reed, Junior
Reffett, Betty



Reffett, Gary
Rhoden, Kenneth
Riffe, William
Riley, Freda
Roar, Loretta
Roar, Regina



Roark, Rebecca
Robinson, Desond
Ross, Barbara
Russell, Barbara
Sizemore, Loretta
Sizemore, Naoma



Skaggs, Howard
Skeens, Donald
Smith, A. C.
Smith, Carolyn
Smith, Mike
Smith, Odith



Smith, Opal
Snoddy, Bobby
Sparks, Joneta
Spears, Shannon
Stephens, Frances
Stepp, Ann

Stiltner, Romantha
Stewart, Claude
Sullivan, Thelma
Tackett, Esther
Traylor, David
Wells, Ralph



Wicker, Danny
Wicker, Linda
Williams, Libby
Woods, Danny
Wright, Brenda
Yates, Ray



The Production

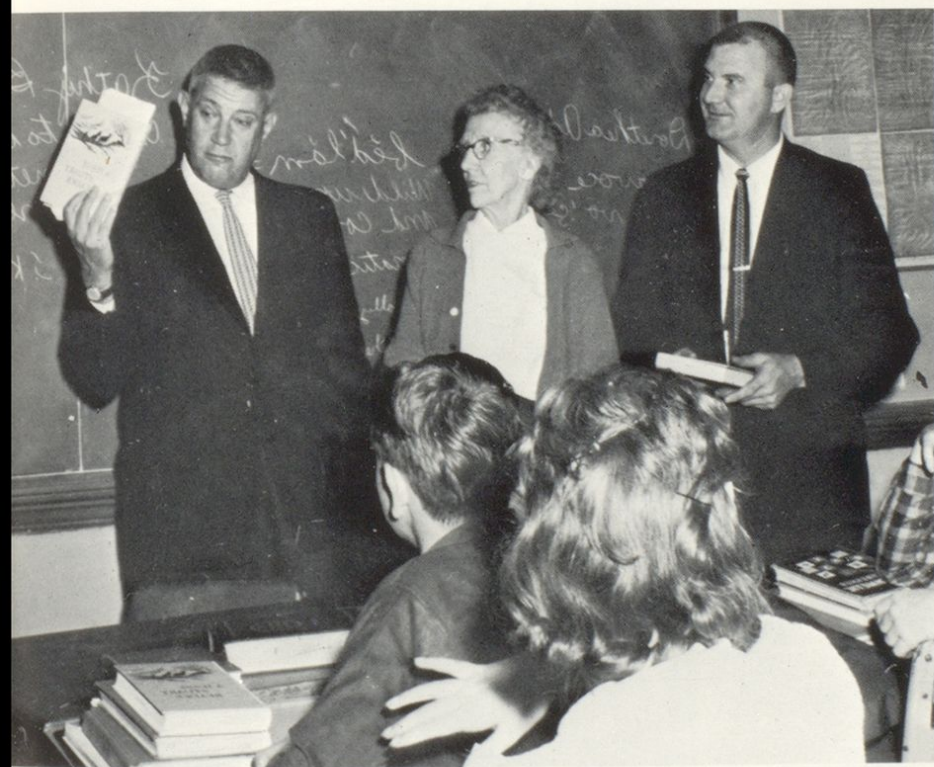
Academic



"When the bell rings everyone rushes to the next class."



Miss Clara Baker stops by the door to autograph the yearbook for Bonnie Caudill.



Mrs. Lutie Nickel's ninth grade English class was visited by the noted Jesse Stuart - he autographed books for them.

The High School Band, the Warrior Band, is an organization consisting of students from grades seven through twelve. It offers pupil instruction, knowledge of music, enjoyment of music, and a host of activities, which includes clinics and ensembles for member participation.

The band also provides entertainment for the surrounding community. Every season, the band performs, entertaining with two concerts. The first being the Mid-Winter and the second is the spring Formal.

During football season the band exhibits a variety of shows on the football field--marching into effective formations and displaying intricate precision drills.

Each year our band attends a contest at the Morehead State College, where they are judged on playing ability. For the school year of '63-'64, the band received an excellent rating. The members of the band have gained recognition as excellent musicians and marchers. They received such honors as:

Second place in the Greenup County Fair Parade; participated in the Kentucky Derby Parade; participated in the Governors Inauguration Parade and have received invitations to other noted parades.

In October, 1963, the band traveled to Lexington, Kentucky, to compete in the Kentucky Invitational Band Tournament sponsored by the Lions Club. The Warrior Band won first place in the Cardinal Division and was presented a beautiful trophy.

Pictured with the trophy is Mr. Billy Watson, Band Director, for whom his students, both past and present, hold unlimited gratitude and praise for his endless efforts to increase the interest of the pupils and thereby increase the status of the band.

--Debbie Maggard--
Head Majorette





"When the WARRIORS go marching in"

Leading the Band are our four lovely majorettes



From Left to Right: Janet Bradley, Donna Enyart, Mary Carter, and Debbie Maggard, Head Majorette



"DEBBIE "
Head Majorette



"DONNA "



"JANET "



"MARY"



FRONT ROW, left to right: Billy Watson, Director, Mary Carter, Donna Enyart, Jimmy Baldrige, Franklin Salyers, Roger Barney, Steve Little, Kenny Mullins, Ralph Walker, Shannon Spears, Janet Bradley, Debbie Maggard, Head Majorette; SECOND ROW, L. -R. Virginia Warren, Kirry Melvin, Linda Wicker, Kathy Holt, Bonita Adkins, Kathleen Walker, Diane Wilson, Rebecca Hayes, Vicki Crum, Debbie Lewis, Janet Large, Carla McDowell, Donna Rister, Linda Ison, Pam Ball, Rena Elswick, Toni Eastham, Elizabeth Williams; THIRD ROW, L. -R. Pat Crum, David Long, Tommy Stafford, Bruce Fritz, Lewis Baldrige, Bill May, Brenda Melvin, Pam Smith, Peggy Heaberlin, Billy Holt, Sammy Sparks, Linda Salyers, Karleen Sexton; FOURTH ROW, L. -R. Carol Clark, Vicki Tackett, Joe Cochran, Bobby Ramey, Kenny Ball, Rodney Nelson, Timmy Wilson, Billy Oakes, Rodney Stuart, Paul Witten, Danny Craft, Joan Maddox, and Bobby Hayes.