



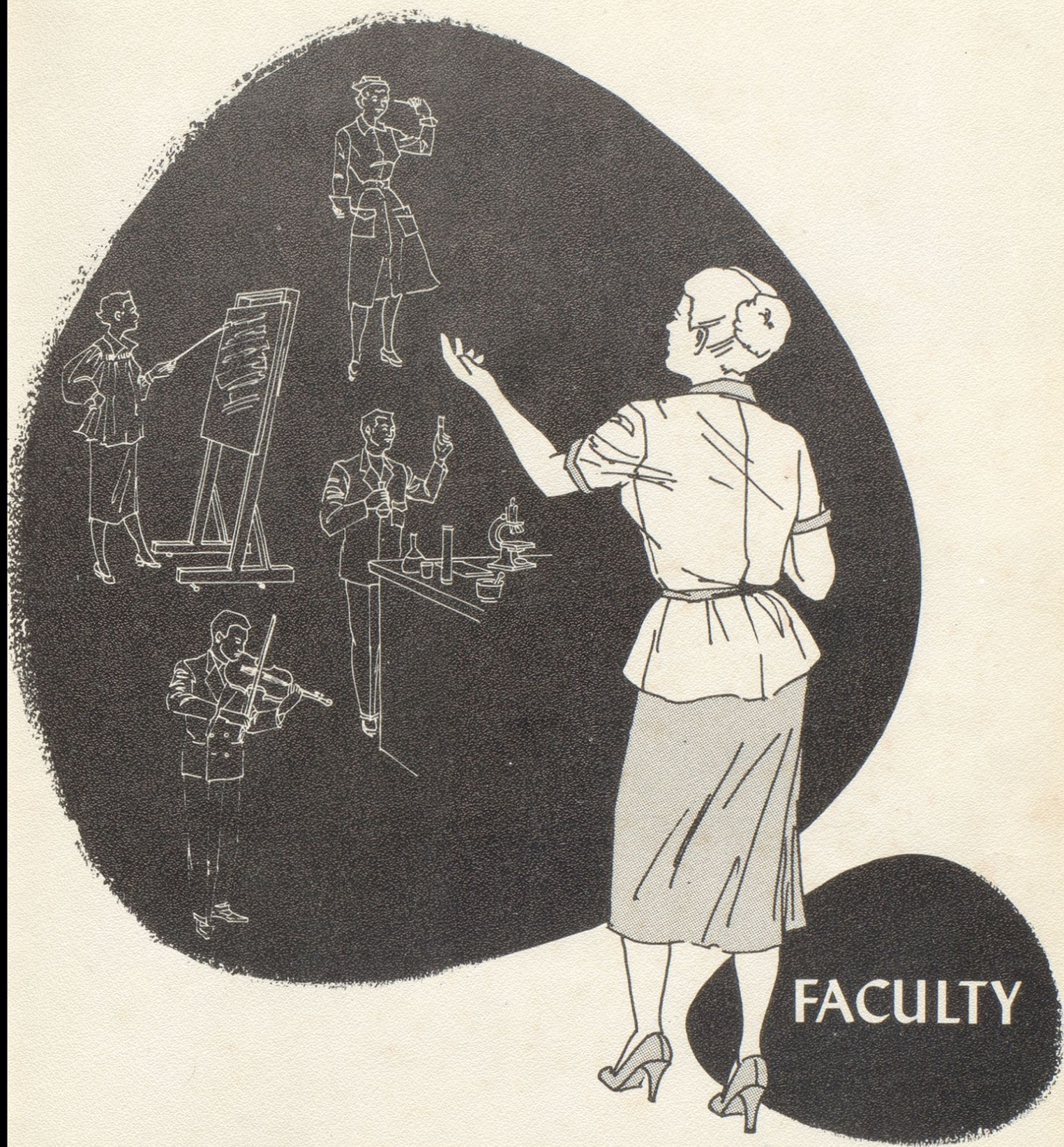
DEDICATION

Dedication



We, the class of 1954, are proud to dedicate this annual to our Sponsor, Mrs. Oscar Sammons, who has guided us through our last two and most vital years of school.

We hope this dedication will convey in part our appreciation for her patience, kindness, and personal interest in each of us.



Faculty



OSCAR BUSH--A. B.
Morehead State College



FLORIS W. LILES--A.B.
University Of Kentucky



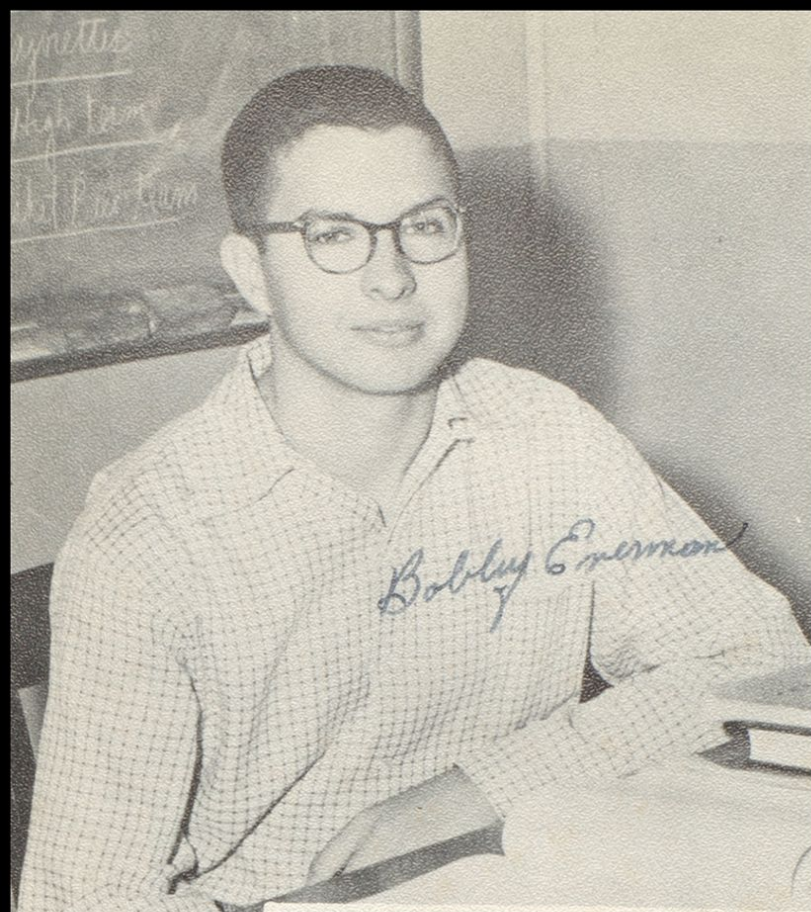
KATHRYN REED--B. S.
Morehead State College
University Of Cincinnati



ANN M. SAMMONS--A. B., M. S.
University Of Kentucky



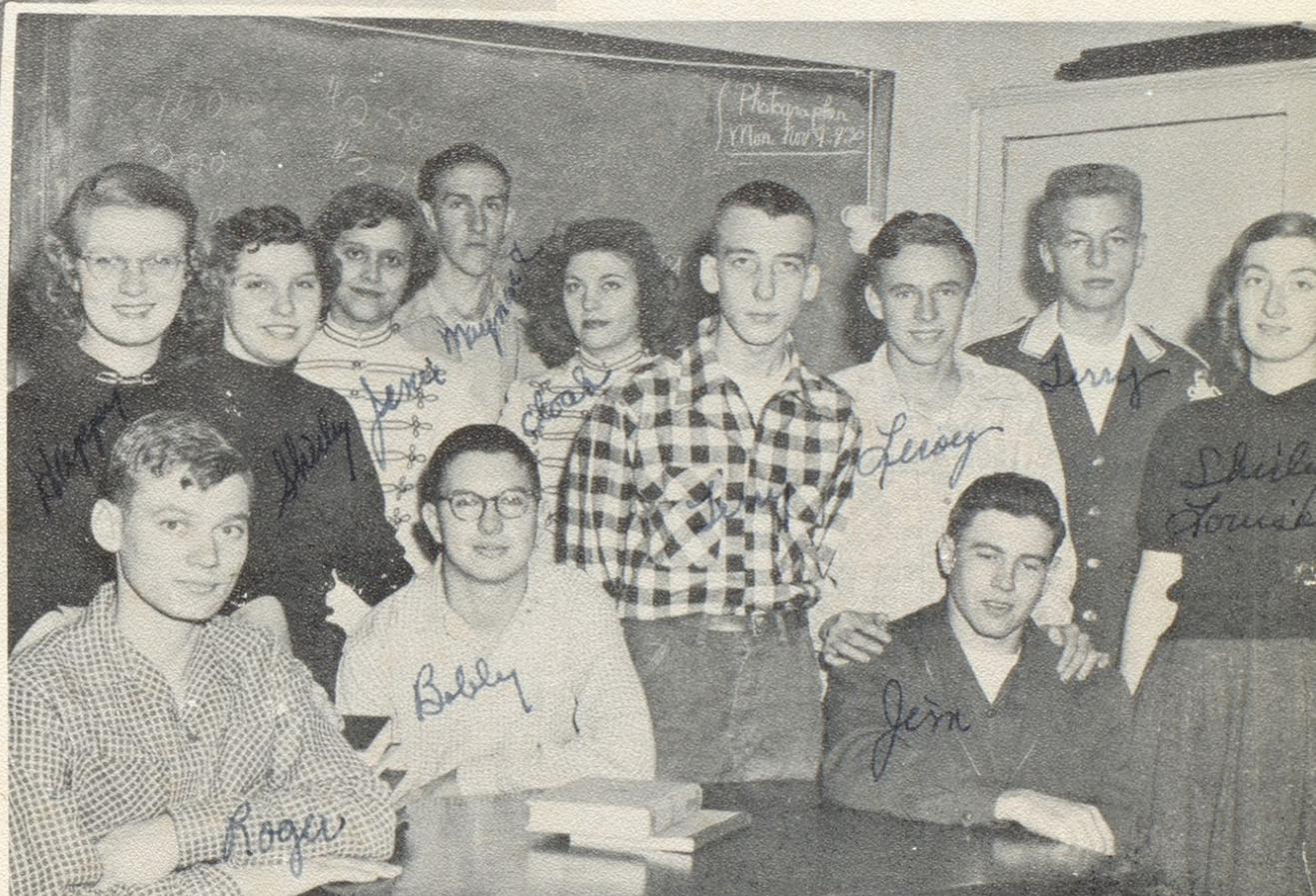
AGNES MILLER--B.S.
Morehead State College
Marshall College



A yearbook is the fondest and most treasured memory of a student's high school years. It reminds us of the teachers, classmates, activities, events, and sports which we knew and were a part of as students. It is no small task to plan and put together a yearbook, as any Senior can tell you, but we believe the result--that of creating a book which will be the storehouse of memories for us in years to come--to be well worth the effort.

Bob Everman

Editor-in-Chief



Annual Staff

FIRST ROW: Roger Johnson, Bob Everman, Terry Doran, Jim Coffee.
 SECOND ROW: Mary Sparks, Shirley Potter, Genie Cales, Maynard Womack, Cloah Hall, Leroy Cremeans, Terry McBrayer, Louise Potter.



Superintendent's Message

The Senior Class of 1954 may be justly proud of many achievements successfully completed.

It seems that this class has distinguished itself by attaining greater individual participation in class activities. A larger prop-

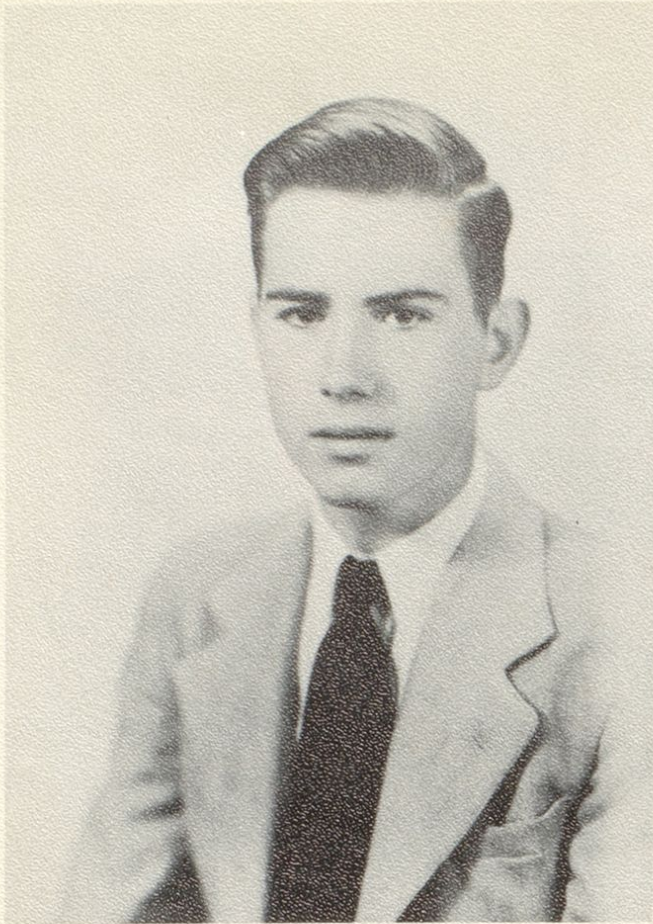


Senior Class Officers

President James Archey

Vice-President Russell Messer

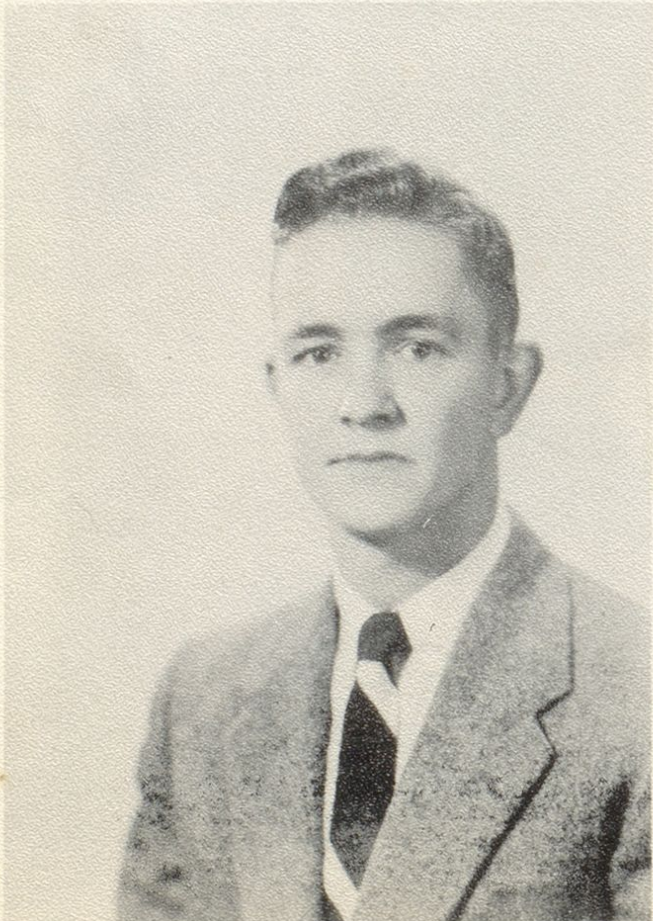
Secretary Louise Potter



RUSSELL MESSER

Basketball	2-3
Christmas Pageant	3-4
Vice-President	4
Streamliner Staff	4

*Russell
Messer*

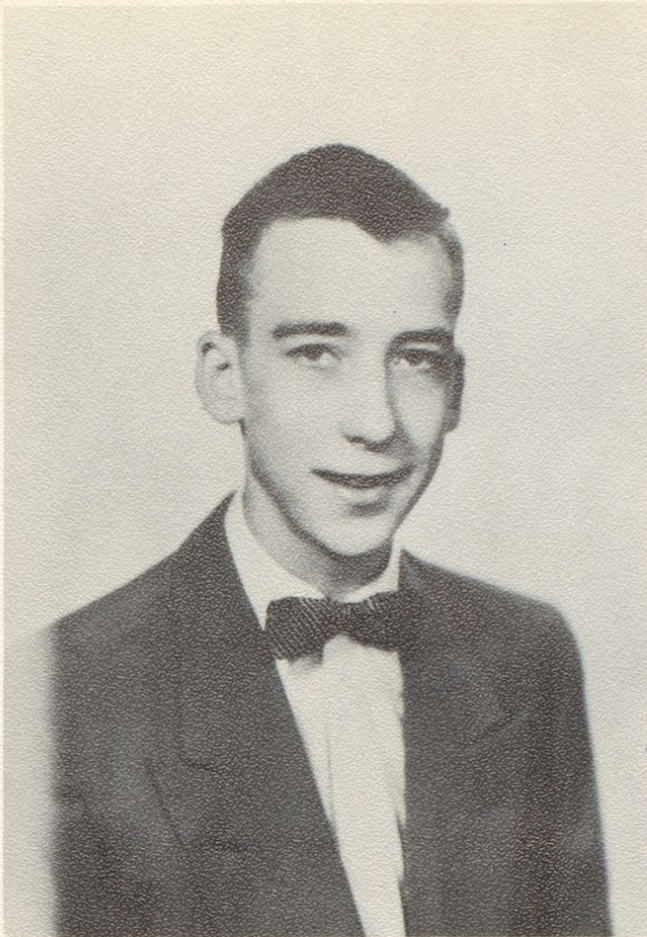


ROBERT LEE BURKHARDT

Football	4
Christmas Pageant	4
Senior Play	4
Glee Club	4
Conservation Club	2-3

Bobby

Seniors



ROGER TERRY DORAN

Band	2-3
Glee Club	2-4
Junior Conservation Club	1-4
Gossip Editor Streamliner Staff	4
Associate Editor Annual	4
Glee Club Operetta	4
Christmas Pageant	3-4
Cast Junior Play	3
Cast Senior Play	4
Second Prize Amateur Contest	1
Baseball	3
Third Place Solo Greenup County Fair	1

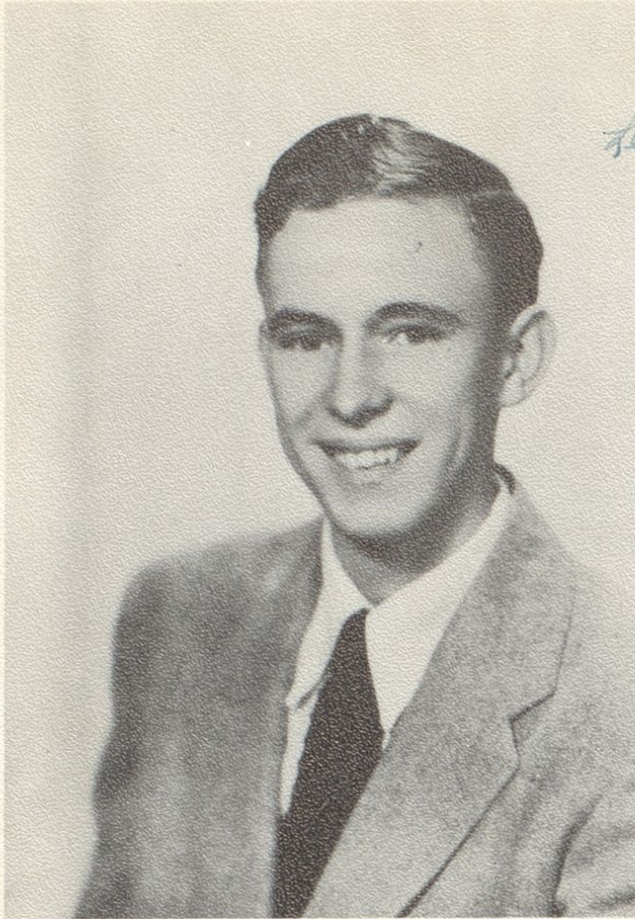
Roger Terry Doran



SHIRLEY LOUISE POTTER

Beta Club Convention	4
Vice-President Beta Club	3
Winner Greenup County Fair	1-2-3-4
Second Place Art Exhibit	3
Art Editor "Streamliner"	3-4
Art Editor "Tigers Den"	3-4
Senior Of Month	4
Candidate Basketball Queen	2
Secretary & Treasurer Class	1-2-3-4
Cast "Raggedy Nan"	3
Glee Club Operetta	2-4
Christmas Play	3-4
President Glee Club	4
Glee Club	2-3-4
Beta Club	3-4
4-H Club	1-3
Majorette	4
Poem Published in "These Are Our Best"	1

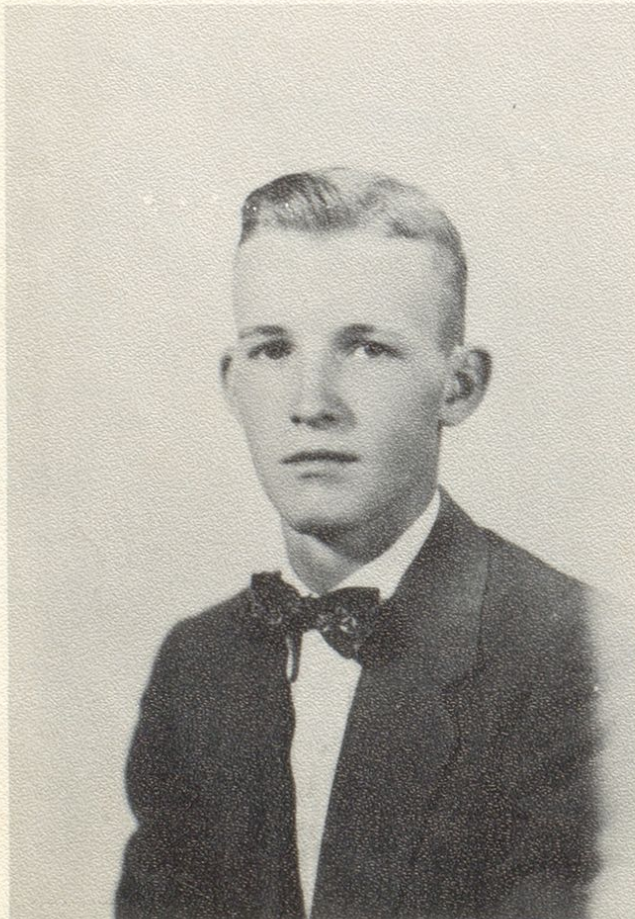
Shirley Louise Potter



Leroy Cremeans

LERoy CREMEANS

Glee Club	4
Glee Club Operetta	4
Cast Senior Play	4
Streamliner Staff	4
Christmas Play	3-4
Annual Staff	4
Baseball	3
Poems Published in "These Are Our Best"	1
Junior Conservation	1-2
Printer for Streamliner	4

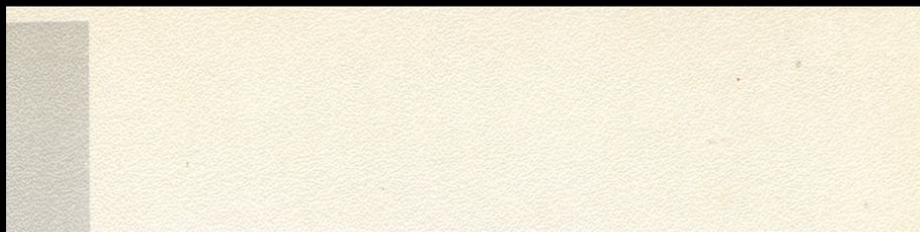


Ernest

ERNEST BONZO

Junior Conservation Club	2-3
Rifle Club	2
4-H Club	1-2-3
National Junior Vegetable Growers Association	1-2-3
Basketball	2-3-4

Seniors



MARY LOUISE SPARKS

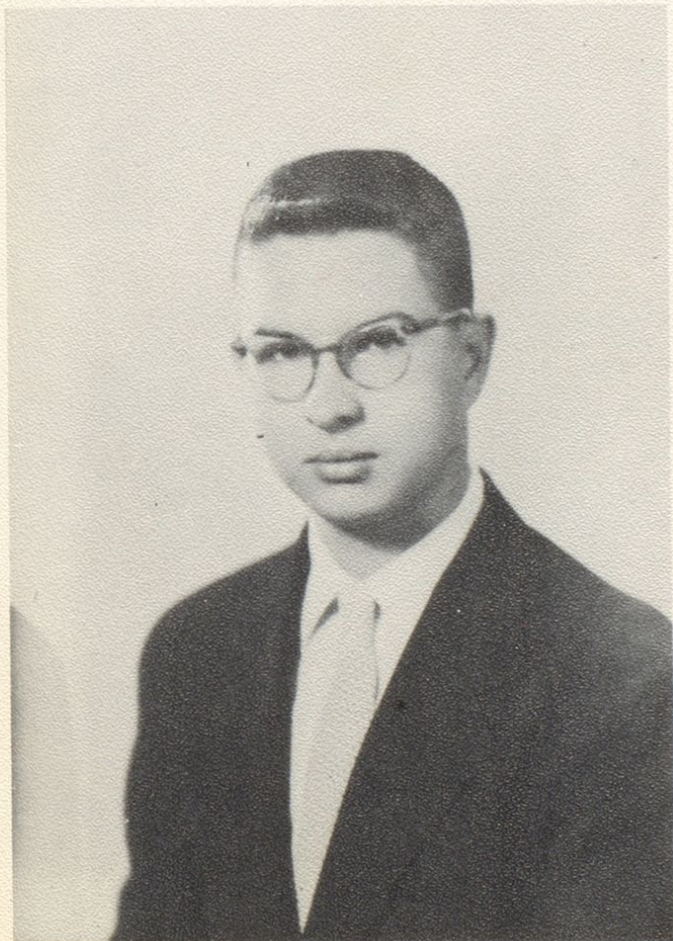
Cast "Gabriel Blow Your Horn"	4
Cast "Raggedy Nan"	3
Streamliner Staff	3-4
Annual Staff	4
Rifle Club	3
Glee Club	2-3-4
Christmas Pageant	3-4



Genie

GENIE CALES

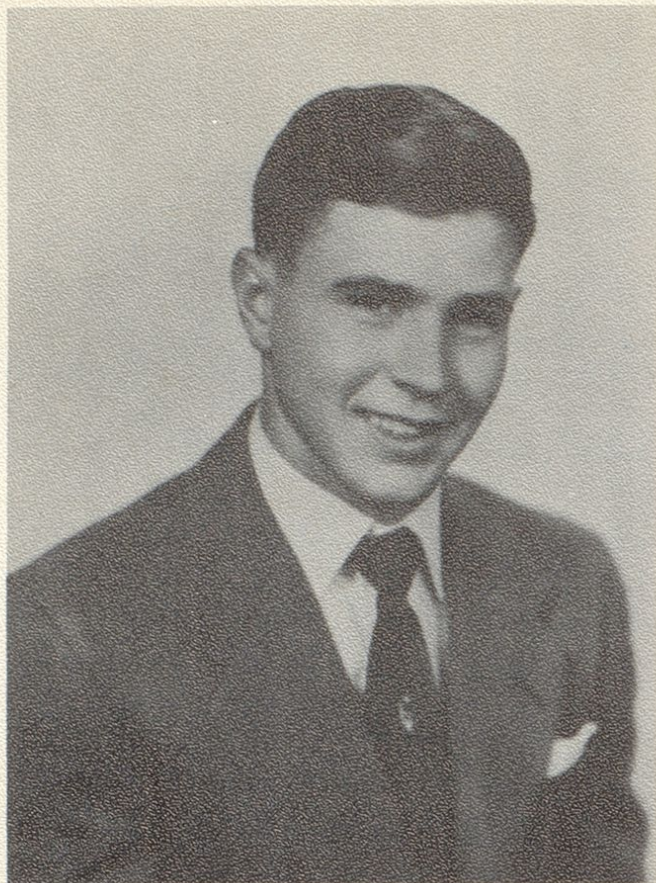
Cast "Gabriel Blow Your Horn"	4
Cast "Raggedy Nan"	3
Band Clinic, Morehead	1
Beta Club Convention	3-4
Most Beautiful Girl	2
Streamliner Staff	3-4
Annual Staff	3-4
Basketball Queen	3
Rifle Club	3
Glee Club	2-3-4
Beta Club	2-3-4
Majorette	4
D.A.R. Award	4
Christmas Pageant	3-4
4-H Club	3
Band	1-2-3



Robley

ROBERT EVERMAN

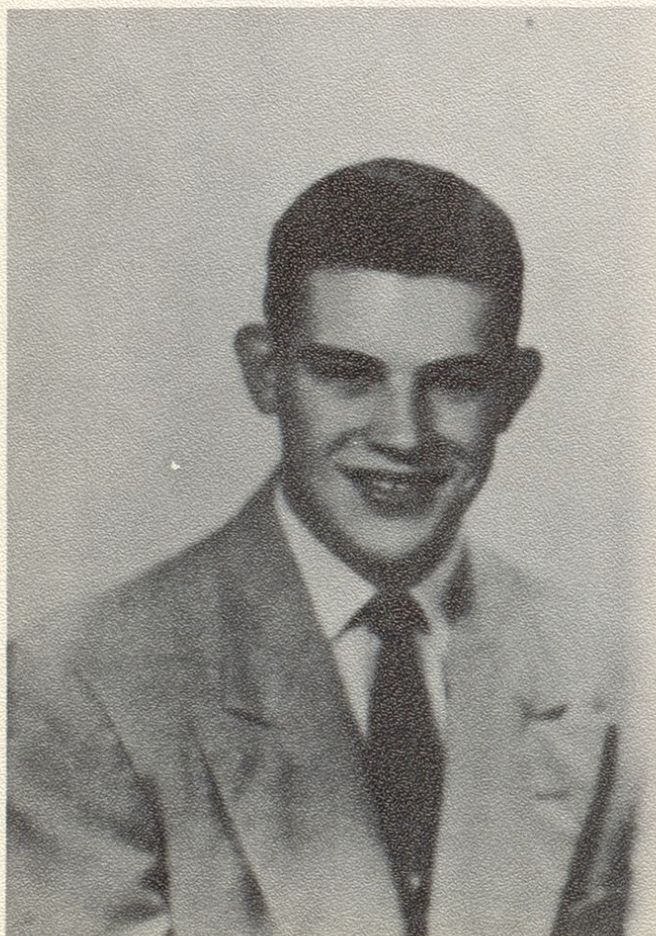
Beta Club	2-3-4
Vice-President Beta Club	4
Junior Conservation Club	2-3
Secretary Conservation Club	3
Editor "Streamliner"	4
Editor "Tiger Den"	4
Cast "Raggedy Nan"	3
Band	1
Cast "Gabriel Blow Your Horn"	4
Student of Month	4
"Streamliner Staff"	1-2-3



JAMES COFFEE

Rifle Club	3
Glee Club	4
Football	3
Baseball	3
Conservation Club	2-3
Cast "Gabriel Blow Your Horn"	4
Christmas Play	3-4
Glee Club Operetta	4
Junior Conservation Camp	2
Streamliner Staff	4
Tigers Den Staff	4

Jim Coffee



THOMAS EDWARD THOMAS

Band	1-2-4
Glee Club	4
Vice-President Glee Club	4
Football	2-3
Basketball Manager	4
Junior Class Play	3
Stage Manager Senior Class Play	4
Junior Conservation Club	1-3
Christmas Program	4
Official Timer, Basketball	4
Sports Editor, Streamliner	4

Tommy

Seniors

WADE WOMACK

Basketball	2-3-4
Conservation Club	1-2-3
Vice-President Conservation Club	3
Cast "Raggedy Nan"	3
Announcer of Senior Play	4
Christmas Program	3-4
Annual Staff	4
Vice-President of Junior Class	3
Senior of the Month	4
Conservation Camp	2
Assistant Editor Streamliner	4

Wade

Shirley

SHIRLEY ANN POTTER

Poems Published in "These Are Our Best"	1-2
Runner-Up Valentine Queen	4
Cast of "Gabriel Blow Your Horn"	4
Cast of "Raggedy Nan"	3
Beta Club Convention	3-4
Christmas Pageant	3-4
Streamliner Staff	3-4
Annual Staff	3-4
Cheerleader	1-2-3-4
Rifle Club	3
Beta Club	2-3-4
4-H Club	1
Glee Club	4
Band	1-2-3

To The Seniors:

It is said that adversity is the test of strong men. If this be true the Class of 1954 will be well tested. As you leave the protection of this school, and the sincere interest and guidance of the faculty, may the few things we have tried to teach you about being a worthwhile citizen in a democratic society be a stabilizing influence in your daily lives.

Long Ago

Who's Who in the Senior Class

Friendliest	James Archey-Cloah Hall
Most Critical	Maynard Womack-Shirley Potter
Best Disposition	Ernest Bonzo-Ruth Gambill
Most Versatile	Louise Potter-Terry Doran
Most Popular	James Archey-Genie Cales
Best Liked	Louise Potter-James Archey
Most Likely To Succeed	Bob Everman-Louise Potter
Most Beautiful	Genie Cales
Most Handsome	Russell Messer
Laziest	Bob Burkhardt-Mary Sparks
Biggest Bluff	Tom Thomas-Shirley Potter
Hardest Worker	Bob Everman-Cloah Hall
Noisiest	Bob Burkhardt-Mary Sparks
Teacher's Pet	Roger Johnson-Shirley Potter
Most Studious	Russell Messer-Shirley Potter
Best Sport	LeRoy Cremeans-Louise Potter
Neatest	Bob Burkhardt-Genie Cales
Best All-round Girl	Louise Potter
Grouch	Tom Thomas-Shirley Potter
Best All-round Boy	Wade Womack
Best Manners	Bob Everman-Louise Potter
Wittiest	Maynard Womack-Genie Cales
Biggest Baby	Roger Johnson-Mary Sparks



Junior Class Officers

Wayne Everman President

Wenonah BradfordSecretary-Treasurer

Donna CraftVice-President



DOVETTA STITH



BILL WILCOX



WENOAH BRADFORD



WAYNE EVERMAN

Juniors



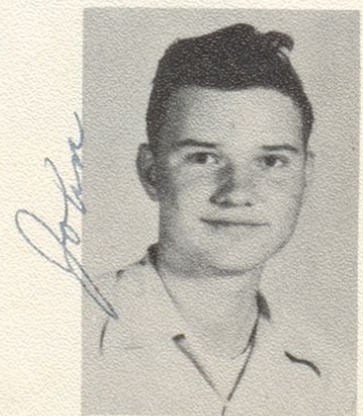
DONNA CRAFT



ALVIN BOYLES



BARBARA HURN



JOHN BENNETT

Gary



GARY ELDRIDGE

Joyce



JOYCE JOHNSON

Carl



CARL HALL

Dixie Lee



DIXIE LEE HERN

Nancy Rae

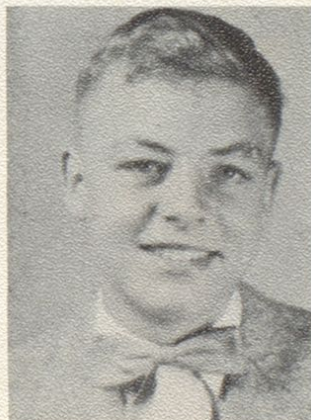


NANCY RAE BARKER

Juniors



CAROL MOORE



TERRY McBRAYER



RUBY JOHNSON



Sophomore Class Officers

Millard Hannah	Treasurer
David Applegate	President
Don Coffee	Vice-President
Lalo Bradford	Secretary

Sophomores



SILAS HICKS



ZOLA HICKS



ANNA VANHOSE



ROBERT GREEN



DAVID APPLGATE



SHIRLEY PERRINE



MARY STEWART



WAYNE BAYS



ROBERT DARBY



RICCA SNODDY



FRANCES DARNELL



JIM EARWOOD



BUDDY BANKS



THELMA BONZO



HELEN PENNINGTON



DON COFFEE



CHARON GILLIUM



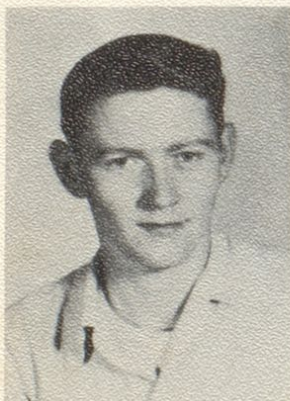
NAOMI QUILLEN



BONNIE FIRTH



LALO BRADFORD



MILLARD HANNAH



PHYLLIS WOMACK



MARTHA ANDERSON



CHARLES BOYLES



Freshman Class Officers

Walter Lykins	Vice-President
Nancy Darby	Secretary
Patty Phillips	Treasurer
Frankie Pickett	President



FRANKIE PICKETT



MARGARET KINNER



PHYLLIS CRAFT



RONALD HOWARD



CLYDE STIDHAM



MARY RUARK



MAXINE WEBB



RANDY COFFEE



ANN WATSON



WALTER LYKINS

Freshmen



ARNOLD QUILLEN

NANCY DARBY

GLEND A ONEY

CHARLES VEACH



Eighth Grade



BETTY EVERMAN



LINDA RICE



BONNIE LETTERAL



CAROLINE DOVER



JOYCE BROWN



BEVERLY SPURLOCK



ROBERT WOODARD



SHARON McBRAYER



JANICE SHELTON



BETTY LEE JOHNSON



BETTY J. JORDAN



PHYLLIS MILLER



BILLY RAY CREMEANS



GARY CALES



GENEVA FRALEY



BILLY LEE



ERNIE DAVIS



ROGER BERKLEY



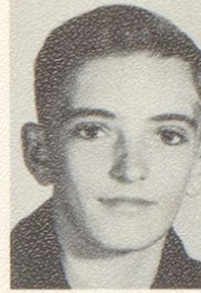
DON BONZO



KENNETH DARBY



JAMES JORDAN



DONALD ROWLAND



JERRY RIGGS



GENEVA LYON



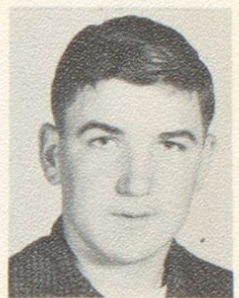
PAUL SAMMONS



ROY POTTER



P. A. WILLIAMS



BRUCE ABRAMS



GENE MILLER



BILLY LOGAN



B. R. DORAN



DON PEMBERTON



SARAH SHEPHERD



TOMMY APPLGATE



JANICE HERN



JAMES MURRAY



JUDY McBRAYER



MAUDIE HARRIS

Seventh Grade



CAROLYN SUE SNODDY



RUSSELL CALES



JOHN L. PORTER



KAY BRADEN



CAROL JEAN SHERMAN



Bobbie Sue
BOBBIE SUE CALLIHAN



BETTY MARTIN



WAYNE LEE



PAUL QUILLEN



JOHN FLEMING



BONNIE TAYLOR



GERALDINE HALL



NITA PHILLIPS



BETTY LEE MARTIN



JERALENE STEWART



JANICE BOWLING



JOHN BURTON



SHIRLEY SIZEMORE



JAMES GARTHEE



JIMMY FRITZ



JIMMY HERN



BOBBY BRADFORD



WAYNE STEPHENSON



BONNIE ANDERSON



ROY FLOYD



VIOLET HALL



BENNY O'BRYAN



BONNIE NELSON



Donna

DONNA ELDRIDGE



ETHEL DARNELL



Linda

LINDA CRAFT



Mary Alice

MARY A. BAILEY



JANICE JUSTICE



LOIS HILTON



PHYLLIS THOMPSON



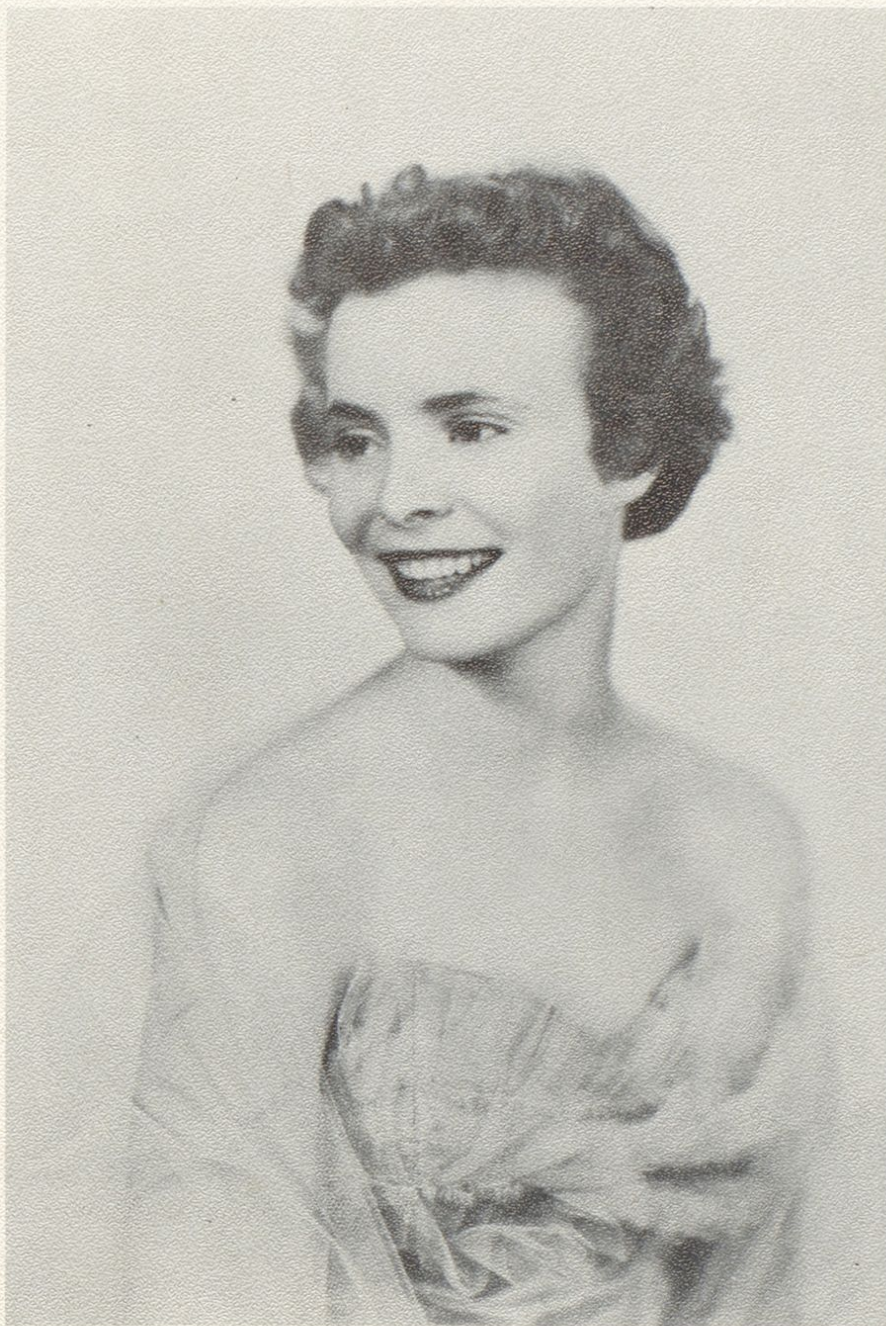
SUE DILLOW

D. A. R. Award



This good citizenship award was presented to Genie Cales by the Poage Chapter of the D. A. R. on the basis of dependability, truthfulness, honesty, punctuality, service, cooperation, helpfulness, responsibility, leadership, personality, self-control, initiative, patriotism, unselfish loyalty to American ideals.

Most Beautiful Girl



JOYCE JOHNSON



Basketball Queen

BEVERLY SPURLOCK

WAYNE EVERMAN



We Had Our Pictures Made.

The STREAMLINER

"A STREAMLINED PAPER FOR A STREAMLINED SCHOOL"



First Row:

Editor Bob Everman
Gossip Editor Roger Johnson
Gossip Editor Terry Doran
Feature Editor Happy Sparks
Our Alma Mater Bonnie Firth

Second Row:

Student of the Month Cloah Hall
Grade School Reporter . . . Shirley Perrine
Society Editor Genie Cales
Business Manager Shirley Potter
Columnists Thelma Bonzo
Sophomore Reporter . . . Ricca Snoddy

Third Row:

Office Reporter James Coffee
Art Editor Louise Potter
Assistant Editor Wade Womack
Class Lowdown Donna Craft
Treasurer Terry McBrayer
Who's Who in G.H.S. Russell Messer

Beta Club

The purpose of the National Beta Club: to promote the ideals of honesty, service and leadership among the high-school students of America, to award meritorious achievement, and to encourage and assist students to continue their education after high-school graduation. In order to become a Beta Club member a student must have a "B" standing.



OFFICERS

Terry McBrayer President
 Bob Everman Vice-President
 Shirley Potter . . . Secretary-Treasurer



MEMBERS

Louise Potter	Joyce Johnson
Thelma Bonzo	Shirley Perrine
Dixie Hern	Naomi Quillen
Nancy Barker	Lalo Bradford
Genie Cales	Wenonah Bradford

BETA MOTTO

Ducamus aliis serviendo (Let us lead by serving others).



WALSORTH

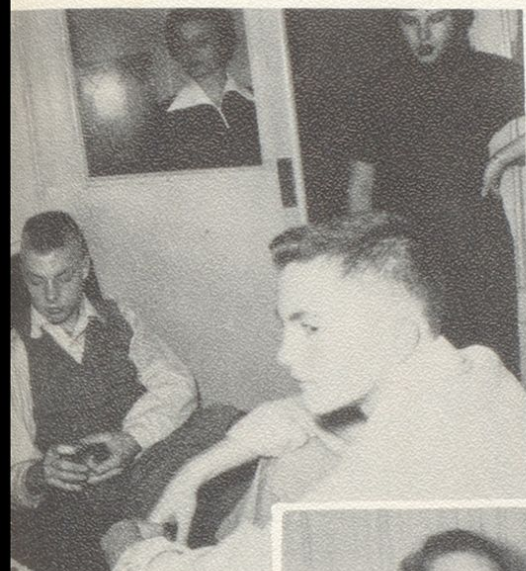
Lithographed & Bound by
 WALSORTH BROTHERS
 Marceline, Mo., U. S. A.



HOTEL



JUST ARRIVED



ON THE TRAIN



ALL DRESSED UP



WHERE IS THE TABLE?



BETA CLUB CONVENTION



AFTER MIDNIGHT

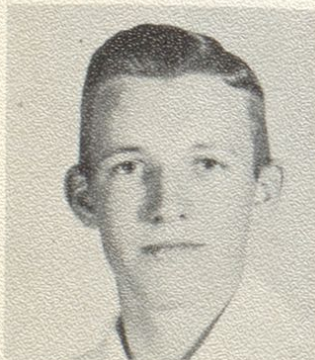
4-H Club Officers

Shirley Perrine Song Leader
 Joyce Johnson Secretary-Treasurer
 Wenonah Bradford President
 Nancy Barker Vice-President

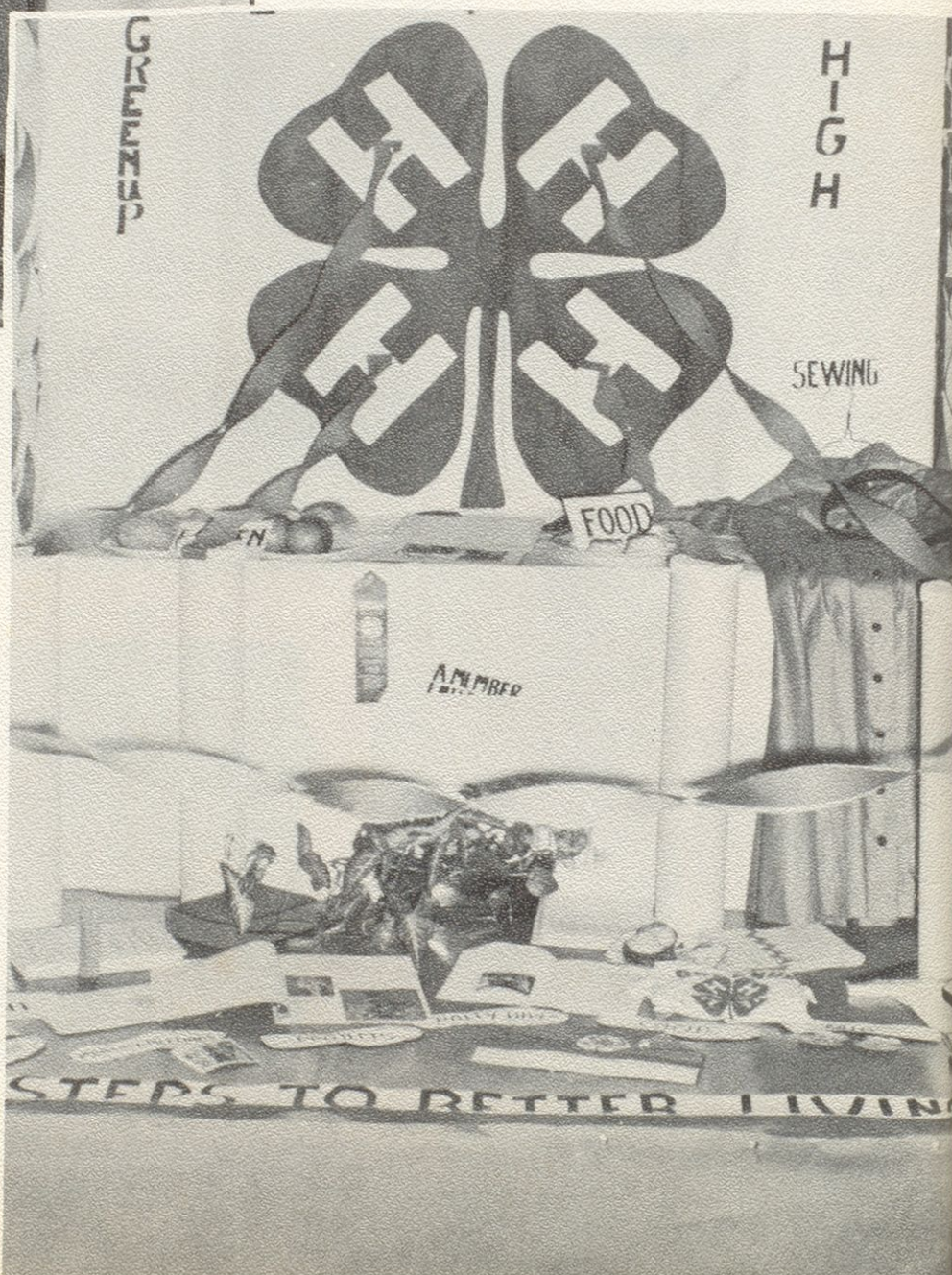
Greenup High School Club received the prize from
 Kentucky and West Virginia Power Company for the
 best club in the county for 1953.



THELMA BONZO
 Winner of Foods Judging Contest at Spring
 Rally 1953.
 Attended 4-H week at Lexington



ERNEST BONZO
 Greenup County Individual Demonstration
 Winner 1953.
 Second Place in District Rally at Morehead
 Attended 4-H Week at Lexington.



4-H Club



FIRST ROW: Mary Stewart, Patty Phillips, Nancy Darby, Shirley Perrine, Joyce Johnson, Wenonah Bradford, Nancy Barker, Carol Moore, Ruby Johnson, Margaret Kinner.

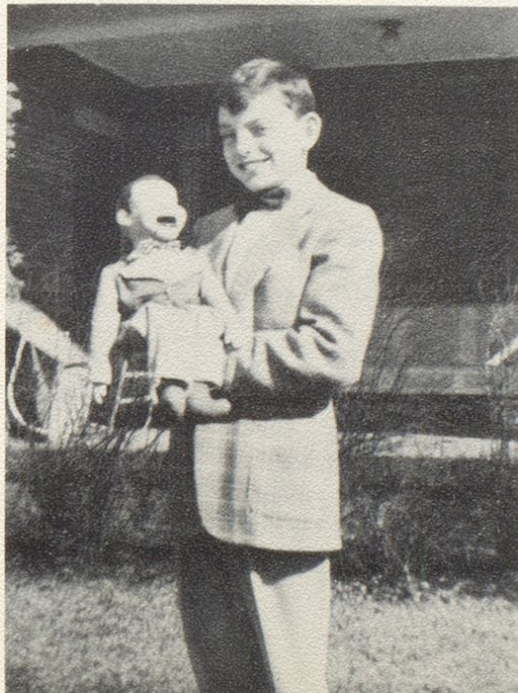
SECOND ROW: Jeralene Stewart, Elane Nichols, Bonnie Nelson, Ethel Darnell, Carol Sherman, Mary A. Bailey, Kay Braden, Bobbie Sue Callihan, Lois Hilton.

THIRD ROW: Sarah Shepherd, Janice Justice, Phyllis Womack, Janice Hern, Nita Phillips, Bonnie Anderson, Bonnie Taylor, Betty Martin, Thelma Bonzo, Janice Bowling, Beverly Spurlock, Glenda Oney.

FOURTH ROW: Dixie Hern, Shirley Sizemore, Betty Everman, Phyllis Miller, Caroline Dover, Judy McBrayer, Maxine Webb, Naomi Quillen, Helen Pennington, Phyllis Craft, Sue Dillow.



WENONAH BRADFORD
President Of 4-H
Junior Leader In Foods Projects
County Winner In Foods For 1953



P. A. WILLIAMS III
Winner Amateur Contest



LARRY ARCHEY
Spelling Champion
First In Greenup Independent
School
Second Place In The Country
Went to Huntington



Seniors Present Play Friday At Greenup

GREENUP—A delightful comedy titled "Gabriel, Blow Your Horn" was presented Friday night at the graded school auditorium here by the members of the Greenup High School Senior Class.

Each member of the cast gave a splendid performance in their respective role.

The cast was directed by Mrs. Ann Sammons, a member of the high school faculty and sponsor of the Senior Class.

Members in the cast included: Terry Doran, Genie Cales, Linda Craft, Clone Hall, Mary Sparks, Shirley Perrine.

Shirley Potter, Robert Everman, Bobby Burkhardt, Leroy Cremeans, James Archey and James Coffee.

